



HaloCAD

HaloCAD Add-on for AutoCAD

Installation Manual

Version 2.3

Copyright

© 2024-2025 Secude Solutions AG. All Rights Reserved.

This Secude-branded software and its corresponding documentation are the exclusive property of Secude Solutions AG of Luzern, Switzerland and are protected under the various copyright laws around the world and by various other intellectual property laws. The use of this software and/or its documentation and any copying thereof by end users is subject to the terms of a license agreement with Secude Solutions AG. The wrongful use or copying of this software and/or documentation subjects infringers to both criminal and civil liabilities.

ANY USE, COPYING, REPRODUCTION, ALTERATION, TRANSMISSION, OR TRANSLATION OF THESE MATERIALS, IN WHOLE OR IN PART, IN ANY FORM OR BY ANY MEANS, IS STRICTLY PROHIBITED WITHOUT THE PRIOR WRITTEN PERMISSION OF SECUDE SOLUTIONS AG. IF THIS MATERIAL IS PROVIDED WITH SOFTWARE LICENSED BY SECUDE, THE INFORMATION HEREIN IS PROVIDED SUBJECT TO THE TERMS OF THE WARRANTY PROVIDED WITH THE PRODUCT LICENSE. IF THIS MATERIAL IS NOT PROVIDED WITH LICENSED SOFTWARE, THE INFORMATION HEREIN IS PROVIDED "AS IS" WITHOUT WARRANTY OF ANY KIND. IN EITHER CASE, THERE ARE NO OTHER WARRANTIES, EITHER EXPRESS OR IMPLIED, INCLUDING, BUT NOT LIMITED TO THE IMPLIED WARRANTIES OF MERCHANTABILITY, FITNESS FOR A PARTICULAR PURPOSE, NONINFRINGEMENT, OR QUALITY. IN NO EVENT SHALL SECUDE SOLUTIONS AG OR ANY OF ITS AFFILIATES BE LIABLE FOR ANY DIRECT OR INDIRECT, SPECIAL, INCIDENTAL, CONSEQUENTIAL, PUNITIVE, OR EXEMPLARY DAMAGES ARISING OUT OF THE USE OR INABILITY TO USE THE MATERIALS AND/OR INFORMATION CONTAINED HEREIN. Some jurisdictions do not allow the exclusion of implied warranties, so the above exclusion may not apply to you.

Secude Solutions AG takes reasonable measures to ensure the quality of the data and other information produced herein. However, these materials may contain technical inaccuracies or typographical errors, and are not guaranteed to be error-free. Information may be changed or updated without notice. Secude Solutions AG has no obligation to update these materials based on changes to its products or services or those of third parties. Secude Solutions AG may also make improvements or changes to the products or services described in this information at any time without notice. Secude Solutions AG frequently releases new versions and updates to its software, and therefore images shown in this document may be slightly different from what you see on screen.

As with any security product, Secude Solutions AG highly recommends the back up of data as well as passwords on a regular basis. Secude Solutions AG is not responsible for the loss of passwords or data that cannot be retrieved based upon a user's failure to adhere to stringent backup and safe-keeping conventions.

Contact

Secude Solutions AG
Landenbergstrasse 34
6005 Luzern
Switzerland
Tel: +41 41 510 70 70
Mail: info@secude.com

Support

Web: <https://support.secude.com>
Mail: support@secude.com

Table of Contents

1. ABOUT THIS MANUAL.....	1
2. INSTALLING THE HALOCAD ADD-ON FOR AUTOCAD	2
2.1. Step 1: Fulfill the Prerequisites	2
2.2. Step 2: Obtain the License Key	2
2.3. Step 3: Create an Encrypted JSON File	2
2.4. Step 4: Install the Add-on	2
2.4.1. Graphical Mode.....	3
2.4.2. Silent Mode.....	11
2.4.3. Via System Center Configuration Manager	12
2.5. Step 5: Modify Registry Settings.....	13
3. INSTALLING THE HALOCAD READER ADD-ON FOR AUTOCAD	16
4. APPENDIX	18
4.1. Uninstalling the HaloCAD Add-on for AutoCAD	18
4.2. Uninstalling the HaloCAD Reader Add-on for AutoCAD	21

Typographic Conventions

This guide uses the following typographic conventions to distinguish types of in-text information and icons to alert you to important information.

Convention	Description
Boldface type	<ul style="list-style-type: none">• Items you must select, such as menu options, command buttons, or items in a list.• Titles of sections, sub-sections, etc.
<i>Italic type</i>	<ul style="list-style-type: none">• To emphasize a word• Error messages• Table and Figure captions
Consolas Font	<ul style="list-style-type: none">• Package names• Filenames and directory names• XML element names and attribute names• Parameters• File type• Code examples <p>Example:</p> <pre>hesadm.exe start -user <domain\user> -pwd <password></pre>
Hyperlink	Provides quick and easy access to cross-referenced topics. Hyperlinks are highlighted in blue and underlined.
Admonitions	<div data-bbox="416 1171 1394 1279" style="border: 1px solid yellow; padding: 5px;"><p>Note Provides additional information relevant to the topic.</p></div> <div data-bbox="416 1335 1394 1518" style="border: 1px solid red; padding: 5px;"><p>Warning Contains information about circumstances, parameters, and so on that MUST be fulfilled. Failure to comply will have consequences for the current operation.</p></div> <div data-bbox="416 1574 1394 1682" style="border: 1px solid green; padding: 5px;"><p>Tip Contains useful information about the operation of the application.</p></div> <div data-bbox="416 1738 1394 1883" style="border: 1px solid blue; padding: 5px;"><p>Info Contains information, guidelines, or suggestions for performing tasks more effectively.</p></div>

1. About this Manual

This manual walks you through the process of installing and configuring the following HaloCAD add-ons:

1. HaloCAD Add-on for AutoCAD
2. HaloCAD Reader Add-on for AutoCAD

Reference

All technical manuals are included with the product package you have purchased.

Administrators should first read the Technical Reference Manual to understand the add-on's architecture, learn about the prerequisites, and activate a license key. They should also refer to the Release Notes to learn about the supported CAD applications before following the instructions in this document.

2. Installing the HaloCAD Add-on for AutoCAD

This chapter describes how to install and configure the HaloCAD Add-on for AutoCAD. This manual just briefly explains steps 1-3, which cover the prerequisites, obtaining the licensing key, and creating an encrypted JSON file; for more information, please refer to the Technical Reference manual.

2.1. Step 1: Fulfill the Prerequisites

1. To learn more about supported operating systems, file types, and CAD applications, please refer to the Release Notes.
2. Before installing the add-on, it is recommended that you fulfill the prerequisites.

2.2. Step 2: Obtain the License Key

Obtain the license key and decide whether to activate it automatically or manually.

2.3. Step 3: Create an Encrypted JSON File

For a secure installation create an encrypted JSON file using this admin tool and share it with internal/external parties without disclosing the original tenant details. When the encrypted JSON file is ready, place it with the HaloCAD installer. By reading data from the `hc.conf.enc` file, the installer activates the license and bypasses the "[Initialization](#)" screen, which would otherwise ask for Azure credentials.

2.4. Step 4: Install the Add-on

You can install the add-on in the following modes:

1. Graphical Mode

Graphical mode installation is an interactive, graphical user interface-based method that is driven by a wizard.

2. Silent Mode

Silent-mode installation is a non-interactive method of installing the add-on using command lines.

3. Via System Center Configuration Manager

With System Center Configuration Manager (SCCM), the add-on is deployed on the targeted computers across your enterprise.

2.4.1. Graphical Mode

Before you begin

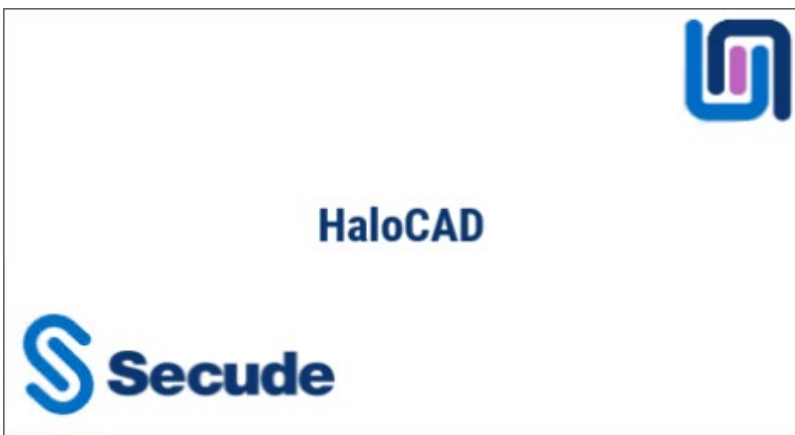
The following prerequisites must be met:

1. A user who installs the HaloCAD Add-on must have administrator rights.
2. You must close all the CAD applications. If not, HaloCAD prompts a warning message as *"Please close all the CAD applications to proceed with the installation of HaloCAD Add-on for AutoCAD."*
Therefore, we recommend closing all the applications and then start installing the HaloCAD Add-on.
3. Make sure that the HaloCAD Reader Add-on for AutoCAD is not installed on the same workstation. If it is already installed, HaloCAD prompts a warning message as *"No supported CAD applications are available in the system. (OR) Remove the Reader version of this product."*
4. Make sure your Microsoft Entra tenant information is ready to enter when the setup process prompts for a manual installation. Alternatively, for a safe and automatic installation, use `hc.conf.enc`.

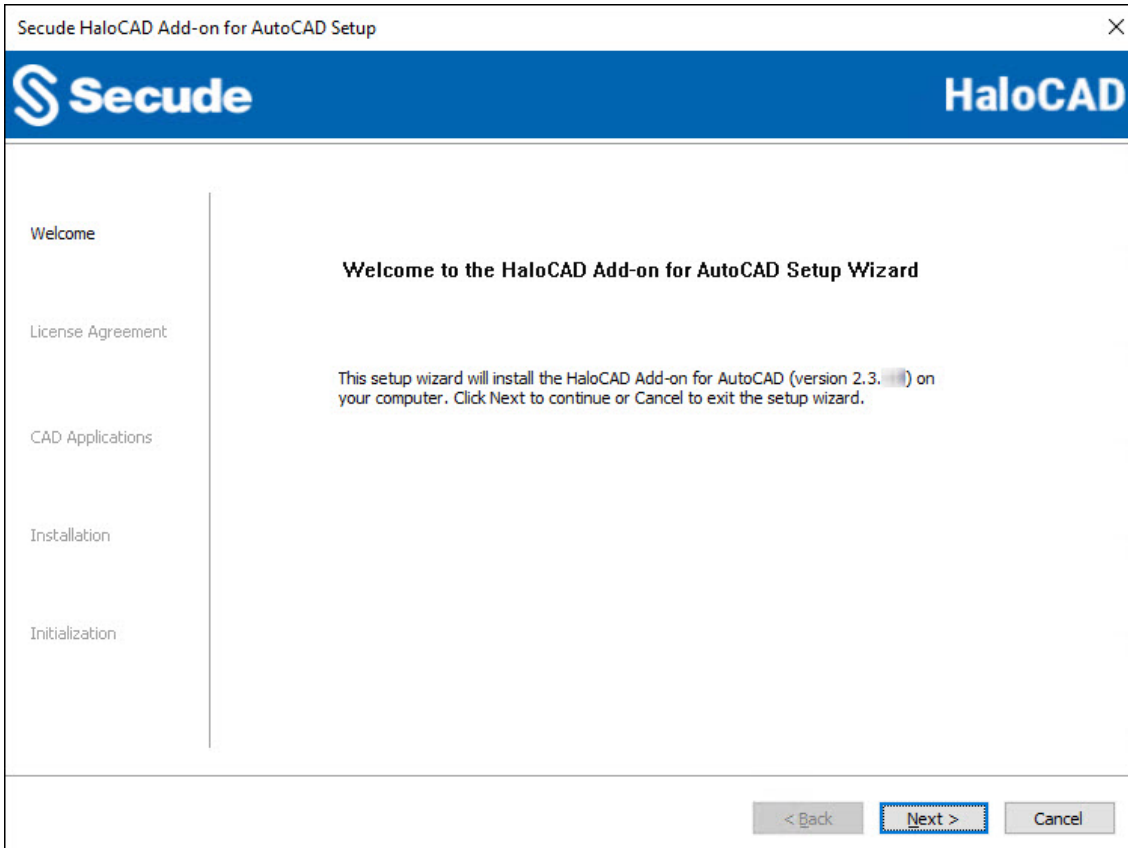
Installation Procedure

Install the add-on using the GUI-based setup program provided in the installation package.

1. To begin the interactive installation, double-click the installer `Ha1oCAD_AutoCAD_Setup.exe` file.
Depending on your Windows security settings, you may get a warning such as *"Do you want to allow the following program to make changes to this computer?"*. If you get this security warning, click the **Yes** button to continue the installation.
2. When the installer starts, the **Startup** dialog appears, followed by the **Welcome** dialog.

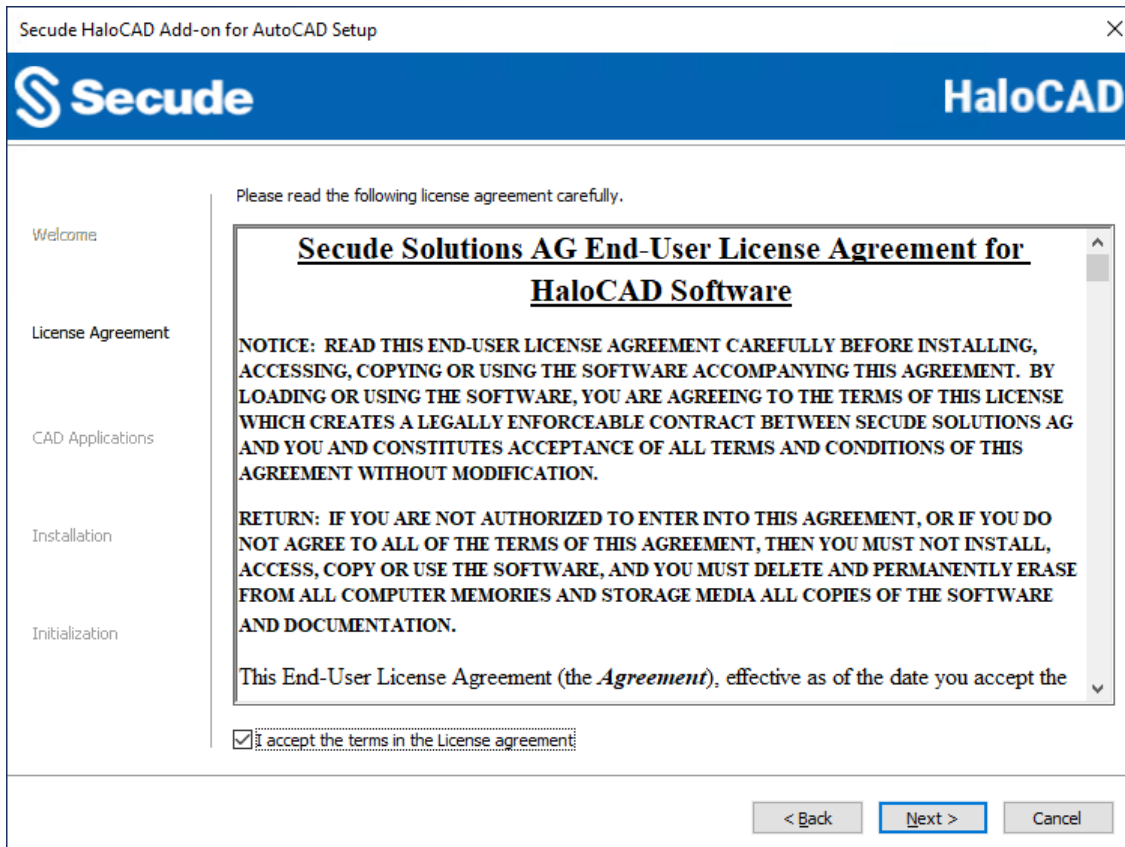


Startup dialog



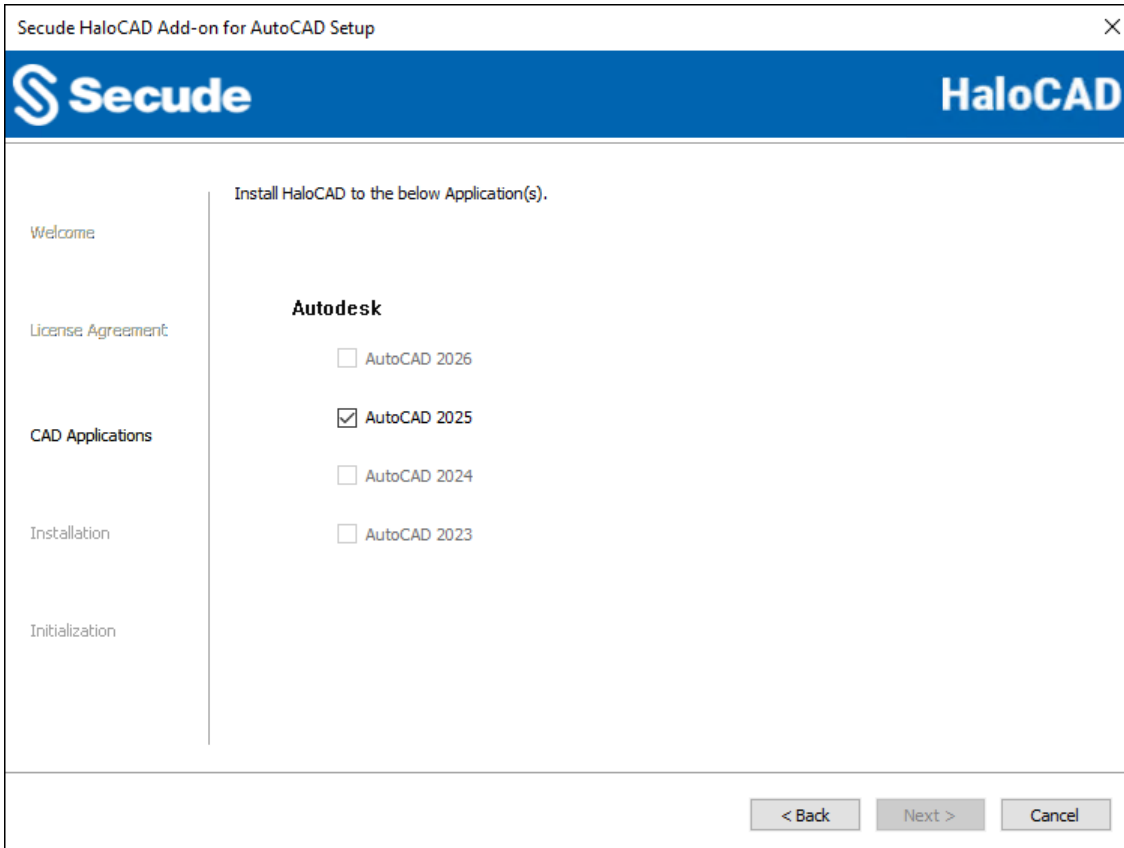
Welcome dialog

3. Click **Next** to continue the installation.
4. The **End-User License Agreement (EULA)** dialog appears.



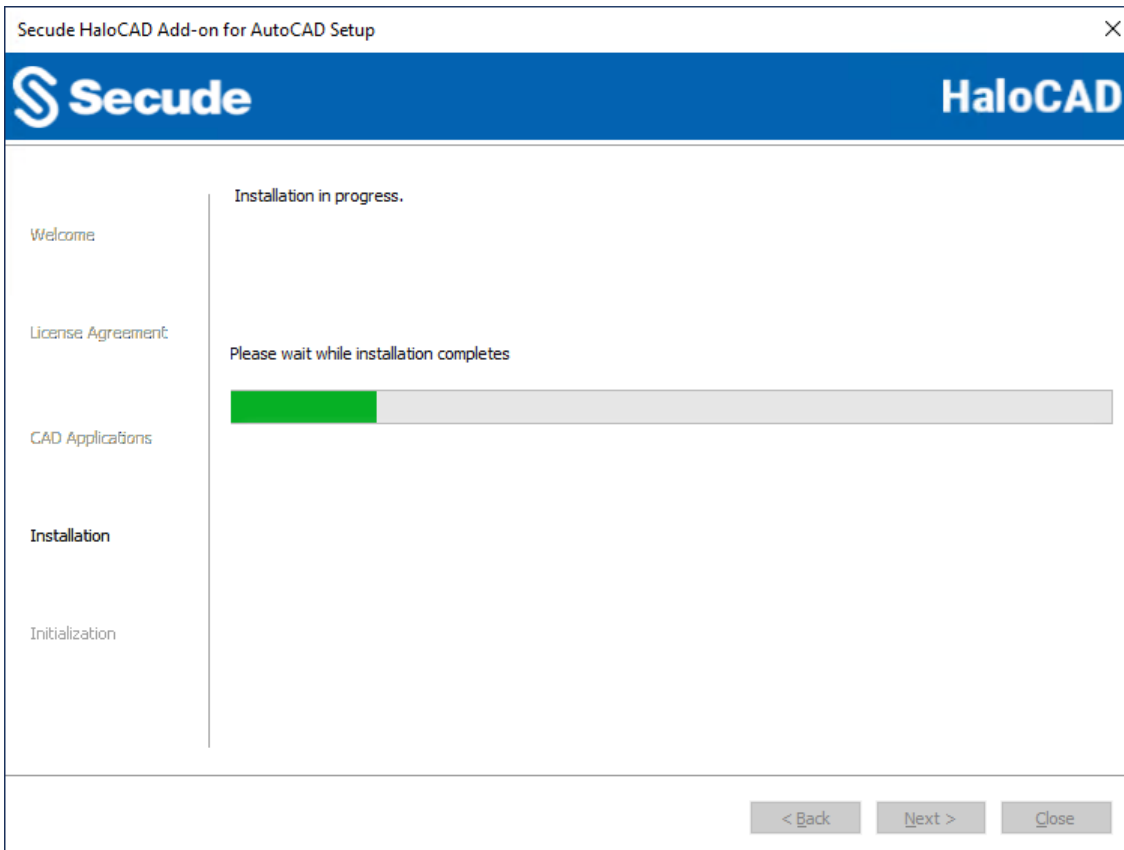
End-User License Agreement dialog

5. Read the **End-User License Agreement**. If you agree, select **I accept the terms in the License Agreement**, and click **Next** to continue.
6. The CAD application version selection dialog appears.



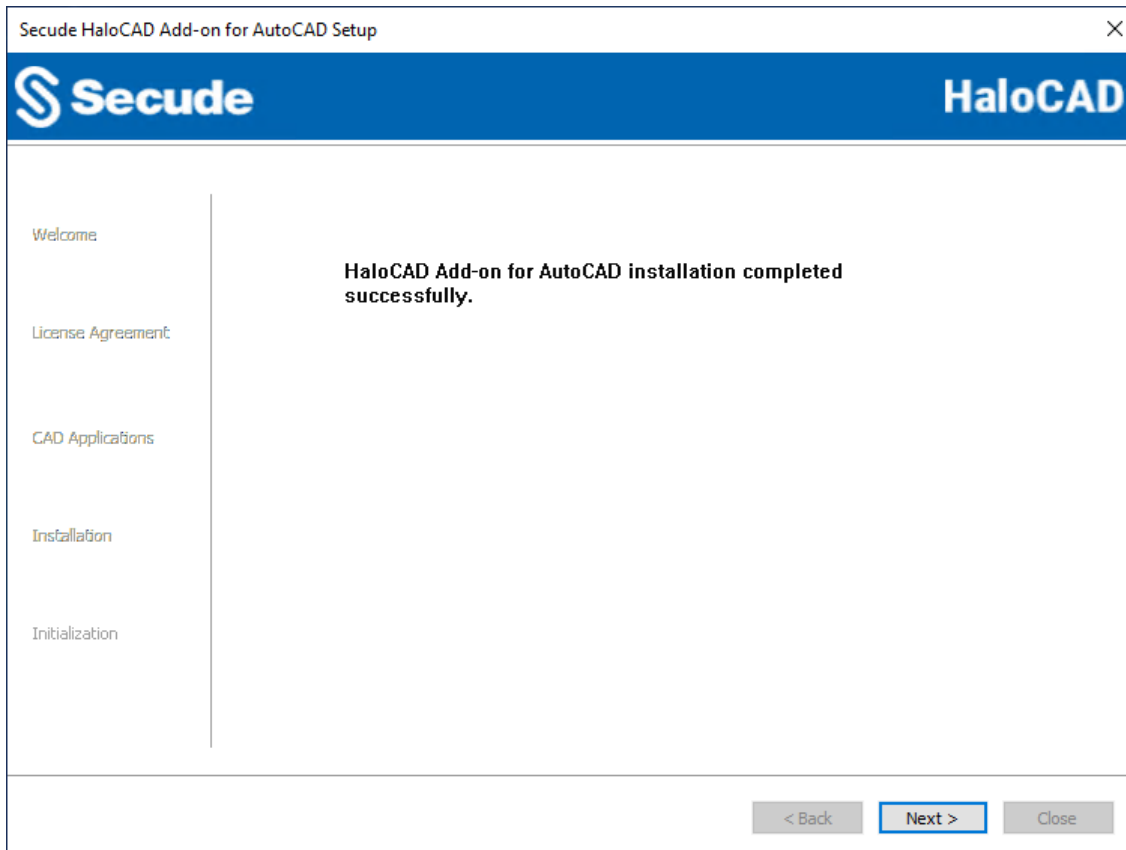
CAD application version selection dialog

- a. Select the installed **AutoCAD** application version in your system.
 - b. Click **Next**. To review or modify installation settings (if needed), click **Back** to return to the previous screens.
7. The installation begins, and the progress is displayed in the dialog.



Installation progress dialog

8. When the installation is complete, a message appears confirming that the add-on has been successfully installed.



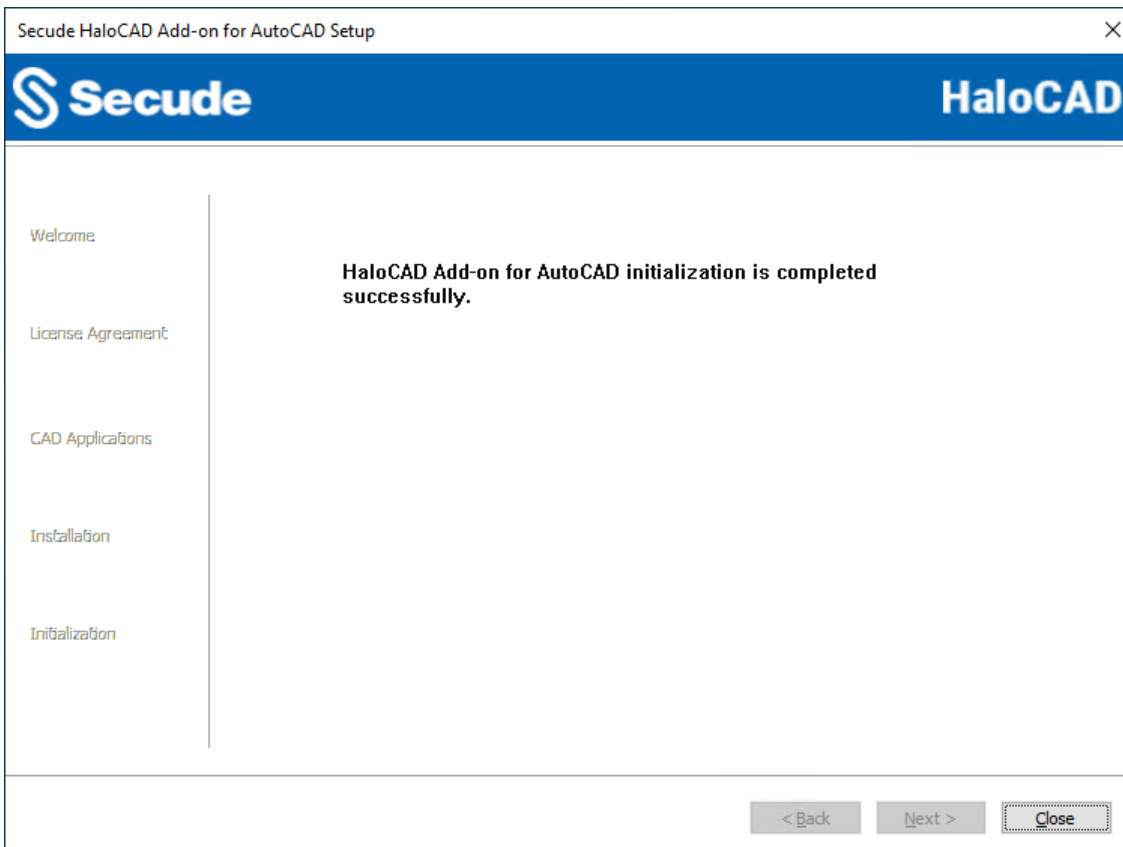
Installation completed dialog

9. Click **Next** to proceed.
10. The initialization dialog appears. To avoid connectivity issues, ensure that you enter the correct Azure application registration information in the screen below. Note: If you have included the `hc.conf.enc` file with the installer, the following initialization screen will not appear, and you will just see the completion dialog. The initialization screen appears only if the `hc.conf.enc` file is not included in the installer folder.

Initialization dialog

- a. **Application ID:** Enter the unique identifier of your registered application. For example, v6ca776-c74e-437d-98ef-662ecb5751tt
- b. **Redirect URI:** Enter the URI that was provided when registering the native application in the Azure portal. For example, https://localhost.
- c. **Tenant ID:** If the registered application is **Single tenant**, you need to enter the globally unique identifier of your tenant if not, you can leave it empty. For example, 9c1cfc28-1ec6-44ea-bec6-e3492ef0cd16
- d. **Cloud Type:** By default, Commercial will be set. However, based on your Azure subscription and configuration, you can change the cloud type from the list – Commercial / Custom / Germany / US_DoD / US_GCC / US_GCC_High / US_Sec / US_Nat / China_01. In the case of **Custom** cloud type, you need to enter the appropriate URLs in **Protection Cloud URL** (for example, https://api.aadrm.com) and **Policy Cloud URL** (for example, https://dataservice.protection.outlook.com).

- e. **Enable Federal Information Processing Standards (FIPS):** Enable this option to use encryption algorithms that comply with FIPS standards. When enabled, MPIP uses only FIPS-compliant encryption algorithms, and when disabled, it uses standard encryption algorithms. If this option was not enabled during installation, it can later be enabled through a registry entry. For more details, please refer to the section "[Step 5 Modify Registry Settings](#)".
 - f. Click **Next**.
11. Once the initialization is complete, a success message appears as shown below.



Initialization completed dialog

12. Click **Close** to close the installation wizard.

Post-installation checks:

- 1. To view the add-on, open the **AutoCAD Application > HaloCAD** tab.
- 2. By default, asterisks are used in MIP SDK logs to mask Personally Identifiable Information (PII), such as Email names and IP addresses. The MIP SDK logs are available at %AppData%\Roaming\Secude\HaloCAD\acad\mip\logs\mip_sdk.miplog. To read this data in clear text, you must manually create a registry entry in the root directory:
Computer\HKEY_CURRENT_USER\SOFTWARE\Secude\HaloCAD Add-on for AutoCAD
Name: mipallowpii, **Type:** REG_SZ, **Value:** true

3. You can now configure log-related settings in the Registry Root Directory =
HKEY_CURRENT_USER\SOFTWARE\Secude\HaloCAD Add-on for AutoCAD. For more details, please refer to the section "[Step 5 Modify Registry Settings](#)". The HaloCAD logs are available at %AppData%\Roaming\Secude\HaloCAD\acad\halocad.log
4. If your network infrastructure includes a proxy server that provides access to external websites. Then, to connect to the Secude License Manager URL, you need to manually add the Proxy settings in the add-on. To do so, create a registry entry in the root directory,
Computer\HKEY_LOCAL_MACHINE\SOFTWARE\Secude\HaloCAD Add-on for AutoCAD
Name: proxyuri, **Type:** REG_SZ, **Value:** The format is, <URL>:<PORT>. For example,
http://10.41.0.130:808

2.4.2. Silent Mode

Besides graphical mode, the add-on can be installed in silent mode, which does not require user involvement or display a user interface. It is a convenient way to streamline installation using the command at once.

1. Open the Command Prompt with elevated rights (Run as Administrator).
2. Navigate to the add-on installer directory.
3. To know the list of options available in silent mode, follow the steps given below:

Type HaloCAD_AutoCAD_Setup.exe -help

Press Enter

Output

...

```
HaloCAD_AutoCAD_Setup.exe -help
```

```
HaloCAD_AutoCAD_Setup.exe -install -application <AutoCAD 2026 |AutoCAD 2025 |AutoCAD 2024 |AutoCAD 2023> -applicationid <azure_application_id> -redirecturi <azure_redirect_url> -tenantid <azure_tenant_id for Single-tenant app|null for Multi-tenant app> [-cloudtype <Commercial|Custom|Germany|US_DoD|US_GCC|US_GCC_High|US_Sec|US_Nat|China> <protectioncloudurl> <policycloudurl>] -enablefipsmode <true|false>
```

```
HaloCAD_AutoCAD_Setup.exe -uninstall
```

To delete HaloCAD cache through Silent Mode Uninstallation

```
HaloCAD_AutoCAD_Setup.exe -uninstall -clearcache <yes>
```

For Silent Mode Installation if ENC file already exists in the same location

```
HaloCAD_AutoCAD_Setup.exe -install -application <AutoCAD 2026 |AutoCAD 2025 |AutoCAD 2024 |AutoCAD 2023> -enablefipsmode <true|false>
```

4. The following command illustrates how to install the add-on using the Azure application details.

```
HaloCAD_AutoCAD_Setup.exe -install -application "AutoCAD 2025" -applicationid  
v6ca776-c74e-437d-98ef-662ecb5751tt -redirecturi https://localhost -tenantid  
9c1cfc28-1ec6-44ea-bec6-e3492ef0cd16 -cloudtype Custom https://api.aadrm.com  
https://dataservice.protection.outlook.com -enablefipsmode true
```

5. The example below shows how to install the add-on using the `hc.conf.enc` file located in the same installation location.

```
HaloCAD_AutoCAD_Setup.exe -install -application "AutoCAD 2025" -enablefipsmode true
```

6. Press Enter.

7. The installation is complete.

2.4.3. Via System Center Configuration Manager

The **Microsoft System Center Configuration Manager (SCCM)** is an administration tool that enables organizations to deploy operating systems and applications to Windows users quickly and cost-effectively within their environment.

Using SCCM, the HaloCAD add-on can be installed silently and automatically on specifically targeted computers across the enterprise.

Before you begin

1. Make sure that you have read the prerequisites given in the section "[Graphical Mode](#)".
2. We recommend familiarizing the best practices for creating a deployment procedure.
3. For information about preparing your environment, please refer to the online Microsoft documentation.

Follow the steps below to deploy using SCCM:

1. This guide assumes that you have already set up a SCCM environment.
2. Use the silent mode commands mentioned in the section "[Silent Mode](#)" when needed.

2.5. Step 5: Modify Registry Settings

Prerequisite: To modify the add-on registry entries, first launch the CAD application and log in to Azure RMS for an active HaloCAD session. For more information, please refer to the Operations Manual.

Note: Only the registry entries listed in the table below should be modified.

The HaloCAD registry entries are grouped into two sections: **HKEY_CURRENT_USER** and **HKEY_LOCAL_MACHINE**. Depending on your requirements, you can modify the following settings:

1. HKEY_CURRENT_USER\SOFTWARE\Secude\HaloCAD Add-on for AutoCAD. Once you have logged into the HaloCAD Session, open Registry Editor, navigate to this path, and modify the desired registry key. For example, to change the log level, double-click **loglevel**, change the "Value data" using the values listed in the table below, and then click **OK**.
 - a. loginterval
 - b. loglevel
 - c. logsize
2. HKEY_LOCAL_MACHINE\SOFTWARE\Secude\HaloCAD Add-on for AutoCAD: enable_fips (This entry does not require an active HaloCAD session.)

Name	Default Value	Type	Description
loginterval	30	REG_SZ	It automatically removes log files that are older than the default retention period. By default, log files older than 30 days are deleted.
loglevel	0x00000003 (3)	REG_DWORD	Log level information is logged in the halocad.log file. <ul style="list-style-type: none"> • Error—0. Logs error events that prevent program execution. • Record—1. Records all the details about the behavior of the application. • Warning—2. Logs unexpected exceptions that indicate potential problems. • Information—3. A standard log level that highlights the progress of the application. • Verbose—4. Debug events are logged. • Verbose 1—5. Debug 1 events are logged.

Name	Default Value	Type	Description
			<ul style="list-style-type: none"> • Verbose 2–6. Debug 2 events are logged. • Verbose 3–7. Debug 3 events are value. • Verbose 4–8. Debug 4 events are logged.
logsize	1024	REG_SZ	The halocad.log file is created at the start of a HaloCAD session and is stored in the default parent location directory. To have control over log file size, HaloCAD allows you to configure backup/archive the current log file with a timestamp when it exceeds the default size of 1024 MB and creates a new one. Format: halocad<ddmmyy_hhmmss>.log
enable_fips	false	REG_SZ	Enable or Disable FIPS Mode 1. true: MPIP uses only FIPS-compliant encryption algorithms. 2. false: MPIP uses standard encryption algorithms.

Configuration in the HaloCAD Registry

What to do next

1. If the encrypted configuration file was placed with the installer:
 - a. You can launch the CAD application and start using the HaloCAD features immediately.
 - b. The license is activated silently in the background.
 - c. For details on protecting CAD files, refer to the Operations Manual.
2. If the encrypted configuration file was not placed with the installer:
 - a. You must activate the license manually.
 - b. Follow the instructions in the “UI-based Manual License Activation” section of the Technical Reference Manual.

HaloCAD Add-on with PLM

1. If you have installed HaloCAD as a standalone add-on in your environment, you can create a file and protect it with a suitable label. For more information, please refer to the Operations Manual.
2. If you have the HaloCAD add-on installed in a suitable PLM environment, it will intercept the file download and automatically protect it with a suitable label. For more information, please refer to the HaloCAD for PLM Operations Manual.

To integrate with SAP ECTR, you need to install the following components:

- a. HaloENGINE Service
- b. HaloENGINE
- c. HaloCORE Client for NetWeaver
- d. HaloCORE for DMS
- e. HaloCAD KPro

To integrate with Autodesk Vault, you need to install the following components:

- a. HaloENGINE
- b. HaloCAD for Autodesk Vault

Microsoft online documentation

At this stage, if you are not familiar with labels, you may need to refer to Microsoft's online documentation.

3. Installing the HaloCAD Reader Add-on for AutoCAD

This chapter describes how to install and configure the HaloCAD Reader Add-on for AutoCAD.

Before you begin

The following prerequisites must be met:

1. A user who installs the HaloCAD Reader Add-on must have administrator rights.
2. Make sure that CAD applications are closed. If not, HaloCAD prompts a warning message as *“Please close all the CAD applications to proceed with the installation of HaloCAD Reader Add-on for AutoCAD.”* Therefore, we recommend closing all the applications and then start installing the HaloCAD Reader Add-on.
3. Make sure that the HaloCAD Add-on for AutoCAD (full version) is not installed on the same workstation. If it is already installed, HaloCAD prompts a warning message as *“No supported CAD applications are available in the system. (OR) Remove the full version of this product.”*
4. Ensure your Microsoft Entra tenant information is ready to enter when the setup process prompts you to perform a manual installation. Alternatively, for a safe and automatic installation, use `hc.conf.enc`. In both cases, the tenant information must be the same as that used in the full version installation. However, the licensing key is different for each of the add-ons. Refer to the sections “License Activation” and “Secure Installation” in the Technical Reference Manual for further information on the various methods for activating a license key and automatic initialization.

Installation Procedure

Install the application by using the GUI-based setup program that is provided in the installation package.

1. To begin the interactive installation, double-click the installer `HaLoCAD_Reader_AutoCAD_Setup.exe` file. For the installation procedure, follow the installation wizard or refer to the full version.
2. The reader add-on can be installed and configured in the same manner as the full add-on. The command line to execute the silent installation is `HaLoCAD_Reader_AutoCAD_Setup.exe -help`, and follow the commands.
3. **Post-installation checks:**
 - a. To view the add-on, open the **AutoCAD Application** > **HaloCAD** tab will be added.

- b. By default, asterisks are used in MIP SDK logs to mask Personally Identifiable Information (PII), such as Email names and IP addresses. The MIP SDK logs are available at %AppData%\Roaming\Secude\HaloCAD\acad\mip\logs\mip_sdk.miplog. To read this data in clear text, you must manually create a registry entry in the root directory:
Computer\HKEY_CURRENT_USER\SOFTWARE\Secude\HaloCAD Reader Add-on for AutoCAD
Name: mipallowpii, **Type:** REG_SZ, **Value:** true
- c. You can now configure log-related settings in the Registry Root Directory = HKEY_CURRENT_USER\SOFTWARE\Secude\HaloCAD Reader Add-on for AutoCAD. For more details, please refer to the section "[Step 5: Modify Registry Settings](#)". The HaloCAD logs are available at %AppData%\Roaming\Secude\HaloCAD\acad\mip\logs\mip_sdk.miplog.
- d. If your network infrastructure includes a proxy server that provides access to external websites. Then, to connect to the Secude License Manager URL, you need to manually add the Proxy settings in the add-on. To do so, create a registry entry in the root directory,
Computer\HKEY_LOCAL_MACHINE\SOFTWARE\Secude\HaloCAD Reader Add-on for AutoCAD
Name: proxyuri, **Type:** REG_SZ, **Value:** The format is, <URL>:<PORT>. For example,
http://10.41.0.130:808

What to do next

1. If the encrypted configuration file was placed with the installer:
 - a. You can launch the CAD application and begin using the reader add-on right away to view the protected file.
 - b. The license is activated silently in the background.
 - c. For details, refer to the Operations Manual.
2. If the encrypted configuration file was not placed with the installer:
 - a. You must activate the license manually.
 - b. Follow the instructions in the "UI-based Manual License Activation" section of the Technical Reference Manual.

4. Appendix

This section provides supplemental information.

Installer Version Requirement

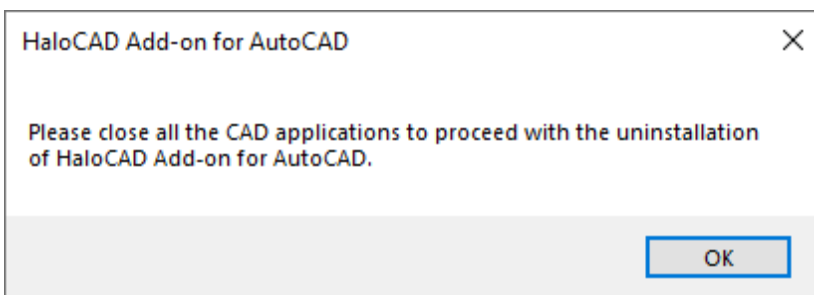
When uninstalling the HaloCAD add-on, use the installer for the currently installed version, whether you run it by double-clicking or via the command line. Using a different installer version may cause errors.

4.1. Uninstalling the HaloCAD Add-on for AutoCAD

When you no longer use the add-on, you may uninstall the application. Uninstalling removes all files and registry settings that were added to your computer during the initial installation.

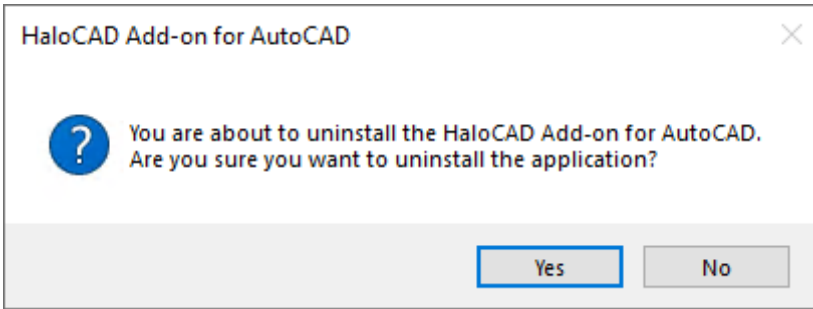
Method #1

1. Click **Start** menu > go to **Control Panel > Programs > Programs and Features > Uninstall a Program** > select **HaloCAD Add-on for AutoCAD** application from the list > right-click and select **Uninstall** option or double-click on the installer `HaLoCAD_AutoCAD_Setup.exe` file.
2. Depending on your Windows security settings, you may get a security warning as "*Do you want to allow the following program to make changes to this computer?*". If you get this security warning, click the **Yes** button to confirm that you want to uninstall the add-on.
3. The HaloCAD installer first scans the current user session for any supported CAD applications running in the background. If it detects any, it displays a notification prompting you to close those applications before continuing with the uninstallation.



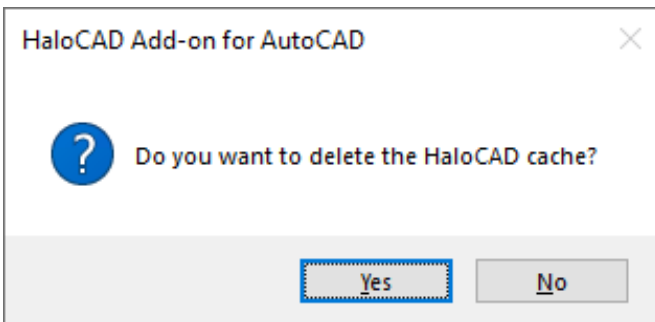
Uninstall message #1

4. Click **OK** and close all HaloCAD-supported CAD applications.
5. Redo [step 1](#), and the following confirmation message appears.



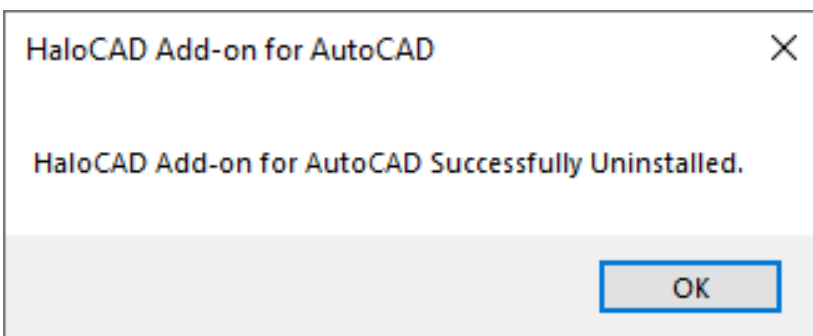
Uninstall Message #2

6. Click **Yes** to confirm the uninstallation of HaloCAD from your computer.
7. When prompted with the following message, click **Yes** to delete the identity of the currently logged-in user from the ongoing session (%AppData%\Roaming\Secude\HaloCAD\acad), or **No** to proceed with the uninstallation without removing the identity. This prompt does not appear if no HaloCAD session has been initiated.



Uninstall message #3

8. The HaloCAD add-on has been successfully uninstalled. Click **OK** to close the dialog box.



Uninstall message #4

Method #2

The add-on can be removed using the command line, as illustrated in the sample below.

1. Open a command prompt.
2. Navigate to the add-on installer's directory.
 - a. **Option 1:** uninstall without deleting the identity of the currently logged-in user

```
HaloCAD_AutoCAD_Setup.exe -uninstall
```

- b. **Option 2:** uninstall deleting the identity of the currently logged-in user

```
HaloCAD_AutoCAD_Setup.exe -uninstall -clearcache <yes>
```

3. The uninstalling process is complete.

4.2. Uninstalling the HaloCAD Reader Add-on for AutoCAD

The process of uninstalling the reader add-on is similar to that of the full version.

Method #1

1. Click **Start** menu > go to **Control Panel > Programs > Programs and Features > Uninstall a Program** > select **HaloCAD Reader Add-on for AutoCAD** application from the list > right-click and select **Uninstall** option or double-click on the installer `HaLoCAD_Reader_AutoCAD_Setup.exe` file.
2. The uninstallation process for the Reader version is similar to that of the Full version; refer to the above section and follow the on-screen instructions to complete the process.

Method #2

The add-on can be removed using the command line, as illustrated in the sample below.

1. Open a command prompt.
2. Navigate to the add-on installer's directory.
 - a. **Option 1:** uninstall without deleting the identity of the currently logged-in user
`HaLoCAD_Reader_AutoCAD_Setup.exe -uninstall`
 - b. **Option 2:** uninstall deleting the identity of the currently logged-in user
`HaLoCAD_Reader_AutoCAD_Setup.exe -uninstall -clearcache <yes>`
3. The uninstalling process is complete.

Index

A		M	
Admintool.....	2	Mip.....	2
C		P	
Cloud.....	2, 16	Plm	2
E		R	
Ectr.....	2	Reader	1
J		Rsa.....	2
Json	2	S	
L		Sccm	2
License	16	Standalone.....	1, 2
		U	
		Uri	2, 16



www.secude.com

About Secude

Secude, a trusted Microsoft and Siemens Digital Industries Software partner, is a global leader in Zero Trust data protection and data governance.

Our solutions extend Microsoft Purview Information Protection (MIP) to secure sensitive files—including CAD and PLM assets—from the moment of creation. By embedding persistent protection and access controls directly into design and engineering data, we help enterprises prevent Intellectual Property (IP) theft, data leakage, reputational damage, and compliance risks. With operations in Europe, North America, and Asia, Secude supports global manufacturers, defense contractors, and AEC firms in implementing robust IT security strategies across the product lifecycle and digital supply chain.