



**HaloCAD Add-on for SolidEdge 2.2
Installation Manual**

Copyright

© 2024-2025 Secude Solutions AG. All Rights Reserved.

This Secude-branded software and its corresponding documentation are the exclusive property of Secude Solutions AG of Luzern, Switzerland and are protected under the various copyright laws around the world and by various other intellectual property laws. The use of this software and/or its documentation and any copying thereof by end users is subject to the terms of a license agreement with Secude Solutions AG. The wrongful use or copying of this software and/or documentation subjects infringers to both criminal and civil liabilities.

ANY USE, COPYING, REPRODUCTION, ALTERATION, TRANSMISSION, OR TRANSLATION OF THESE MATERIALS, IN WHOLE OR IN PART, IN ANY FORM OR BY ANY MEANS, IS STRICTLY PROHIBITED WITHOUT THE PRIOR WRITTEN PERMISSION OF SECUDE SOLUTIONS AG. IF THIS MATERIAL IS PROVIDED WITH SOFTWARE LICENSED BY SECUDE, THE INFORMATION HEREIN IS PROVIDED SUBJECT TO THE TERMS OF THE WARRANTY PROVIDED WITH THE PRODUCT LICENSE. IF THIS MATERIAL IS NOT PROVIDED WITH LICENSED SOFTWARE, THE INFORMATION HEREIN IS PROVIDED "AS IS" WITHOUT WARRANTY OF ANY KIND. IN EITHER CASE, THERE ARE NO OTHER WARRANTIES, EITHER EXPRESS OR IMPLIED, INCLUDING, BUT NOT LIMITED TO THE IMPLIED WARRANTIES OF MERCHANTABILITY, FITNESS FOR A PARTICULAR PURPOSE, NONINFRINGEMENT, OR QUALITY. IN NO EVENT SHALL SECUDE SOLUTIONS AG OR ANY OF ITS AFFILIATES BE LIABLE FOR ANY DIRECT OR INDIRECT, SPECIAL, INCIDENTAL, CONSEQUENTIAL, PUNITIVE, OR EXEMPLARY DAMAGES ARISING OUT OF THE USE OR INABILITY TO USE THE MATERIALS AND/OR INFORMATION CONTAINED HEREIN. Some jurisdictions do not allow the exclusion of implied warranties, so the above exclusion may not apply to you.

Secude Solutions AG takes reasonable measures to ensure the quality of the data and other information produced herein. However, these materials may contain technical inaccuracies or typographical errors, and are not guaranteed to be error-free. Information may be changed or updated without notice. Secude Solutions AG has no obligation to update these materials based on changes to its products or services or those of third parties. Secude Solutions AG may also make improvements or changes to the products or services described in this information at any time without notice. Secude Solutions AG frequently releases new versions and updates to its software, and therefore images shown in this document may be slightly different from what you see on screen.

As with any security product, Secude Solutions AG highly recommends the back up of data as well as passwords on a regular basis. Secude Solutions AG is not responsible for the loss of passwords or data that cannot be retrieved based upon a user's failure to adhere to stringent backup and safe-keeping conventions.

Contact

Secude Solutions AG
Landenbergstrasse 34
6005 Luzern
Switzerland
Tel: +41 41 510 70 70
Mail: info@secude.com

Support

Web: <https://support.secude.com>
Mail: support@secude.com

Table of Contents

1. ABOUT THIS MANUAL.....	1
2. INSTALLING THE HALOCAD ADD-ON FOR SOLID EDGE	2
2.1. Step 1 Fulfill the Prerequisites	2
2.2. Step 2 Obtain the License Key	2
2.3. Step 3 Create an Encrypted JSON File	2
2.4. Step 4 Install the Add-on	2
2.4.1. Graphical Mode.....	3
2.4.2. Silent Mode.....	11
2.4.3. Via System Center Configuration Manager	12
2.5. Step 5 Modify Registry Settings.....	13
3. INSTALLING THE HALOCAD READER ADD-ON FOR SOLID EDGE	15
4. APPENDIX	17
4.1. Uninstalling the HaloCAD Add-on for Solid Edge.....	17
4.2. Uninstalling the HaloCAD Reader Add-on for Solid Edge.....	19

Typographic Conventions

This guide uses the following typographic conventions to distinguish types of in-text information and icons to alert you to important information.

Convention	Description
Boldface type	<ul style="list-style-type: none">• Items you must select, such as menu options, command buttons, or items in a list.• Titles of sections, sub-sections, etc.
<i>Italic type</i>	<ul style="list-style-type: none">• To emphasize a word• Error messages• Table and Figure captions
Consolas Font	<ul style="list-style-type: none">• Package names• Filenames and directory names• XML element names and attribute names• Parameters• File type• Code examples <p>Example:</p> <pre>hesadm.exe start -user <domain\user> -pwd <password></pre>
Hyperlink	Provides quick and easy access to cross-referenced topics. Hyperlinks are highlighted in blue and underlined.
Admonitions	<div style="border: 1px solid yellow; padding: 5px;"><p>Note</p><p>Contains detailed information about a topic and are of direct importance to the subject at hand.</p></div>
	<div style="border: 1px solid red; padding: 5px;"><p>Warning</p><p>Contains information about circumstances, parameters, and so on that MUST be fulfilled. Failure to comply will have consequences for the current operation.</p></div>
	<div style="border: 1px solid green; padding: 5px;"><p>Tip</p><p>Contains useful information about the operation of the application.</p></div>
	<div style="border: 1px solid blue; padding: 5px;"><p>Info</p><p>Contains information, guidelines, or suggestions for performing tasks more effectively.</p></div>

1. About this Manual

This manual walks you through the process of installing and configuring the following HaloCAD add-ons:

1. HaloCAD Add-on for Solid Edge
2. HaloCAD Reader Add-on for Solid Edge

Reference

All technical manuals are included with the product package you have purchased.

Administrators should first read the Technical Reference Manual to understand the architecture of the add-on, know the prerequisites and learn about activating a license key, and refer to the Release Notes to learn about the supported CAD applications before following the instructions in this document.

2. Installing the HaloCAD Add-on for Solid Edge

This chapter walks through the process of installing and configuring the HaloCAD Add-on for Solid Edge. This manual just briefly explains steps 1-3, which cover the prerequisites, obtaining the licensing key, and creating an encrypted JSON file; for more information, please refer to the Technical Reference manual.

2.1. Step 1 Fulfill the Prerequisites

1. To learn more about supported operating systems, file types, and CAD applications, please refer to the Release Notes.
2. Before installing the add-on, it is recommended that you fulfill the prerequisites.

2.2. Step 2 Obtain the License Key

Obtain the license key and decide whether to activate it automatically or manually. For more information, please refer to the Technical Reference Manual.

2.3. Step 3 Create an Encrypted JSON File

For a secure installation create an encrypted JSON file using this admin tool and share it with internal/external parties without disclosing the original tenant details. When the encrypted JSON file is ready, place it with the HaloCAD installer. By reading data from the `hc.conf.enc` file, the installer activates the license and bypasses the "[Initialization](#)" screen, which would otherwise ask for Azure credentials.

2.4. Step 4 Install the Add-on

You can install the add-on in the following modes:

1. Graphical Mode

Graphical mode installation is an interactive, graphical user interface-based method that is driven by a wizard.

2. Silent Mode

Silent-mode installation is a non-interactive method of installing the add-on using command lines.

3. Via System Center Configuration Manager

With System Center Configuration Manager (SCCM), the add-on is deployed on the targeted computers across your enterprise.

2.4.1. Graphical Mode

Before you begin

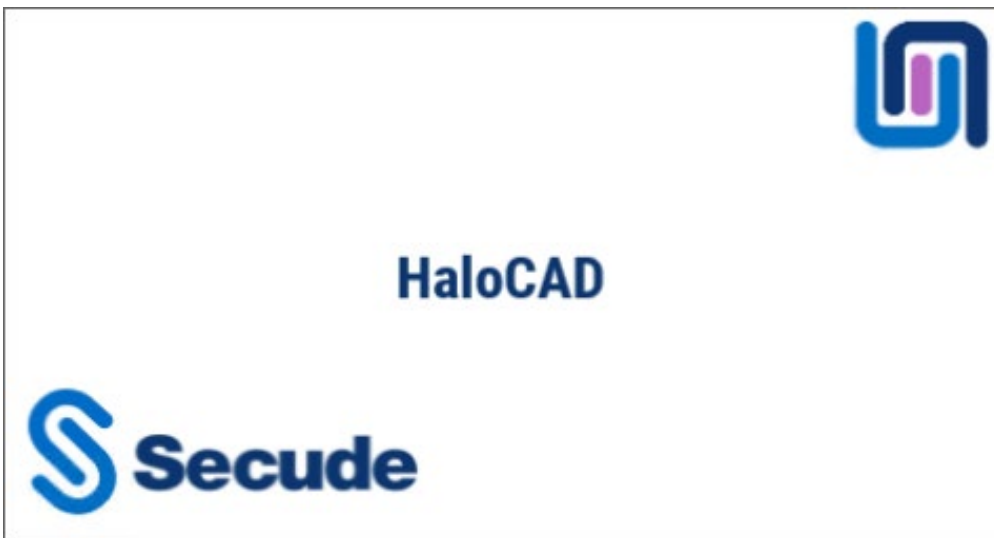
The following prerequisites must be met:

1. A user who installs the HaloCAD Add-on must have administrator rights.
2. You must close all the CAD applications. If not, HaloCAD prompts a warning message as *"Please close all the CAD applications to proceed with the installation of HaloCAD Add-on for Solid Edge."* Therefore, we recommend closing all the applications and then start installing the HaloCAD Add-on.
3. Make sure that the HaloCAD Reader Add-on for Solid Edge is not installed on the same workstation. If it is already installed, HaloCAD prompts a warning message as *"No supported CAD applications are available in the system. (OR) Remove the Reader version of this product."*
4. Make sure your Microsoft Entra tenant information is ready to enter when the setup process prompts for a manual installation. Alternatively, for a safe and automatic installation, use `hc.conf.enc`.

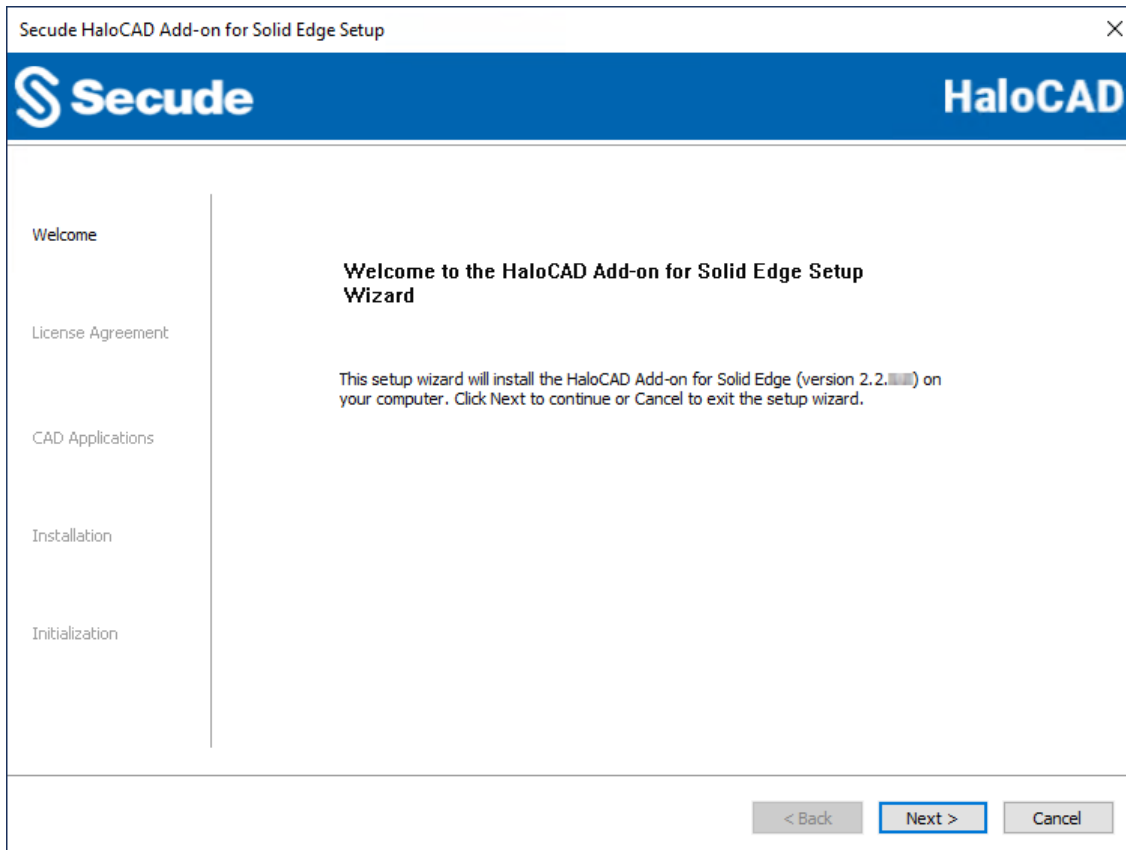
Installation Procedure

Install the add-on using the GUI-based setup program provided in the installation package.

1. To begin the interactive installation, double-click the installer `HALOCAD_SolidEdge_Setup.exe` file.
2. Depending on your Windows security settings, you may get a warning such as *"Do you want to allow the following program to make changes to this computer?"*. If you get this security warning, click the **Yes** button to continue the installation.
3. When the installer starts, you will see the startup dialog followed by the welcome dialog:

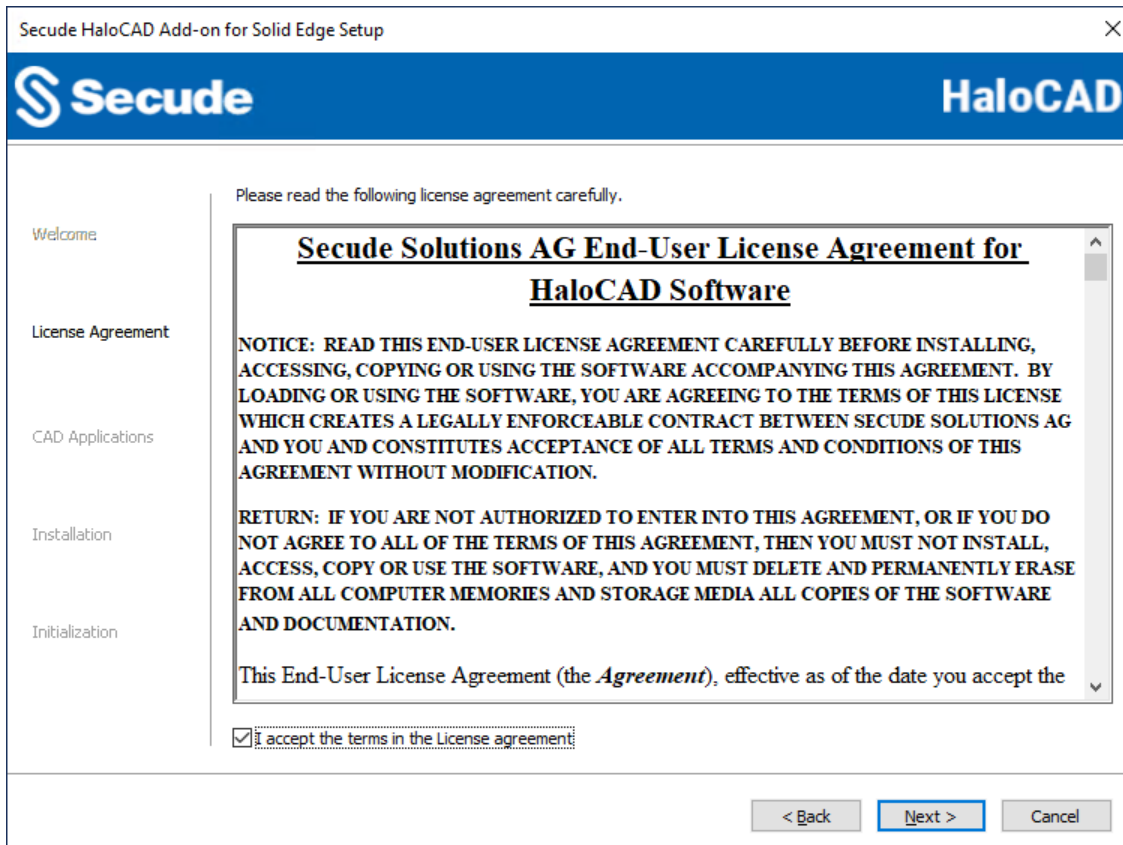


Startup dialog



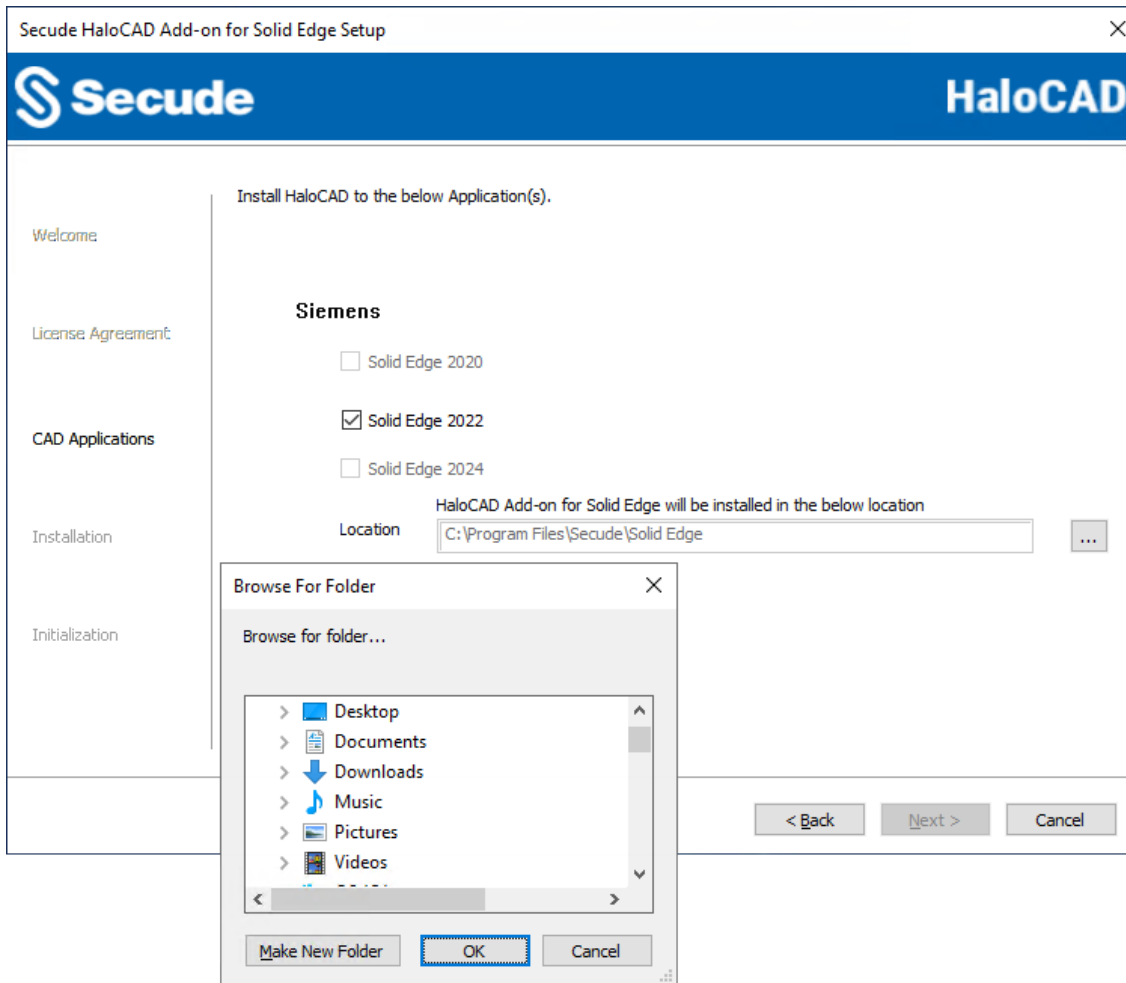
Welcome dialog

4. Click **Next** to continue the installation.
5. The end-user license agreement dialog will appear:



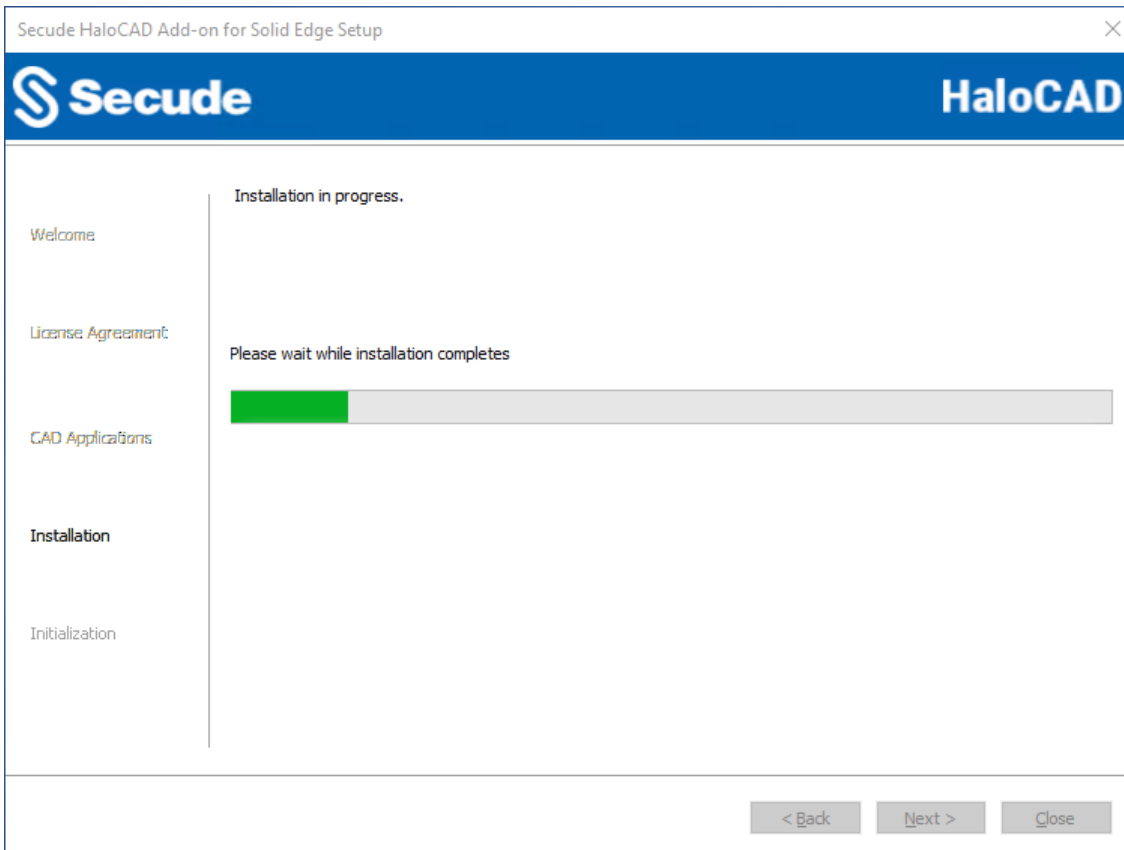
End-User License Agreement dialog

6. Read the End-User License Agreement. If you agree, select **I accept the terms in the License Agreement** and click **Next**.
7. The CAD application version selection dialog will appear:



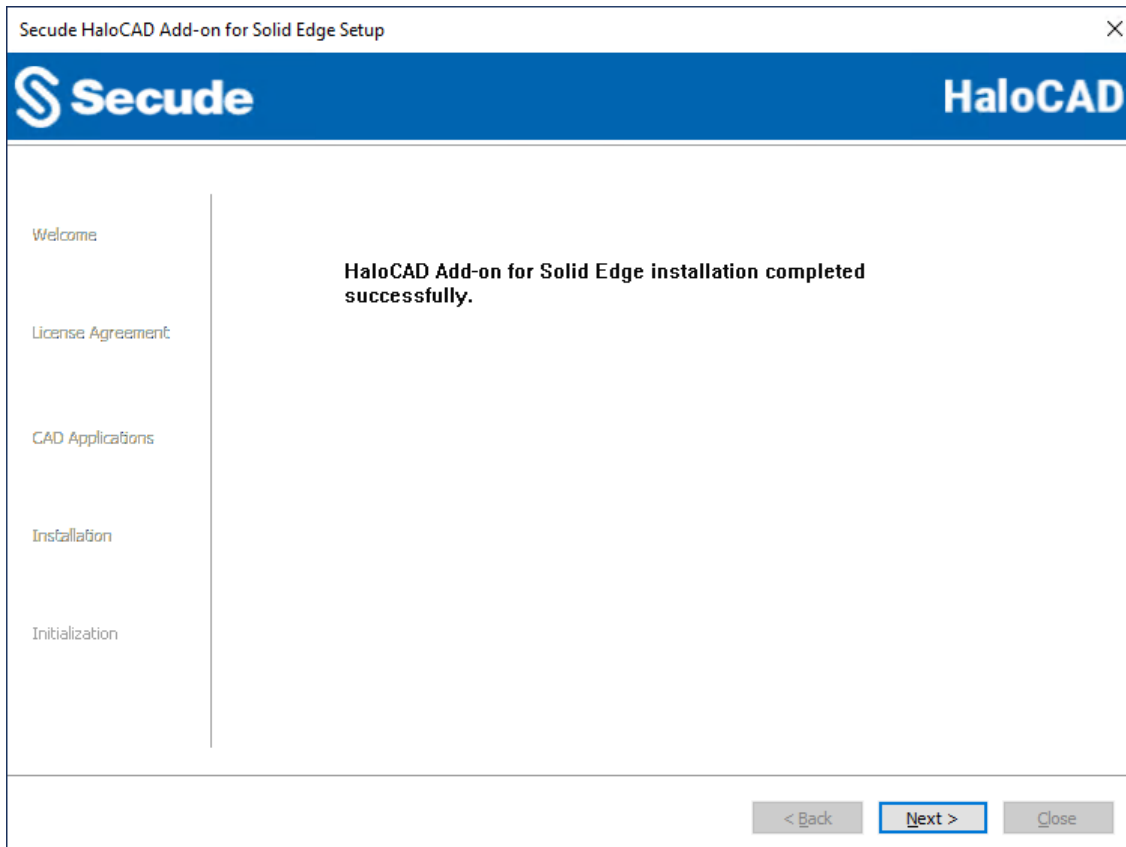
CAD application version selection dialog

8. Select the installed **Solid Edge** application version in your system.
 - a. By default, application files are stored in the program files directory (C:\Program Files\Secude\Solid Edge). If you would like to choose an alternate location, click the **Browse** button and select your location preference.
 - b. When you are finished, click **Next**. To return to any point in the installation process, click the **Back** button (optional).
9. The installation begins and progress is shown in the dialog.



Installation progress dialog

10. When the installation is completed, you will see a message confirming that the add-on has been successfully installed.

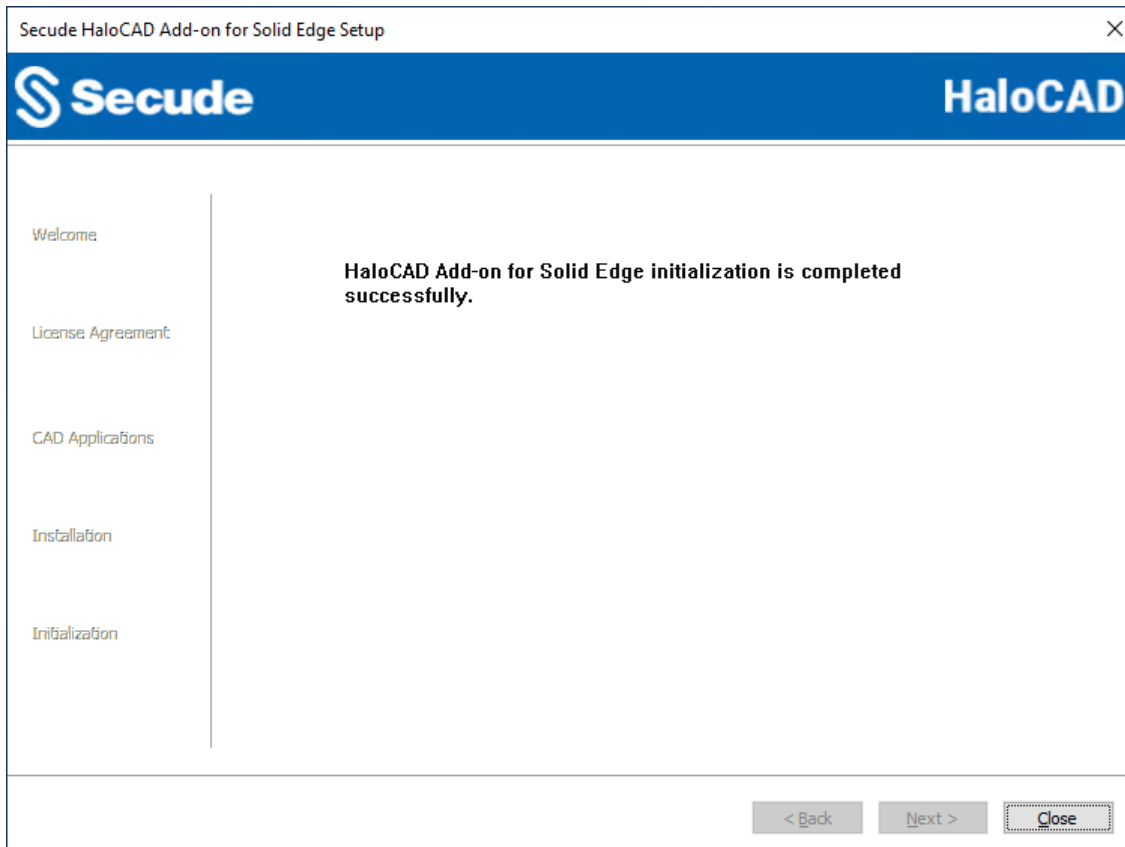


Installation completed dialog

11. Click **Next** in the installation dialog.
12. The initialization dialog will appear. To avoid connectivity issues, make sure to enter the correct Azure application registration information in the screen below. Note: If you have included the `hc.conf.enc` file with the installer, the following initialization screen will not appear, and you will just see the completion dialog. The initialization screen appears only if the `hc.conf.enc` file is not included in the installer folder.

Initialization dialog

- a. **Application ID:** Enter the unique identifier of your registered application. For example, v6ca776-c74e-437d-98ef-662ecb5751tt
 - b. **Redirect URI:** Enter the URI, that was provided when registering the native application in the Azure portal. For example, https://localhost.
 - c. **Tenant ID:** If the registered application is **Single tenant**, you need to enter the globally unique identifier of your tenant if not, you can leave it empty. For example, 9c1cfc28-1ec6-44ea-bec6-e3492ef0cd16
 - d. **Cloud Type:** By default, Commercial will be set. However, based on your Azure subscription and configuration, you can change the cloud type from the list – Commercial / Custom / Germany / US_DoD / US_GCC / US_GCC_High / US_Sec / US_Nat / China_01. In the case of **Custom** cloud type, you need to enter the appropriate URLs in **Protection Cloud URL** (for example, https://api.aadrm.com/) and **Policy Cloud URL** (for example, https://dataservice.protection.outlook.com/).
 - e. Click **Next**.
13. Once the initialization is completed, you will get the success message as shown below.



Initialization completed dialog

14. Click **Close** to close the installation wizard.

Post-installation checks:

1. To view the add-on, open the **Solid Edge Application > HaloCAD** tab.
2. By default, asterisks are used in MIP SDK logs to mask Personally Identifiable Information (PII) (such as Email names and IP addresses). The MIP SDK logs are available at
`%AppData%\Roaming\Secude\HaloCAD\Solid Edge\mip\logs\mip_sdk.miplog`. To read this data in clear text, you must manually create a registry entry in the root directory:
`Computer\HKEY_CURRENT_USER\SOFTWARE\Secude\HaloCAD Add-on for Solid Edge`
Name: mipallowpii, **Type:** REG_SZ, **Value:** true
3. You can now configure log-related settings in the Registry Root Directory =
`HKEY_CURRENT_USER\SOFTWARE\Secude\HaloCAD Add-on for Solid Edge`. For more details, please refer to the section "[Step 5 Modify Registry Settings](#)". The HaloCAD logs are available at
`%AppData%\Roaming\Secude\HaloCAD\Solid Edge\halocad.log`
4. If your network infrastructure includes a proxy server that provides access to external websites. Then, to connect to the Secude License Manager URL, you need to manually add the Proxy settings in the add-on. To do so, create a registry entry in the root directory,
`Computer\HKEY_LOCAL_MACHINE\SOFTWARE\Secude\HaloCAD Add-on for Solid Edge`

Name: proxyuri, **Type:** REG_SZ, **Value:** The format is, <URL>:<PORT>. For example, http://10.41.0.130:808

2.4.2. Silent Mode

Besides graphical mode, the add-on can be installed in silent mode, which does not require user involvement or display a user interface. It is a convenient way to streamline installation using the command at once.

1. Open the Command Prompt with elevated rights (Run as Administrator).
2. Navigate to the add-on installer directory.
3. To know the list of options available in silent mode, follow the steps given below:

Type HaloCAD_SolidEdge_Setup.exe -help

Press Enter

Output

...

```
HaloCAD_SolidEdge_Setup.exe -install -application <Solid Edge 2020|Solid Edge 2022|Solid Edge 2024> -customdirlocation <default|custom> -applicationid <azure_application_id> -redirecturi <azure_redirect_url> -tenantid <azure_tenant_id for Single-tenant app|null for Multi-tenant app> [-cloudtype <Commercial|Custom|Germany|US_DoD|US_GCC|US_GCC_High|US_Sec|US_Nat|China> <protectioncloudurl> <policycloudurl>]
```

```
HaloCAD_SolidEdge_Setup.exe -uninstall
```

For Silent Mode Installation, if ENC file already exists in the same location

```
HaloCAD_SolidEdge_Setup.exe -install -application <Solid Edge 2020|Solid Edge 2022|Solid Edge 2024> -customdirlocation <default|custom>
```

4. The following command illustrates how to install the add-on using the Azure application details.

```
HaloCAD_SolidEdge_Setup.exe -install -application "Solid Edge 2020" - customdirlocation C:\Program Files\Secude -applicationid v6ca776-c74e-437d-98ef-662ecb5751tt -redirecturi https://localhost -tenantid 9c1cfc28-1ec6-44ea-bec6-e3492ef0cd16 -cloudtype Custom https://api.aadrm.com https://dataservice.protection.outlook.com
```

5. The example below shows how to install the add-on using the hc.conf.enc file located in the same installation location as mentioned.

```
HaloCAD_SolidEdge_Setup.exe -install -application "Solid Edge 2020" - customdirlocation C:\Program Files\Secude
```

6. Press Enter.

7. The installation is complete.

2.4.3. Via System Center Configuration Manager

The Microsoft System Center Configuration Manager (SCCM) is an administration tool that enables organizations to push out relevant operating systems and applications to Windows users quickly and cost-effectively within its environment.

Using SCCM, the add-on can be installed silently and automatically to the specifically targeted computers across your enterprise.

Before you begin

1. Make sure that you have read the prerequisites given in the section "[Graphical Mode](#)".
2. We recommend familiarizing the best practices for creating a deployment procedure.
3. For information about preparing your environment, please refer to the online Microsoft documentation.

Follow the below steps to deploy using SCCM:

1. This guide assumes that you have already set up a SCCM environment.
2. Use the silent mode commands mentioned in the section "[Silent Mode](#)" when needed.

2.5. Step 5 Modify Registry Settings

Prerequisite: To modify the add-on registry entries, first launch the CAD application and log in to Azure RMS for an active HaloCAD session. For more information, please refer to the Operations Manual.

Once you have logged into the HaloCAD Session, open Registry Editor, navigate to this path Registry Root Directory = HKEY_CURRENT_USER\SOFTWARE\Secude\HaloCAD Add-on for Solid Edge, and modify the Reg Key as you want. For example, to change the log level, double-click **loglevel**, change the "Value data" using the values listed in the table below, and then click **OK**.

Name	Default Value	Type	Description
loginterval	30	REG_SZ	It removes the log files older than the default time frame. By default, the log files older than 30 days will be deleted.
loglevel	0x00000003 (3)	REG_DWORD	<p>Log level information is logged in the halocad.log file.</p> <ul style="list-style-type: none"> • Error—0. Logs error events that prevent program execution. • Record—1. Records all the details about the behavior of the application. • Warning—2. Logs unexpected exceptions that indicate potential problems. • Information—3. A standard log level that highlights the progress of the application. • Verbose—4. Debug events are logged. • Verbose 1—5. Debug 1 events are logged. • Verbose 2—6. Debug 2 events are logged. • Verbose 3—7. Debug 3 events are value. • Verbose 4—8. Debug 4 events are logged.

Secude

Name	Default Value	Type	Description
logsize	1024	REG_SZ	The halocad.log file is created at the start of a HaloCAD session and is stored in the default parent location directory. To have control over log file size, HaloCAD allows you to configure backup/archive the current log file with a timestamp when it exceeds the default size of 1024 MB and creates a new one. Format: halocad<ddmmyy_hhmmss>.log

Configuration in the HaloCAD Registry

What to do next

1. If you have generated the encrypted configuration file together with the license key, you could launch the CAD application and start using the HaloCAD features straight away. This means that the license is activated silently while using HaloCAD features in the CAD application. For more details, please refer to the Operations Manual.
2. If you did not activate the license using the encrypted configuration file, follow the section “UI-based Manual License Activation” in the Technical Reference Manual.

HaloCAD Add-on with PLM

1. If you have installed HaloCAD as a standalone add-on in your environment, you can create a file and protect it with a suitable label. For more information, please refer to the Operations Manual.
2. If you have the HaloCAD add-on installed in a suitable PLM environment, it will intercept the file download and automatically protect it with a suitable label. For more information, please refer to the HaloCAD for PLM Operations Manual.

To integrate with SAP ECTR, you need to install the following components:

- a. HaloENGINE Service
- b. HaloENGINE
- c. HaloCORE Client for NetWeaver
- d. HaloCORE for DMS
- e. HaloCAD KPro

Microsoft online documentation

At this stage, if you are NOT familiar with labels, you might need to refer to Microsoft online documentation.

3. Installing the HaloCAD Reader Add-on for Solid Edge

This chapter describes how to install and configure the HaloCAD Reader Add-on for Solid Edge.

Before you begin

The following prerequisites must be met:

1. A user who installs the HaloCAD Reader Add-on must have administrator rights.
2. You must close all the CAD applications. If not, HaloCAD prompts a warning message as *"Please close all the CAD applications to proceed with the installation of HaloCAD Reader Add-on for Solid Edge."* Therefore, we recommend closing all the applications and then start installing the HaloCAD Reader Add-on.
3. Make sure that the HaloCAD Add-on for Solid Edge (full version) is not installed on the same workstation. If it is already installed, HaloCAD prompts a warning message as *"No supported CAD applications are available in the system. (OR) Remove the full version of this product."*
4. Make sure your Microsoft Entra tenant information is ready to enter when the setup process prompts for a manual installation. Alternatively, for a safe and automatic installation, use `hc.conf.enc`. In both cases, the tenant information must be the same as that used in the full version installation. However, the licensing key is different for each of the add-ons. Refer to the sections "License Activation" and "Secure Installation" in the Technical Reference Manual for further information on the various methods for activating a license key and automatic initialization and activation of a license.

Installation Procedure

Install the add-on by using the GUI-based setup program that is provided in the installation package.

1. To begin the interactive installation, double-click the installer `HALOCAD_Reader_SolidEdge_Setup.exe` file. For the installation procedure, follow the installation wizard or refer to the full version.
2. The reader add-on can be installed and configured in the same manner as the full add-on. The command line to execute the silent installation is `HALOCAD_Reader_SolidEdge_Setup.exe -helpand` follow the commands.
3. **Post-installation checks:**
 - a. To view the add-on, open the **Solid Edge Application > HaloCAD** tab will be added.

- b. By default, asterisks are used in MIP SDK logs to mask Personally Identifiable Information (PII) (such as Email names and IP addresses). The MIP SDK logs are available at %AppData%\Roaming\Secude\HaloCAD\Solid Edge\mip\logs\mip_sdk.miplog. To read this data in clear text, you must manually create a registry entry in the root directory:
Computer\HKEY_CURRENT_USER\SOFTWARE\Secude\HaloCAD Reader Add-on for Solid Edge
Name: mipallowpii, **Type:** REG_SZ, **Value:** true
- c. You can now configure log-related settings in the Registry Root Directory = HKEY_CURRENT_USER\SOFTWARE\Secude\HaloCAD Reader Add-on for Solid Edge. For more details, please refer to the section "[Step 5 Modify Registry Settings](#)". The HaloCAD logs are available at %AppData%\Roaming\Secude\HaloCAD\Solid Edge\halocad.log.
- d. If your network infrastructure includes a proxy server that provides access to external websites. Then, to connect to the Secude License Manager URL, you need to manually add the Proxy settings in the add-on. To do so, create a registry entry in the root directory,
Computer\HKEY_LOCAL_MACHINE\SOFTWARE\Secude\HaloCAD Reader Add-on for Solid Edge
Name: proxyuri, **Type:** REG_SZ, **Value:** The format is, <URL>:<PORT>. For example,
http://10.41.0.130:808

What to do next

1. If you have generated the encrypted configuration file together with the license key, you could launch the CAD application and use the HaloCAD reader add-on right away to view the protected files. This means that the license is activated silently while using HaloCAD features in the CAD application. For more details, please refer to the Operations Manual.
2. If you did not activate the license using the encrypted configuration file, follow the section "UI-based Manual License Activation" in the Technical Reference Manual.

4. Appendix

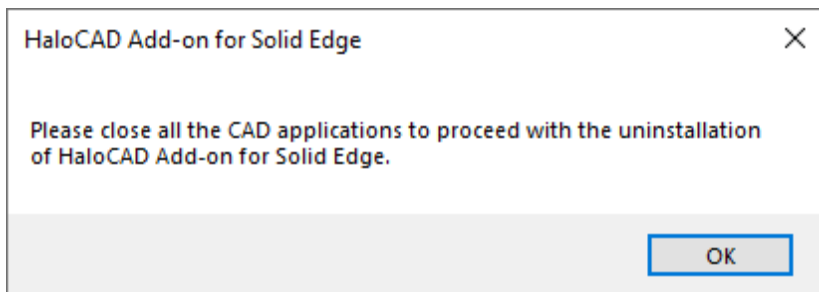
This section provides supplemental information.

4.1. Uninstalling the HaloCAD Add-on for Solid Edge

When you no longer use the add-on, you may uninstall the application. Uninstalling removes all files and registry settings that were added to your computer during the initial installation.

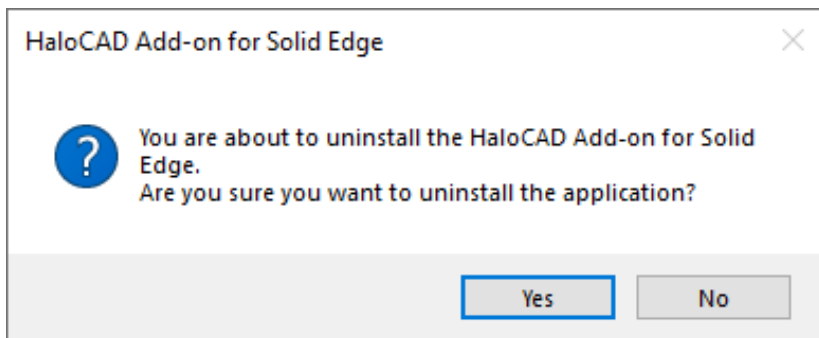
Method #1

1. Click **Start** menu > go to **Control Panel > Programs > Programs and Features > Uninstall a Program** > select **HaloCAD Add-on for Solid Edge** application from the list > right-click and select **Uninstall** option or double-click on the installer HaloCAD_SolidEdge_Setup.exe file.
2. Depending on your Windows security settings, you may get a security warning as "Do you want to allow the following program to make changes to this computer?". If you get this security warning, click the **Yes** button to confirm that you want to uninstall the add-on.
3. The HaloCAD installer first looks for background-running, active CAD applications in a user-logged-in session. If identified, it displays the following notification to prompt you to end any open applications before letting you resume uninstalling.



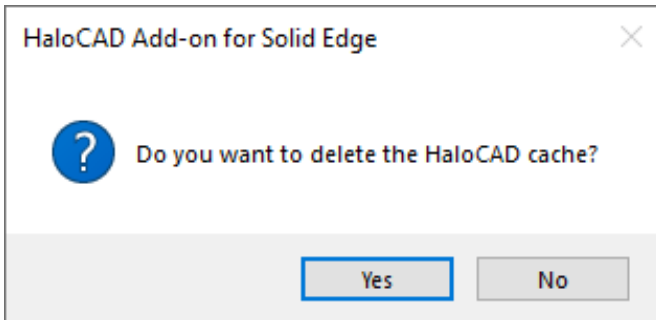
Uninstall message #1

4. Click **OK** and then close all CAD applications.
5. Redo [step 1](#), the following confirmation message will appear.



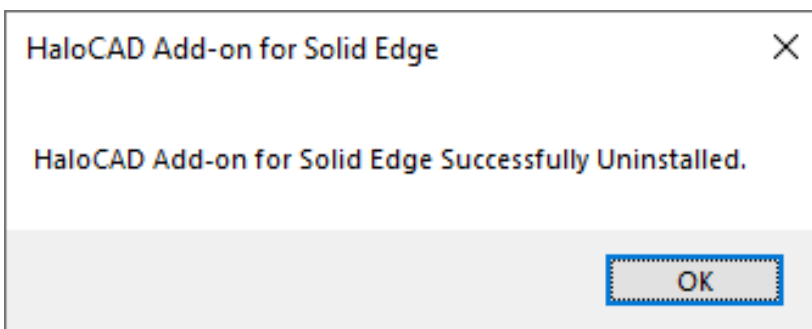
Uninstall Message #2

- Click **Yes** to confirm that you want to remove it from the computer.
- When prompted with the following question, choose **Yes** if you want to delete the currently logged-in user's identity from the ongoing session (%AppData%\Roaming\Secude\HaloCAD\Solid Edge) or **No** to continue the uninstall process without doing so. This notification does not appear if a user has not started a HaloCAD session.



Uninstall Message #3

- The add-on has been uninstalled successfully. Click **OK** to close the dialog.



Uninstall message #4

- The uninstalling process is complete.

Method #2

The add-on can be removed using the command line, as illustrated in the sample below.

- Open a command prompt.
- Navigate to the add-on installer's directory.
Example: HaloCAD_SolidEdge_Setup.exe -uninstall
- The uninstalling process is complete.

4.2. Uninstalling the HaloCAD Reader Add-on for Solid Edge

Uninstalling reader add-on is also similar to that of the full version.

Method #1

1. Click **Start** menu > go to **Control Panel > Programs > Programs and Features > Uninstall a Program** > select **HaloCAD Reader Add-on for Solid Edge** application from the list > right-click and select **Uninstall** option or double-click on the installer HaloCAD_Reader_SolidEdge_Setup.exe file.
2. Follow the instructions as mentioned in the above section.

Method #2

The add-on can be removed using the command line, as illustrated in the sample below.

1. Open a command prompt.
2. Navigate to the add-on installer's directory.
Example: HaloCAD_Reader_SolidEdge_Setup.exe -uninstall
3. The uninstalling process is complete.



www.secude.com

About Secude

Secude, a Microsoft and SAP Partner, is a global leader for Zero Trust Data-centric security and Enterprise Digital Rights Management (EDRM) solutions.

For more than 25 years Secude has been trusted by many Fortune 500 and DAX-listed companies for architecting, implementing, and protecting their data. Our data-centric security professionals apply their passion and deep domain expertise to provide a holistic approach to protect priceless Intellectual Property (IP) in CAD & SAP based collaborations and supply chains.

With branches in Europe, North America and Asia, Secude supports customers with the implementation of IT security strategies through a global network.