



HaloCAD

HaloCAD for Viewers
Installation and Usage Manual
Version 1.6

Copyright

© 2025-2026 Secude Solutions AG. All Rights Reserved.

This Secude-branded software and its corresponding documentation are the exclusive property of Secude Solutions AG of Luzern, Switzerland and are protected under the various copyright laws around the world and by various other intellectual property laws. The use of this software and/or its documentation and any copying thereof by end users is subject to the terms of a license agreement with Secude Solutions AG. The wrongful use or copying of this software and/or documentation subjects infringers to both criminal and civil liabilities.

ANY USE, COPYING, REPRODUCTION, ALTERATION, TRANSMISSION, OR TRANSLATION OF THESE MATERIALS, IN WHOLE OR IN PART, IN ANY FORM OR BY ANY MEANS, IS STRICTLY PROHIBITED WITHOUT THE PRIOR WRITTEN PERMISSION OF SECUDE SOLUTIONS AG. IF THIS MATERIAL IS PROVIDED WITH SOFTWARE LICENSED BY SECUDE, THE INFORMATION HEREIN IS PROVIDED SUBJECT TO THE TERMS OF THE WARRANTY PROVIDED WITH THE PRODUCT LICENSE. IF THIS MATERIAL IS NOT PROVIDED WITH LICENSED SOFTWARE, THE INFORMATION HEREIN IS PROVIDED "AS IS" WITHOUT WARRANTY OF ANY KIND. IN EITHER CASE, THERE ARE NO OTHER WARRANTIES, EITHER EXPRESS OR IMPLIED, INCLUDING, BUT NOT LIMITED TO THE IMPLIED WARRANTIES OF MERCHANTABILITY, FITNESS FOR A PARTICULAR PURPOSE, NONINFRINGEMENT, OR QUALITY. IN NO EVENT SHALL SECUDE SOLUTIONS AG OR ANY OF ITS AFFILIATES BE LIABLE FOR ANY DIRECT OR INDIRECT, SPECIAL, INCIDENTAL, CONSEQUENTIAL, PUNITIVE, OR EXEMPLARY DAMAGES ARISING OUT OF THE USE OR INABILITY TO USE THE MATERIALS AND/OR INFORMATION CONTAINED HEREIN. Some jurisdictions do not allow the exclusion of implied warranties, so the above exclusion may not apply to you.

Secude Solutions AG takes reasonable measures to ensure the quality of the data and other information produced herein. However, these materials may contain technical inaccuracies or typographical errors, and are not guaranteed to be error-free. Information may be changed or updated without notice. Secude Solutions AG has no obligation to update these materials based on changes to its products or services or those of third parties. Secude Solutions AG may also make improvements or changes to the products or services described in this information at any time without notice. Secude Solutions AG frequently releases new versions and updates to its software, and therefore images shown in this document may be slightly different from what you see on screen.

As with any security product, Secude Solutions AG highly recommends the back up of data as well as passwords on a regular basis. Secude Solutions AG is not responsible for the loss of passwords or data that cannot be retrieved based upon a user's failure to adhere to stringent backup and safe-keeping conventions.

Contact

Secude Solutions AG
Murbacherstrasse 19
6003 Luzern, Switzerland
Mail: info@secude.com

Support

Web: <https://support.secude.com>
Mail: support@secude.com

Table of Contents

1. INTRODUCTION	1
2. GENERAL FAQs	2
3. INSTALLING HALOCAD FOR VIEWERS	3
3.1. Step 1: Fulfill the Prerequisites	3
3.2. Step 2: Create an Encrypted JSON File	3
3.3. Step 3: Install the Add-on	3
3.3.1. Graphical Mode.....	3
3.3.2. Silent Mode.....	11
3.3.3. Via System Center Configuration Manager	12
3.4. Registry Settings.....	12
4. OPERATING INSTRUCTIONS	15
4.1. How does it work?	15
4.2. How to Open a Protected File in HaloCAD for Viewers?	15
4.2.1. What Happens if You Try to Copy Data or Print Screen?.....	17
4.2.2. What Happens if You Try to Export or Print?.....	17
4.2.3. What Happens if You Try to Write or Send the File via Email?	18
5. TECHNICAL SUPPORT	19
6. APPENDIX	20
6.1. Third-Party Libraries	20
6.2. Uninstalling the HaloCAD for Viewers.....	21

Typographic Conventions

This guide uses the following typographic conventions to distinguish types of in-text information and icons to alert you to important information.

Convention	Description
Boldface type	<ul style="list-style-type: none">• Items you must select, such as menu options, command buttons, or items in a list.• Titles of sections, sub-sections, etc.
<i>Italic type</i>	<ul style="list-style-type: none">• To emphasize a word• Error messages• Table and Figure captions
Consolas Font	<ul style="list-style-type: none">• Package names• Filenames and directory names• XML element names and attribute names• Parameters• File type• Code examples <p>Example:</p> <pre>hesadm.exe start -user <domain\user> -pwd <password></pre>
Hyperlink	Provides quick and easy access to cross-referenced topics. Hyperlinks are highlighted in blue and underlined.
Admonitions	<div data-bbox="416 1171 1394 1279" style="border: 1px solid yellow; padding: 5px;"><p>Note Provides additional information relevant to the topic.</p></div> <div data-bbox="416 1335 1394 1518" style="border: 1px solid red; padding: 5px;"><p>Warning Contains information about circumstances, parameters, and so on that MUST be fulfilled. Failure to comply will have consequences for the current operation.</p></div> <div data-bbox="416 1574 1394 1682" style="border: 1px solid green; padding: 5px;"><p>Tip Contains useful information about the operation of the application.</p></div> <div data-bbox="416 1738 1394 1883" style="border: 1px solid blue; padding: 5px;"><p>Info Contains information, guidelines, or suggestions for performing tasks more effectively.</p></div>

1. Introduction

As a part of the digital process chain, CAD files are highly valued, such as drawings, blueprints, and prototypes that need to be shared with suppliers, partners, or vendors on a day-to-day basis. There is always a high risk of data being lost or stolen, knowingly or unknowingly, when collaborating with suppliers or partners. With Secude's HaloCAD for Viewers, you can ensure your design files are secure with persistent access controls without any risk of data getting stolen or lost.

About this Manual

This manual walks you through the process of installing, configuring, and operating HaloCAD for Viewers.

Reference

All technical manuals are included with the product package you have purchased.

Administrators should first read the Technical Reference Manual to understand the add-on's architecture and learn about the prerequisites. They should also refer to the Release Notes to learn about the supported CAD applications before following the instructions in this document.

2. General FAQs

This chapter provides answers to the most frequently asked questions (FAQ). If you have any further inquiries, please contact our sales representative or support team.

1. **What can HaloCAD for Viewers offer a user?**

HaloCAD for Viewers is a lightweight application that allows users with “View only” access to view protected files in other CAD viewer applications.

2. **Is it possible to view all types of CAD files that are protected?**

You can only access HaloCAD-protected CAD files that are mentioned as supported file types in the Release Notes.

3. **What languages are supported by the HaloCAD add-on?**

Currently, the HaloCAD add-on only supports the English language.

4. **What happens if an unauthorized person tries to open a HaloCAD-protected CAD file?**

Initially, user authentication occurs. It is a process of verifying a user's identity. If the user fails during the authentication, he/she will be prompted with an error message, and access will be denied.

3. Installing HaloCAD for Viewers

3.1. Step 1: Fulfill the Prerequisites

1. Refer to the Release Notes to learn about supported operating systems, file types, and CAD applications.
2. Before installing, make sure all prerequisites are fulfilled.

3.2. Step 2: Create an Encrypted JSON File

To ensure a secure installation, create an encrypted JSON file using the admin tool and share it without exposing tenant details. Place the encrypted file with the HaloCAD installer. The installer reads configuration data from the `hc.conf.enc` file and bypasses the "[Initialization](#)" screen, which would otherwise require Microsoft Entra ID application details. Note: A license key is not required for HaloCAD for Viewers.

3.3. Step 3: Install the Add-on

You can install the add-on in the following modes:

1. Graphical Mode

Graphical mode installation is an interactive, graphical user interface-based method that is driven by a wizard.

2. Silent Mode

Silent-mode installation is a non-interactive method of installing the add-on using command lines.

3. Via System Center Configuration Manager

With System Center Configuration Manager (SCCM), the add-on is deployed on the targeted computers across your enterprise.

3.3.1. Graphical Mode

Before you begin

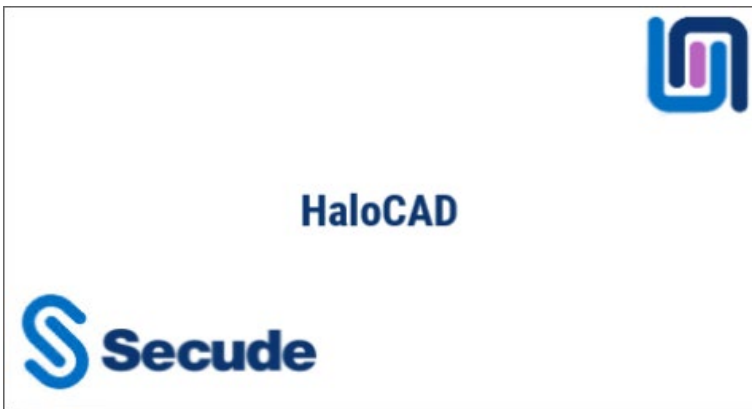
The following prerequisites must be met:

1. A user who installs HaloCAD for Viewers must have administrator rights.
2. Ensure that your Microsoft Entra tenant details are ready when the installation UI requests them. As an alternative, you can use `hc.conf.enc` for a secure and automated installation.

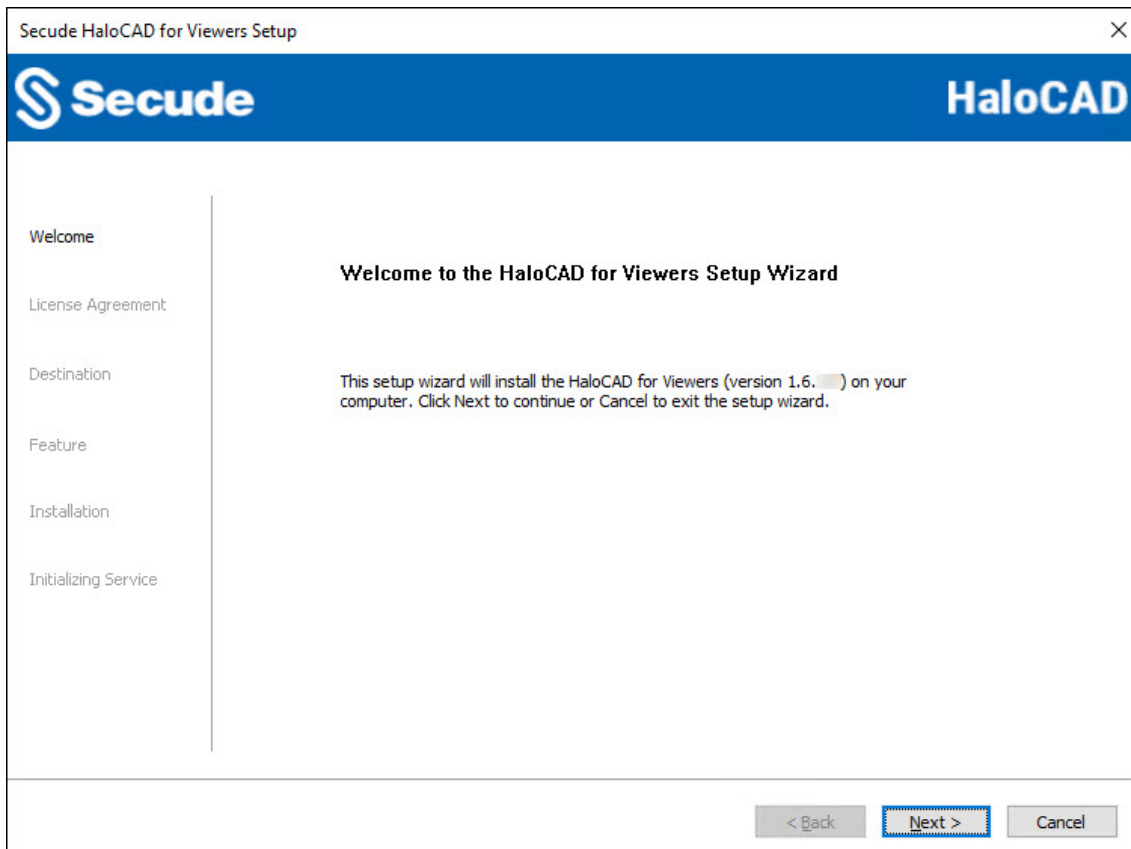
Installation Procedure

Install the HaloCAD for Viewers using the GUI-based setup program provided in the installation package.

1. Double-click the installer HaloCAD_Viewers_Shield_Setup.exe file.
2. Depending on your Windows security settings, a prompt may appear stating, "Do you want to allow the following program to make changes to this computer?" If this warning appears, click **Yes** to continue with the installation.
3. When the installer starts, the **Startup** dialog appears, followed by the **Welcome** dialog.

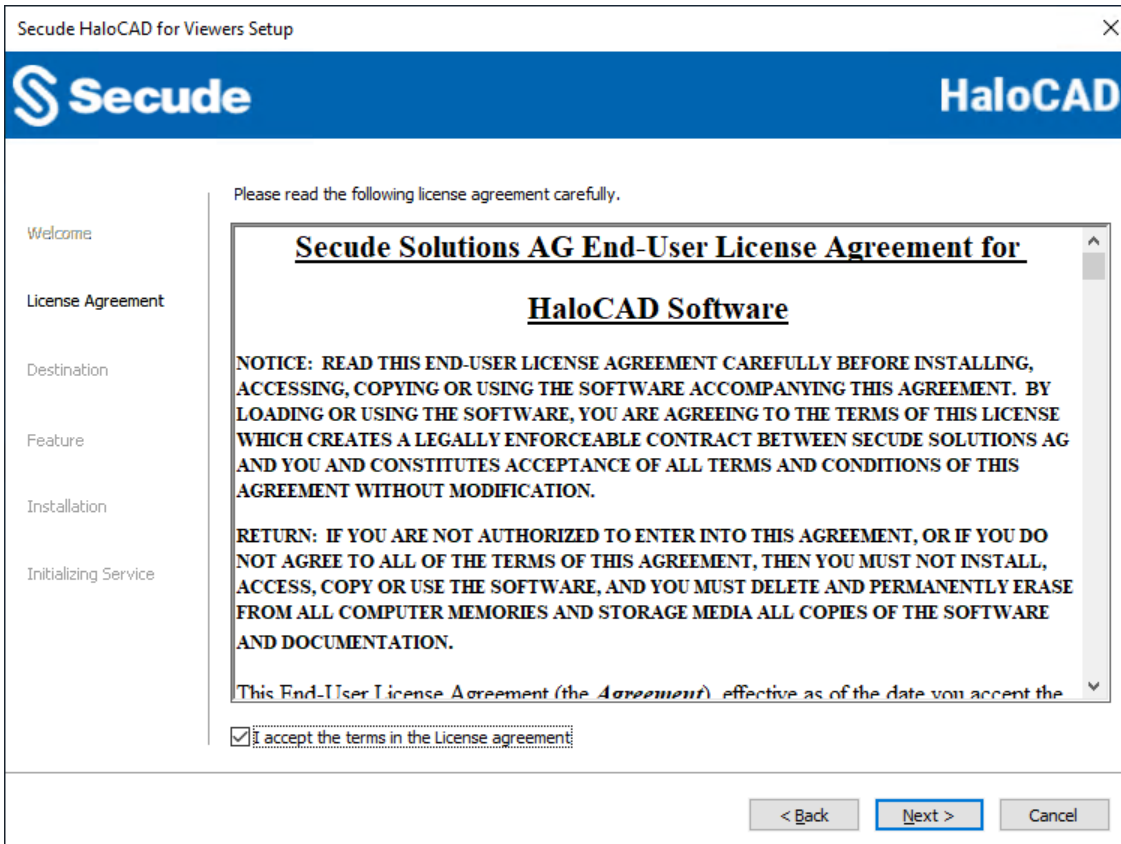


Startup dialog



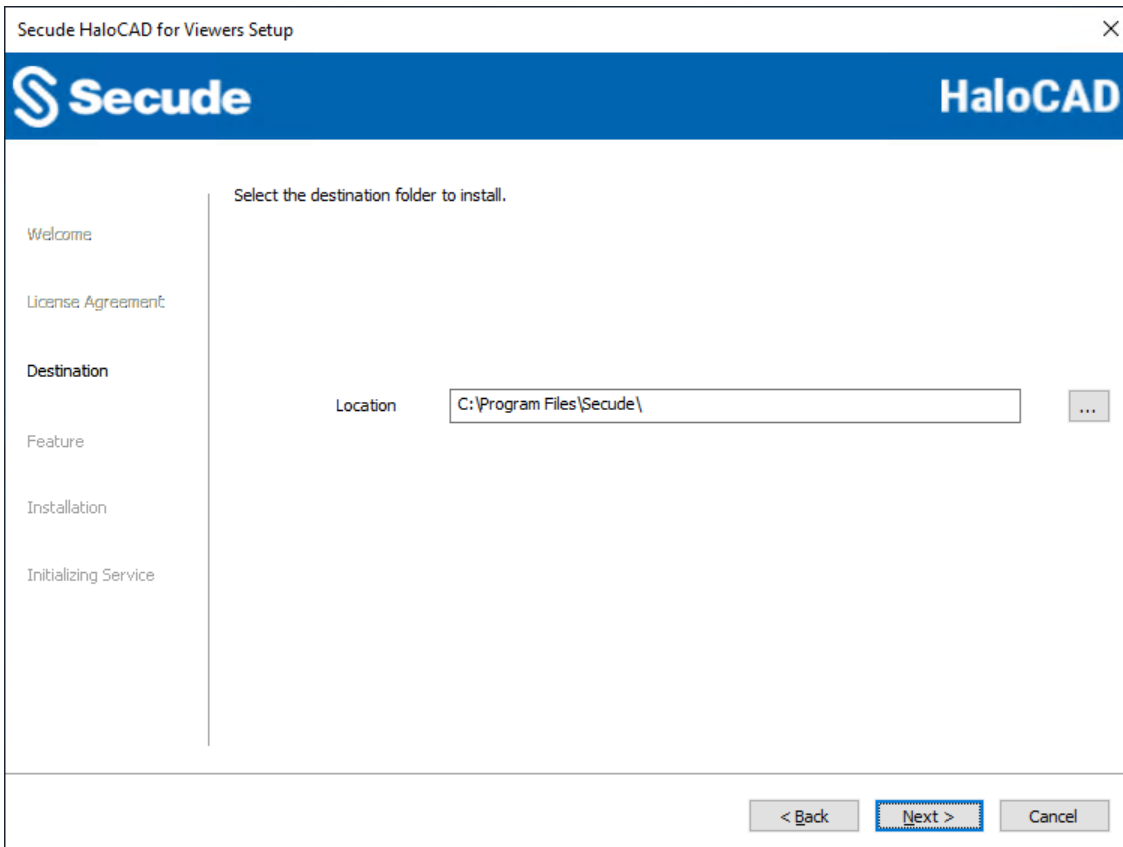
Welcome dialog

4. Click **Next** to continue the installation.
5. The **End-User License Agreement (EULA)** dialog appears.



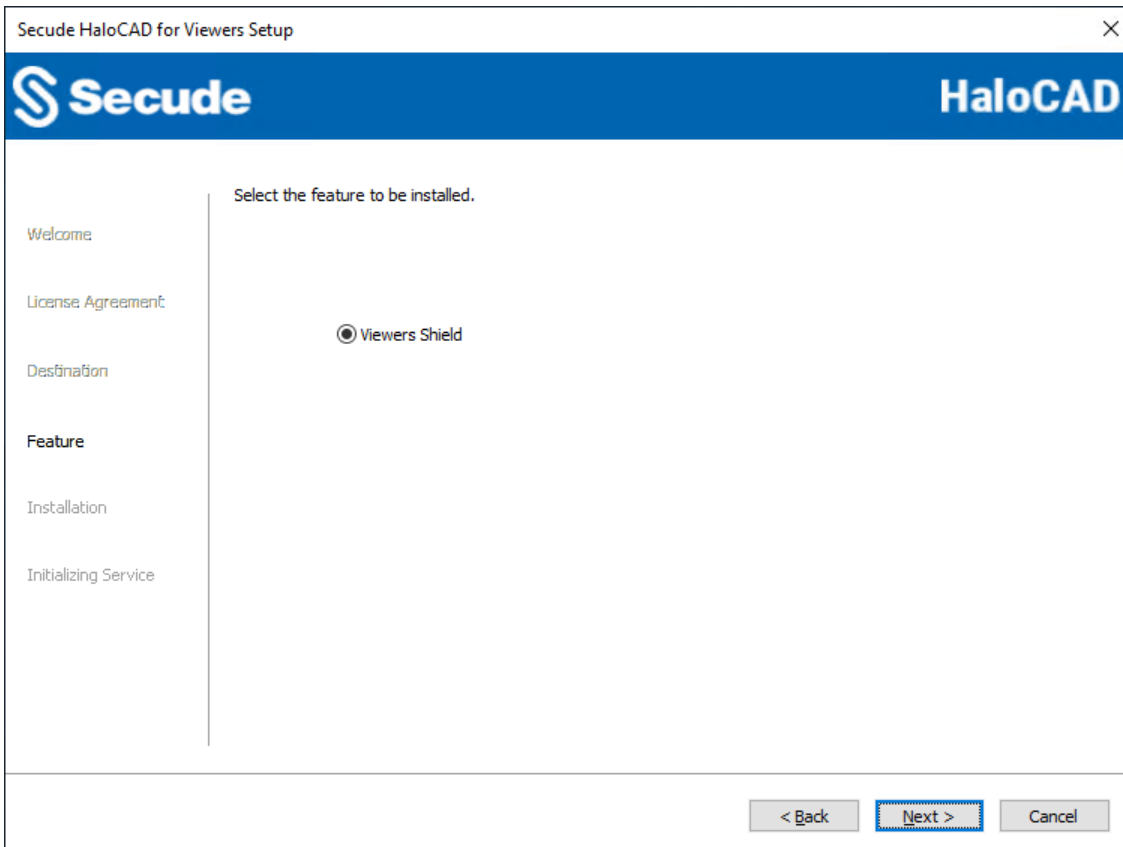
End-User License Agreement dialog

6. Read the **End-User License Agreement**. If you agree, select **I accept the terms in the License Agreement**, and click **Next** to continue.
7. The destination folder selection dialog appears:



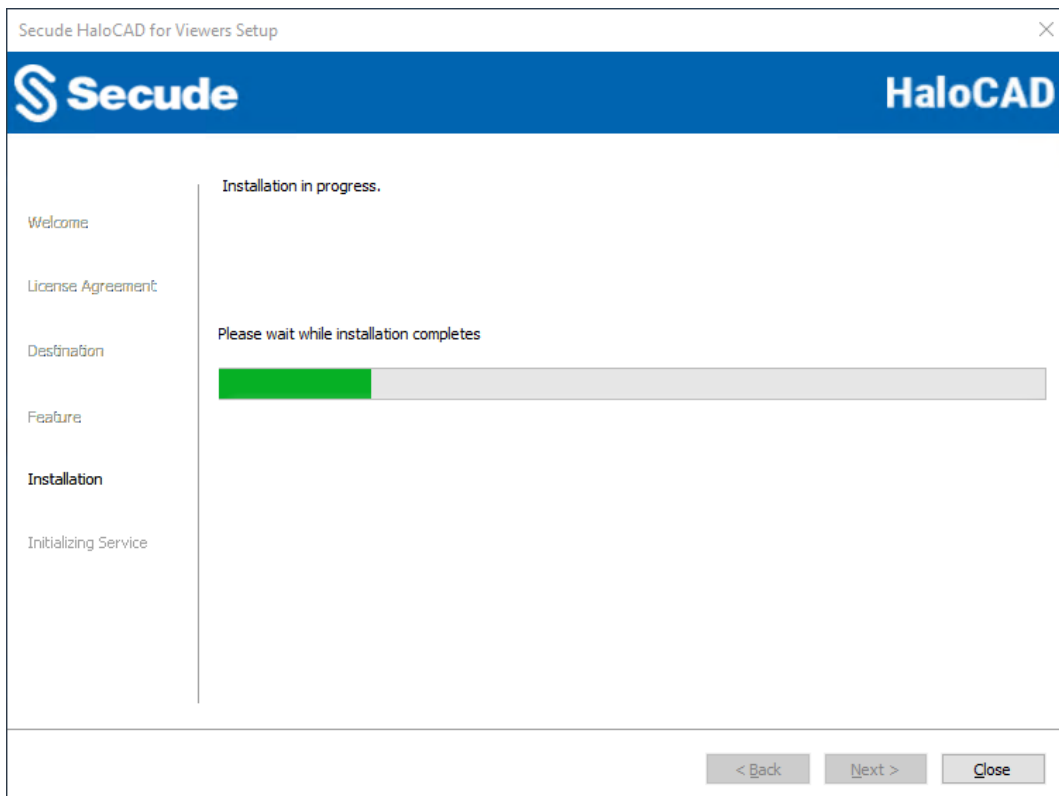
Destination folder selection dialog

8. By default, application files are stored in the program files directory (C:\Program Files\Secude\). If you would like to choose an alternate location, click the **Browse** button and select your location preference. When you are finished, click **Next**.
9. The feature selection dialog appears.



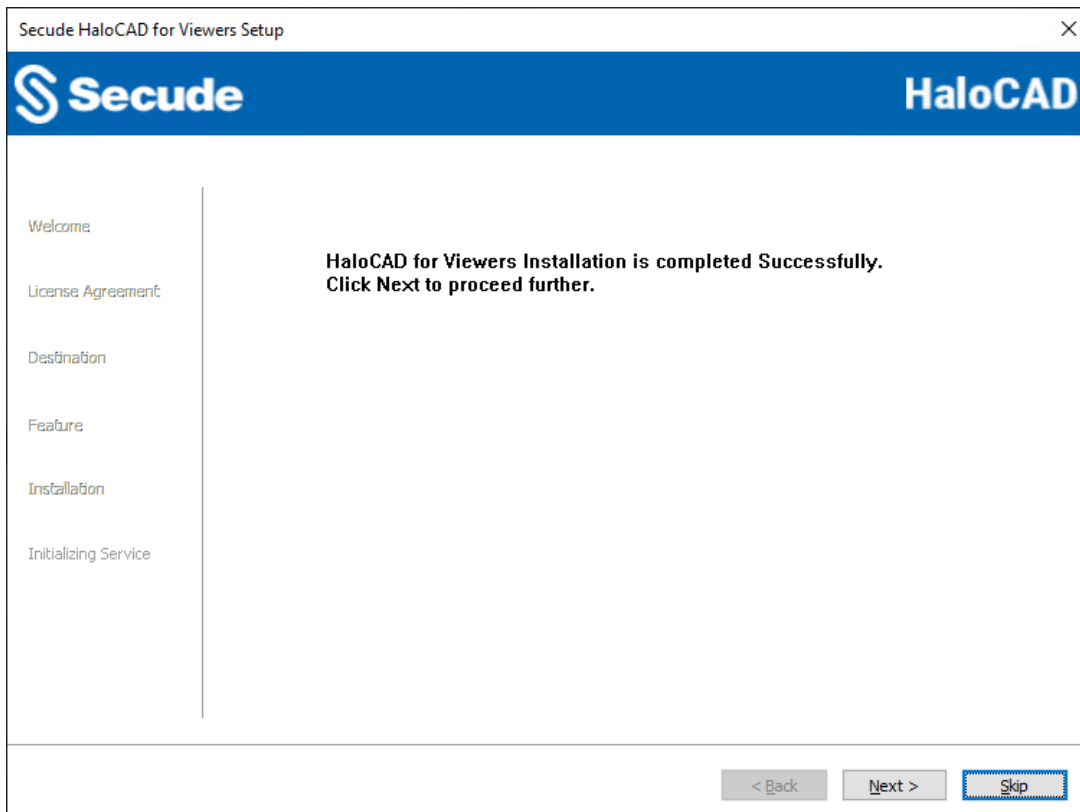
Feature selection dialog

10. The **Viewers Shield** option is selected by default.
11. To review or modify any installation settings, click **Back** to return to the previous screens. If you are ready to proceed, click **Next** to begin installing the application.
12. The installation begins, and the progress is displayed in the dialog.



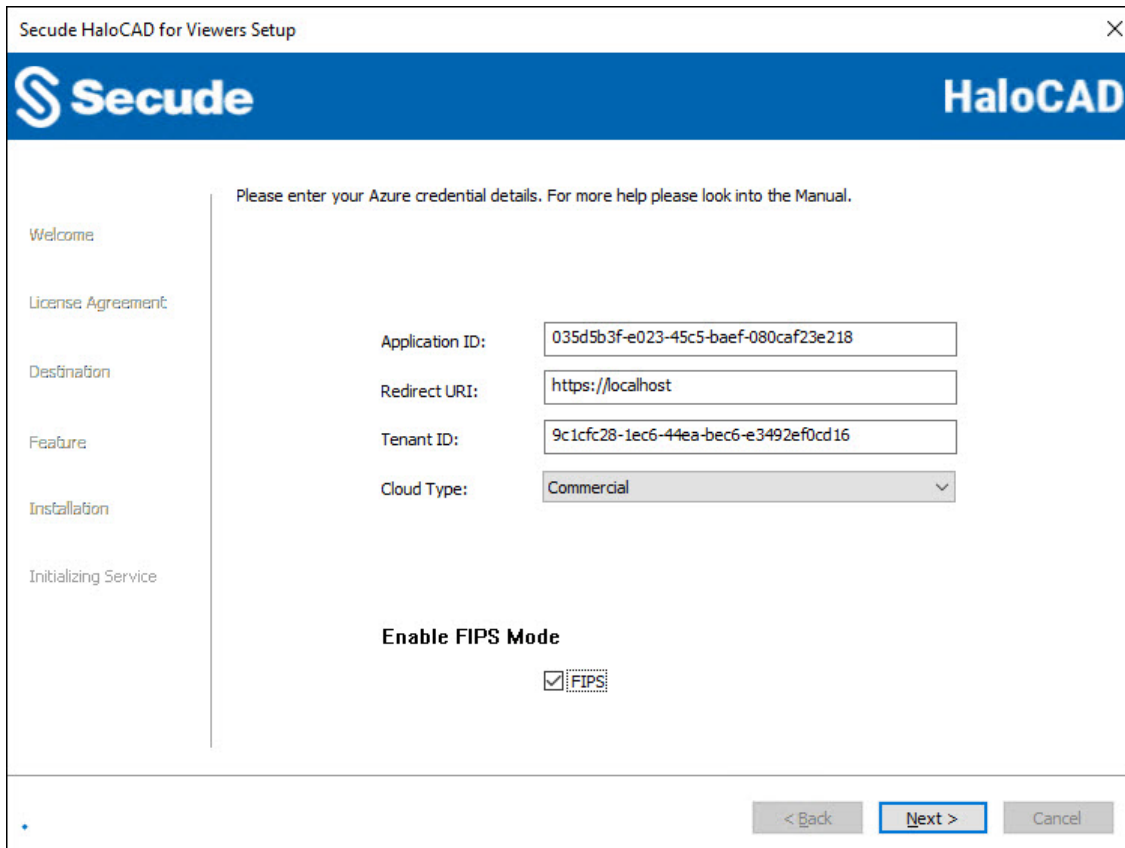
Installation progress dialog

- 13. When the installation is complete, a message appears confirming that the add-on has been successfully installed. Click **Next** to proceed.



Installation completed dialog

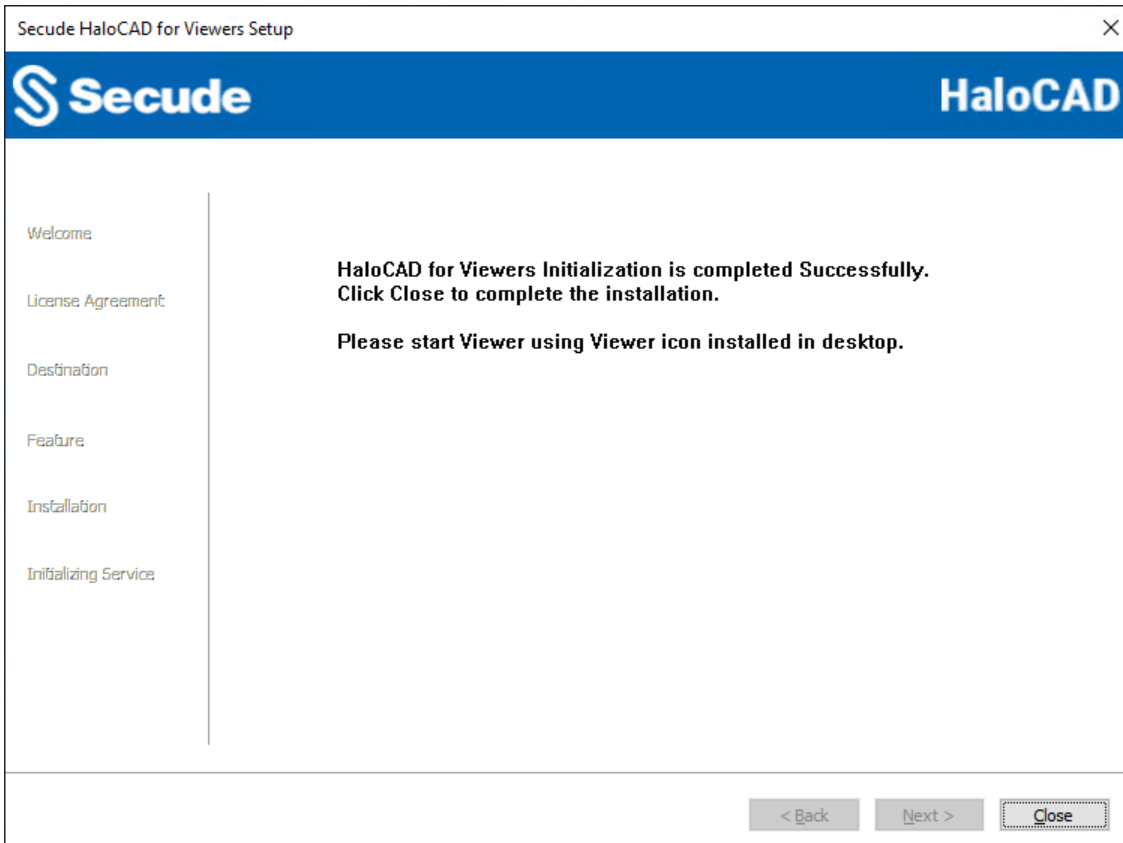
14. The initialization dialog appears. To prevent connectivity issues, ensure that the correct Microsoft Entra ID application details are entered on the screen. Note: If the `hc.conf.enc` file is included with the installer, this initialization screen is skipped and only the completion dialog is shown. The initialization screen appears only when the `hc.conf.enc` file is not present in the installer folder.




Initialization dialog

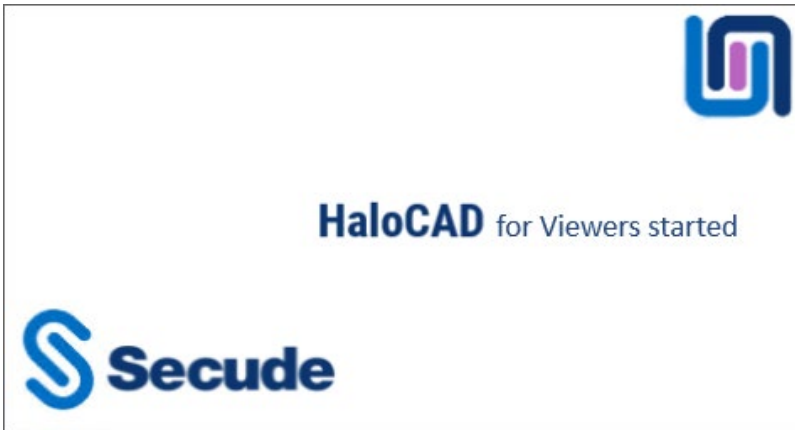
- a. **Application ID:** Enter the unique identifier of your registered application. For example, `v6ca776-c74e-437d-98ef-662ecb5751tt`
- b. **Redirect URI:** Enter the URI that was provided when registering the native application in the Azure portal. For example, `https://localhost`
- c. **Tenant ID:** If the registered application is **Single tenant**, you need to enter the globally unique identifier of your tenant if not, you can leave it empty. For example, `9c1cfc28-1ec6-44ea-bec6-e3492ef0cd16`.
- d. **Cloud Type: Commercial** is selected by default. Based on your Azure subscription and configuration, select the required cloud type from the list: Commercial, Custom, Germany, US_DoD, US_GCC, US_GCC_High, US_Sec, US_Nat, or China_01. If you select **Custom**, enter the appropriate URLs in the **Protection Cloud URL** (for example, `https://api.aadrm.com`) and **Policy Cloud URL** (for example, `https://dataservice.protection.outlook.com`) fields.

- e. **Enable Federal Information Processing Standards (FIPS) Mode:** Enable this option to use encryption algorithms that comply with FIPS standards. When enabled, MPIP uses only FIPS-compliant encryption algorithms, and when disabled, it uses standard encryption algorithms. If this option was not enabled during installation, it can later be enabled through a registry entry. For more details, please refer to the section "[Registry Settings](#)".
 - f. Click **Next**.
15. Once the initialization is completed, you will get the success message as shown below.



Initialization completed dialog

16. Click **Close** to close the installation wizard.
17. After installation, a shortcut icon  is created on the desktop. It is also loaded on the startup menu.
18. To launch the application, double-click the HaloCAD_Viewers icon or navigate to **All apps > HaloCAD_Viewers** from the **Start** menu. The startup dialog appears, as shown below.



Viewers Startup dialog

Note: The Viewers application starts automatically after a system restart or new login session; if it is already running, double-clicking the **HaloCAD_Viewers** icon displays the message “*HaloCAD for Viewer already running.*”

19. After you log in to the HaloCAD session and complete authentication through the **Microsoft Sign-In Assistant**, you can access the following log files:
 - a. HaloCAD logs at %AppData%\Roaming\Secude\HaloCAD\viewers\halocad.log
 - b. MIP SDK logs at %AppData%\Roaming\Secude\HaloCAD\viewers\mip\logs\mip_sdk.miplog

3.3.2. Silent Mode

In addition to the graphical mode, HaloCAD for Viewers can be installed in silent mode, which does not display a user interface and requires no user interaction. This provides a convenient way to streamline the installation by executing the command once.

1. Open the Command Prompt with elevated rights (Run as Administrator).
2. Navigate to the installer directory.
3. To know the list of options available in silent mode, follow the steps given below:

Type HaloCAD_Viewers_Shield_Setup.exe -help

Press Enter

Output

...

```
HaloCAD_Viewers_Shield_Setup.exe [-install [-viewersshield] [-dir
<destination_directory>]
```

```
[<ApplicationID> <Redirect URI> <TenantID/Name> <Cloud Type
```

```
("Commercial"|"Custom"|"Germany"|"US_DoD"|"US_GCC"|"US_GCC_High"|"US_Sec"|"US_Nat"|"China_01"|")>
```

```
[(if Custom) <Protection Cloud Url> <Policy Cloud Url>] [-enablefipsmode
```

<true|false>]

For Silent Mode Installation if ENC file already exists in the same location

```
HaloCAD_Viewers_Shield_Setup.exe [-install [-viewersshield] [-dir  
<destination_directory>] [-enablefipsmode <true|false>]]
```

```
HaloCAD_Viewers_Shield_Setup.exe [-uninstall -silent <true|false>]
```

4. The following command illustrates how to install the add-on using the Azure application details.

```
HaloCAD_Viewers_Shield_Setup.exe -install -viewersshield -dir "C:\Program  
Files\Secude" v6ca776-c74e-437d-98ef-662ecb5751tt https://localhost 9c1cfc28-1ec6-  
44ea-bec6-e3492ef0cd16 Commercial -enablefipsmode true
```

5. The example below shows how to install the add-on using the hc.conf.enc file located in the same installation location as mentioned.

```
HaloCAD_Viewers_Shield_Setup.exe -install -viewersshield -dir "C:\Program  
Files\Secude" -enablefipsmode true
```

6. Press Enter.

7. Installation is completed.

3.3.3. Via System Center Configuration Manager

Microsoft System Center Configuration Manager (SCCM) is an administrative tool that allows organizations to deploy operating systems and applications to Windows users efficiently and cost-effectively across their environment.

Using SCCM, the HaloCAD add-on can be deployed silently and automatically to specific target computers throughout the enterprise.

Before You Begin

1. Ensure that you have reviewed the prerequisites described in the Graphical Mode section.
2. We recommend adhering to best practices when creating a deployment procedure.
3. For guidance on preparing your environment, refer to the official Microsoft online documentation.

Deployment Using SCCM

This guide assumes that an SCCM environment is already configured. After configuration, you can use the silent mode commands described in the Silent Mode section to deploy the add-on.

3.4. Registry Settings

HaloCAD stores configuration settings in the Windows registry. This section describes the registry entries that can be configured. Do not modify any other settings.

Prerequisite: Make sure to back up the registry before making any changes, in case you need to restore it later.

Modify the Registry

To modify a registry value:

1. Open **Registry Editor**.
2. Navigate to: HKEY_LOCAL_MACHINE\SOFTWARE\Secude\HaLoCAD for Viewers
3. Locate the registry key that you want to update.
4. Modify the value as required.

Name	Default Value	Type	Description
log_enable	on	REG_SZ	<p>Defines the status of the log.</p> <ul style="list-style-type: none"> • On = Log file will be generated in the default location • Off = Log file will not be generated • Clean = Log files will be deleted. This parameter deletes only the logs and does not modify the log_enable to "Clean" from "on/off".
log_level	3	REG_SZ	<p>Log level information is logged in the haLocad.log file.</p> <ul style="list-style-type: none"> • Log level: 1: Error and Info • Log level: 2: Error, Warning, and Info • Log level: 3: Error, Warning, and Info • Log level: 4: Error, Warning, Info, and Debug
log_purge	7	REG_SZ	<p>It indicates removing files older than a defined time frame. By default, the log files older than 7 days will be deleted.</p>
log_rollover	100	REG_SZ	<p>Defines the log rollover time, i.e., a new log file will be generated based on the specified minute(s). By default, a new log file will be generated every 100 minutes.</p>
mipallowpii	false	REG_SZ	<p>Enable or disable the visibility of Personally Identifiable Information (PII) such as Email names and IP addresses in the MIP SDK logs.</p> <ul style="list-style-type: none"> • true—PII will be visible in clear text in the MIP SDK logs.

Secude

Name	Default Value	Type	Description
			<ul style="list-style-type: none">false (default)—PII will be masked with asterisks in the MIP SDK logs. This helps to protect the PII's confidentiality.
enable_fips	false	REG_SZ	Enable or Disable FIPS Mode <ol style="list-style-type: none">true: MPIP uses only FIPS-compliant encryption algorithms.false: MPIP uses standard encryption algorithms.

Registry value

Next Steps

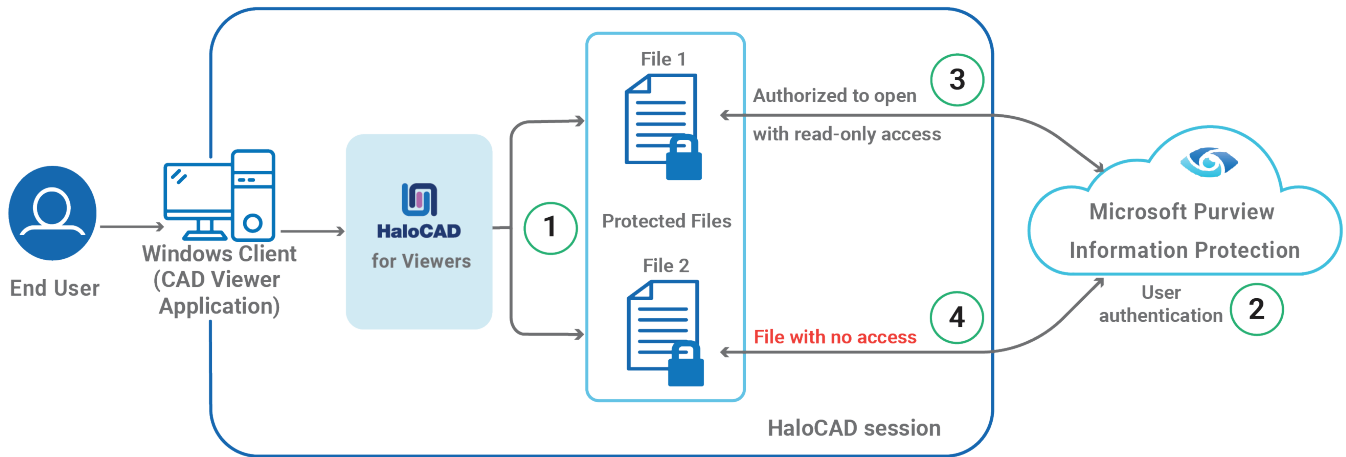
HaloCAD for Viewers has been successfully installed and initialized in your environment. You may now proceed to open protected files using the supported CAD Viewer applications. For additional information, please refer to the "[Operating Instructions](#)."

4. Operating Instructions

This section outlines key operations procedures for working with HaloCAD for Viewers.

4.1. How does it work?

At a high level, HaloCAD workflow involves the following steps:



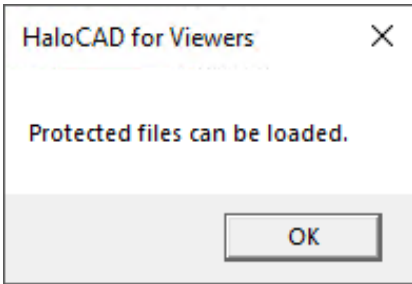
HaloCAD for Viewers

1. The user launches the CAD viewer application, after which HaloCAD loads and displays the message *“Protected files can be loaded.”* The user then selects two files protected by HaloCAD.
2. During the first HaloCAD session login, a connection to Microsoft Purview Information Protection is established, and Microsoft Entra ID authenticates the user.
3. The user is permitted to open File 1 with view-only access.
4. File 2 does not open because the user does not have the required permissions.

4.2. How to Open a Protected File in HaloCAD for Viewers?

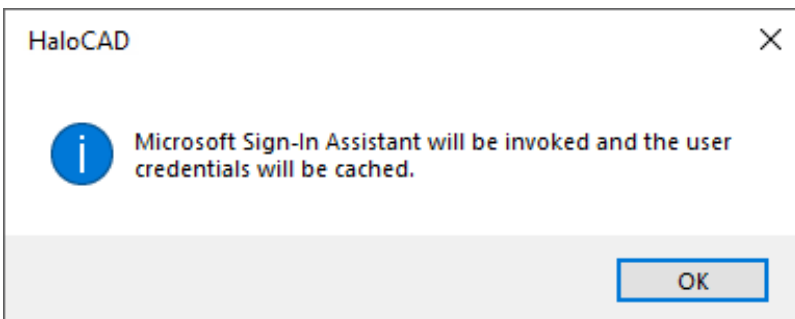
Prerequisite: Make sure that HaloCAD for Viewers is installed.

1. Open any supported Viewer application. For Example, Teamcenter Visualization Base.
2. HaloCAD for Viewers loads automatically whenever a viewer application is launched, and you will receive the following message.



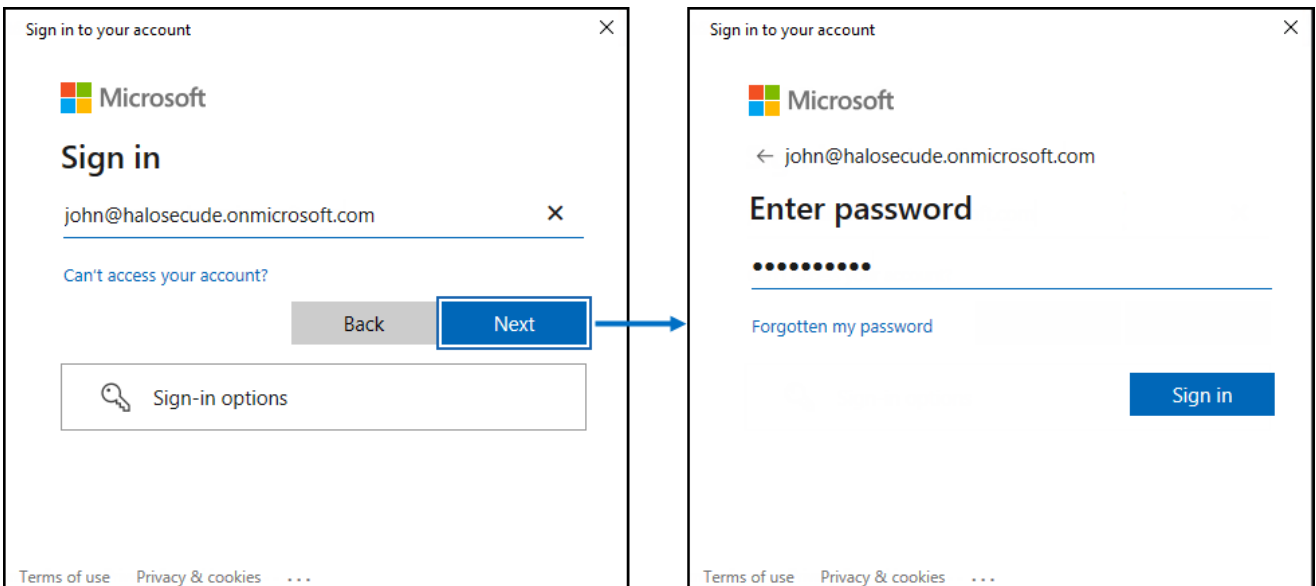
Protected files can be loaded

3. Click **OK**.
4. Open a HaloCAD-protected file using **File > Open**. When you log in to a HaloCAD session for the first time, you must connect to Microsoft Purview Information Protection. As a result, the HaloCAD Microsoft sign-in window prompts you to enter your credentials to start a new session.



Microsoft Sign-In Assistant invoking message

5. Click **OK**. Enter your credentials.



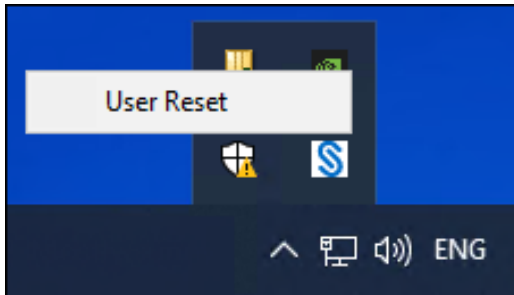
Authentication sign-in prompt

6. After successful verification, a connection is established with the Microsoft Entra tenant used during the initialization process.

Result: The file opens in view-only mode.

User Reset

After logging in to a HaloCAD session, the credentials are cached for easier access to Microsoft Purview Information Protection. To clear the cached credentials, select **Show hidden icons** on the taskbar, right-click the **Secude** icon, and choose **User Reset**.



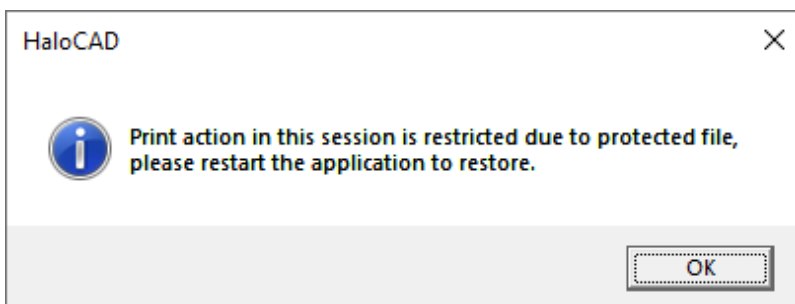
User Reset button

4.2.1. What Happens if You Try to Copy Data or Print Screen?

The most common ways to leak sensitive information are by copying it (Ctrl+C) or taking screenshots using **Print Screen (PrtScn)** or the Snipping Tool. When a viewer application is launched, **HaloCAD for Viewers** is automatically invoked and begins preserving the attributes of both protected and unprotected files. As a result, any attempt to copy content or capture a screenshot causes the displayed data to be blanked out.

4.2.2. What Happens if You Try to Export or Print?

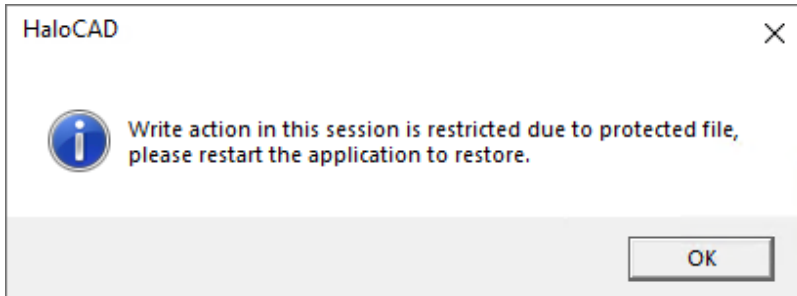
With View-only rights, you can only view the content, and other actions, such as printing, are restricted. Therefore, when you try to export the file using **Print > Microsoft Print to PDF**, the following warning message is displayed:



Warning message for the print action

4.2.3. What Happens if You Try to Write or Send the File via Email?

With View-only rights, you can only view the content, and other actions such as Email, Edit, Save, and Save As are restricted. Attempting to edit a file or send it via **File > Send > Email** will display the following warning message:



Warning message for the write or email action

Warning message in an unprotected file

It is designed in such a way that when opening a protected file, HaloCAD for Viewers does not allow exporting / editing / emailing data, even from an unprotected file. Therefore, please edit a file before opening a HaloCAD-protected file in a HaloCAD session.

HaloCAD for Viewers is designed to block exporting, editing, or emailing data whenever a protected file is opened, even if the file is unprotected. Therefore, ensure you complete any editing of a file before opening a HaloCAD-protected file in a HaloCAD session.

5. Technical Support

Before contacting Technical Support, ensure that you have the following information available.

Providing this information helps the support team investigate and resolve your issue more efficiently.

- Full contact details
- Product build version
- Date, time, and description of the error (include screenshots, if possible)
- Details of any third-party software used with the product
- Any additional information required to reproduce the issue

Contact Technical Support

Secude provides technical support through email support@secude.com. When contacting Technical Support by email, include your company details, a detailed description of the issue, and the relevant log files (if available). A support representative will respond to your inquiry.

Additional Resources

Visit the Secude website <https://secude.com> to learn about upcoming events, press releases, and to download white papers.

Documentation Feedback

Secude values your feedback and continuously strives to improve product documentation. To provide feedback, send an email to: documentation@secude.com

Include the following details in your feedback:

- Product name and version
- Documentation topic
- Description of the suggestion or error

The technical documentation team reviews all feedback and incorporates relevant updates in future documentation releases.

6. Appendix

This section provides supplemental information.

6.1. Third-Party Libraries

Third-party software/code is included or bundled with Secude's products according to its appropriate license. Secude conducts testing to make sure the third-party products are compatible with and perform as intended with Secude applications.

The third-party libraries and dependencies used by HaloCAD for Viewers are shown in the table below.

Library	Version	Source Code	License Link
Mhook	2.5.1	https://github.com/apriorit/mhook	https://github.com/apriorit/mhook#license
Boost	1.75.0	-	-
Protobuf Library	3.15.6	https://github.com/protocolbuffers/protobuf	https://github.com/protocolbuffers/protobuf/blob/master/LICENSE
OpenSSL	3.4.1	https://github.com/openssl	https://github.com/openssl/openssl/blob/master/LICENSE.txt
Rapidxml	1.13	https://sourceforge.net/projects/rapidxml/files/latest/download	http://rapidxml.sourceforge.net/license.txt
tbb	2021.6.0	https://github.com/oneapi-src/oneTBB	https://github.com/dwaddington/tbb-2018/blob/tbb_2018/LICENSE
MSAL	4.72.1	https://github.com/AzureAD/microsoft-authentication-library-for-dotnet	https://github.com/AzureAD/microsoft-authentication-library-for-dotnet/blob/master/LICENSE
ConfuserEx	1.0.0.0	https://github.com/yck1509/ConfuserEx	https://github.com/yck1509/ConfuserEx/blob/master/LICENSE
WTL	10.0.10320	https://www.nuget.org/packages/wtl/10.0.10320	https://opensource.org/licenses/cpl1.0.txt

Library	Version	Source Code	License Link
MIP SDK	1.18.103	https://learn.microsoft.com/en-us/information-protection/develop/version-release-history	https://docs.microsoft.com/en-us/information-protection/develop/

Third-party libraries

6.2. Uninstalling the HaloCAD for Viewers

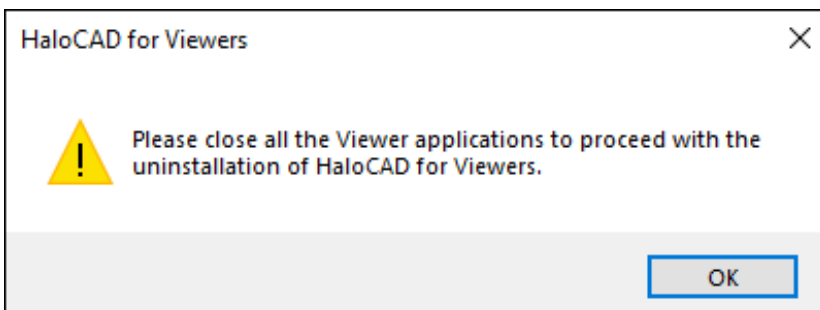
When you no longer use HaloCAD for Viewers, you may uninstall the application. Uninstalling removes all files and registry settings that were added to your computer during the initial installation.

Installer Version Requirement

When uninstalling the HaloCAD add-on, use the installer for the currently installed version, whether you run it by double-clicking the installer or from the command line. Using a different installer version may result in errors.

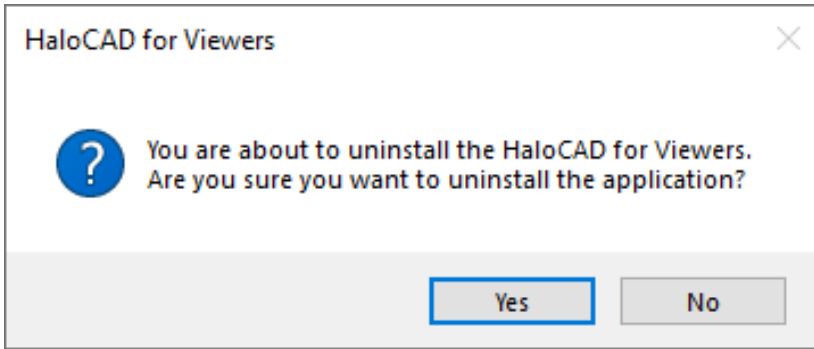
Method #1

1. Click **Start** menu > go to **Control Panel > Programs > Programs and Features > Uninstall a Program** > select **HaloCAD for Viewers** application from the list > right-click and select **Uninstall** option or double-click on the installer `HaloCAD_Viewers_Shield_Setup.exe` file.
2. Depending on your Windows security settings, you may get a security warning as "Do you want to allow the following program to make changes to this computer?". If you get this security warning, click the **Yes** button to confirm that you want to uninstall the add-on.
3. The HaloCAD installer checks the current user session for any supported CAD viewer applications running in the background and, if any are detected, displays the following message.



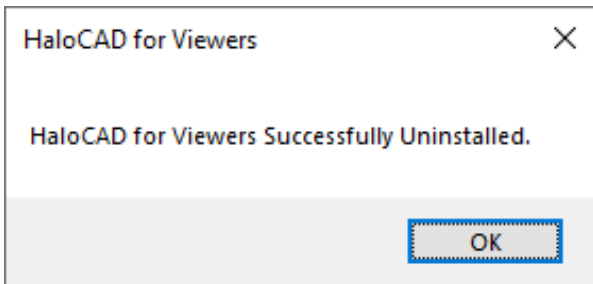
Uninstall Message #1

4. Click **OK** and close all HaloCAD-supported CAD viewer applications.
5. Redo [step 1](#), and the following confirmation message appears.



Uninstall Message #2

6. Click **Yes** to confirm the uninstallation of HaloCAD from your computer.



Uninstall Message #3

7. The HaloCAD component has been successfully uninstalled. Click **OK** to close the dialog box.

Method #2

The following is an example of uninstalling HaloCAD for Viewers using the command line.

1. Open a command prompt.
2. Navigate to the directory of the add-on installer.

Example: HaloCAD_Viewers_Shield_Setup.exe -uninstall -silent true

3. The uninstalling process is complete.

Index

A		Microsoft-entra-tenant.....	1
	Application_id.....	Mpip	1
	Azure.....		
C		P	
	Cad-viewer.....	Pii.....	1
	Cloud-type		
J		R	
	Json	Redirect_uri.....	1
M		S	
	Microsoft_intra_id.....	Sccm	1



www.secude.com

About Secude

Secude, a trusted Microsoft and Siemens Digital Industries Software partner, is a global leader in Zero Trust data protection and data governance.

Our solutions extend Microsoft Purview Information Protection (MPIP) to secure sensitive files—including CAD and PLM assets—from the moment of creation. By embedding persistent protection and access controls directly into design and engineering data, we help enterprises prevent Intellectual Property (IP) theft, data leakage, reputational damage, and compliance risks. With operations in Europe, North America, and Asia, Secude supports global manufacturers, defense contractors, and AEC firms in implementing robust IT security strategies across the product lifecycle and digital supply chain.