



HaloCAD

HaloCAD for Autodesk Vault

Operations Manual

Version 2.8

Copyright

© 2025-2026 Secude Solutions AG. All Rights Reserved.

This Secude-branded software and its corresponding documentation are the exclusive property of Secude Solutions AG of Luzern, Switzerland and are protected under the various copyright laws around the world and by various other intellectual property laws. The use of this software and/or its documentation and any copying thereof by end users is subject to the terms of a license agreement with Secude Solutions AG. The wrongful use or copying of this software and/or documentation subjects infringers to both criminal and civil liabilities.

ANY USE, COPYING, REPRODUCTION, ALTERATION, TRANSMISSION, OR TRANSLATION OF THESE MATERIALS, IN WHOLE OR IN PART, IN ANY FORM OR BY ANY MEANS, IS STRICTLY PROHIBITED WITHOUT THE PRIOR WRITTEN PERMISSION OF SECUDE SOLUTIONS AG. IF THIS MATERIAL IS PROVIDED WITH SOFTWARE LICENSED BY SECUDE, THE INFORMATION HEREIN IS PROVIDED SUBJECT TO THE TERMS OF THE WARRANTY PROVIDED WITH THE PRODUCT LICENSE. IF THIS MATERIAL IS NOT PROVIDED WITH LICENSED SOFTWARE, THE INFORMATION HEREIN IS PROVIDED "AS IS" WITHOUT WARRANTY OF ANY KIND. IN EITHER CASE, THERE ARE NO OTHER WARRANTIES, EITHER EXPRESS OR IMPLIED, INCLUDING, BUT NOT LIMITED TO THE IMPLIED WARRANTIES OF MERCHANTABILITY, FITNESS FOR A PARTICULAR PURPOSE, NONINFRINGEMENT, OR QUALITY. IN NO EVENT SHALL SECUDE SOLUTIONS AG OR ANY OF ITS AFFILIATES BE LIABLE FOR ANY DIRECT OR INDIRECT, SPECIAL, INCIDENTAL, CONSEQUENTIAL, PUNITIVE, OR EXEMPLARY DAMAGES ARISING OUT OF THE USE OR INABILITY TO USE THE MATERIALS AND/OR INFORMATION CONTAINED HEREIN. Some jurisdictions do not allow the exclusion of implied warranties, so the above exclusion may not apply to you.

Secude Solutions AG takes reasonable measures to ensure the quality of the data and other information produced herein. However, these materials may contain technical inaccuracies or typographical errors, and are not guaranteed to be error-free. Information may be changed or updated without notice. Secude Solutions AG has no obligation to update these materials based on changes to its products or services or those of third parties. Secude Solutions AG may also make improvements or changes to the products or services described in this information at any time without notice. Secude Solutions AG frequently releases new versions and updates to its software, and therefore images shown in this document may be slightly different from what you see on screen.

As with any security product, Secude Solutions AG highly recommends the back up of data as well as passwords on a regular basis. Secude Solutions AG is not responsible for the loss of passwords or data that cannot be retrieved based upon a user's failure to adhere to stringent backup and safe-keeping conventions.

Contact

Secude Solutions AG
Murbacherstrasse 19
6003 Luzern, Switzerland
Mail: info@secude.com

Support

Web: <https://support.secude.com>
Mail: support@secude.com

Table of Contents

1. ABOUT THIS MANUAL	1
2. HOW DOES IT WORK?	2
3. HOW TO PROTECT A CAD FILE?	4
3.1. Download a Protected File	7
3.2. Block a File Download	8
4. COMMON SCENARIOS	9
4.1. Open a Protected CAD File.....	9
4.2. Integrate with the AutoCAD Application	9
4.2.1. Example 1: Application ID as the Owner of the File	9
4.2.2. Example 2: Static Email as the Owner of the File.....	10
4.2.3. Example 3: User as the Owner of the File	11
4.3. Integrate with the Inventor Application	12
4.3.1. Example 1: Application ID as the Owner of the File	12
4.3.2. Example 2: Static Email as the Owner of the File.....	13
4.3.3. Example 3: User as the Owner of the File	14
4.4. Integrate with MS Office Applications (File Upload and Download)	15
5. TECHNICAL SUPPORT	17

Typographic Conventions

This guide uses the following typographic conventions to distinguish types of in-text information and icons to alert you to important information.

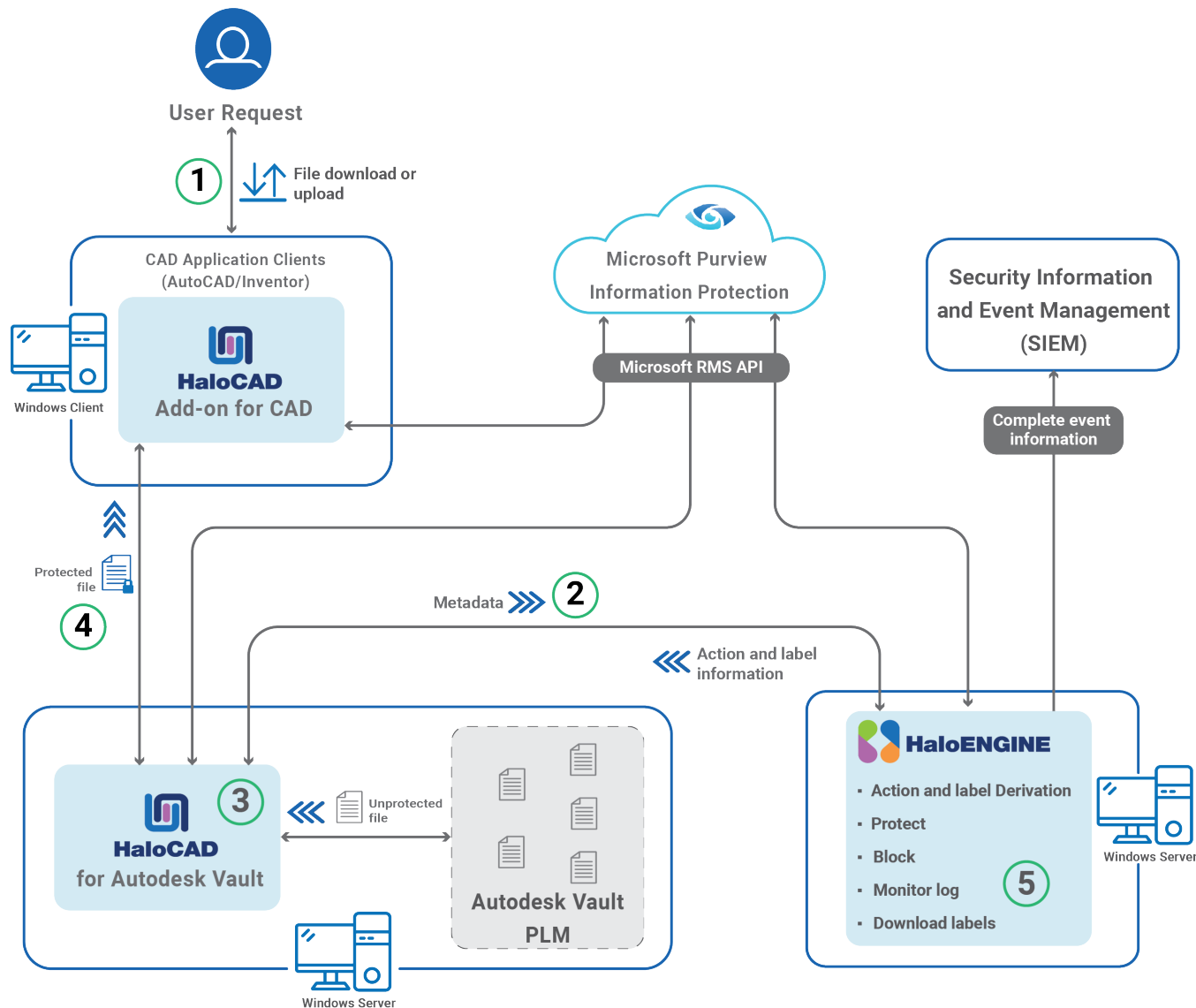
Convention	Description
Boldface type	<ul style="list-style-type: none">• Items you must select, such as menu options, command buttons, or items in a list.• Titles of sections, sub-sections, etc.
<i>Italic type</i>	<ul style="list-style-type: none">• To emphasize a word• Error messages• Table and Figure captions
Consolas Font	<ul style="list-style-type: none">• Package names• Filenames and directory names• XML element names and attribute names• Parameters• File type• Code examples <p>Example:</p> <pre>hesadm.exe start -user <domain\user> -pwd <password></pre>
Hyperlink	Provides quick and easy access to cross-referenced topics. Hyperlinks are highlighted in blue and underlined.
Admonitions	<div data-bbox="416 1171 1394 1279" style="border: 1px solid yellow; padding: 5px;"><p>Note Provides additional information relevant to the topic.</p></div> <div data-bbox="416 1335 1394 1518" style="border: 1px solid red; padding: 5px;"><p>Warning Contains information about circumstances, parameters, and so on that MUST be fulfilled. Failure to comply will have consequences for the current operation.</p></div> <div data-bbox="416 1574 1394 1682" style="border: 1px solid green; padding: 5px;"><p>Tip Contains useful information about the operation of the application.</p></div> <div data-bbox="416 1738 1394 1883" style="border: 1px solid blue; padding: 5px;"><p>Info Contains information, guidelines, or suggestions for performing tasks more effectively.</p></div>

1. About this Manual

This manual provides comprehensive guidelines and step-by-step instructions for working with HaloCAD solutions (Monitor and Protect). For installation and configuration instructions, please refer to the "Installation Manual" shipped with the product package.

2. How does it work?

At a high level, the HaloCAD for Autodesk Vault workflow comprises the following steps:



HaloCAD for Autodesk Vault

Step 1: User File Selection (Check-out / Check-in)

1. The user creates a new CAD or Office document or opens an existing workspace object from the client.
2. The user performs a check-out (download) or check-in (upload).

Step 2: Request Monitoring and Interception

1. HaloCAD for Autodesk Vault intercepts every file the user attempts to download, retrieves it from the PLM Vault, and collects its associated metadata.

2. The metadata is sent to HaloENGINE, which evaluates the configuration, determines the required action and label, and returns this information to HaloCAD for Autodesk Vault.

Step 3: Encryption / Decryption

HaloCAD for Autodesk Vault carries out actions based on the provided action and label:

1. If no valid action exists, the file is downloaded without modification.
2. During check-in, if a valid action with a label is identified, the label is removed, and the decrypted file is stored in Autodesk Vault PLM.
3. During check-out, if a valid action with a label is identified, the label is applied. Protection is performed based on the configured mode:
 - a. **File Mode (Path-Based Processing):** The file path is sent to the HaloCAD Tomcat service for direct protection.
 - b. **Stream Mode (Direct Stream Processing):** The file content is sent as a byte stream to the HaloCAD Tomcat service for protection.
4. If a block rule is configured in HaloENGINE, HaloCAD for Autodesk Vault prevents the download.

Step 4: Processed File Delivery

The encrypted file with the assigned label is delivered to the user through the client application.

Step 5: Monitoring and Audit Log

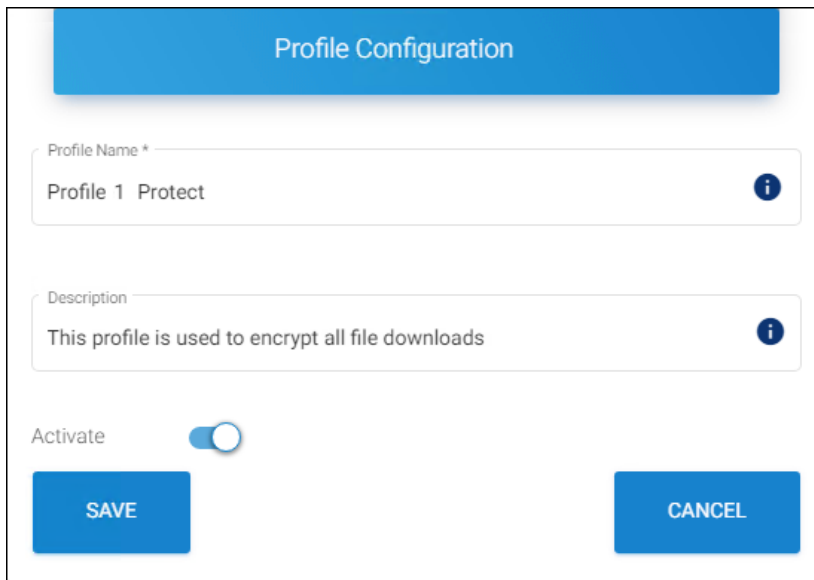
HaloCAD for Autodesk Vault records event details and forwards them to the HaloENGINE monitor log.

3. How to Protect a CAD File?

This section describes how to protect AutoCAD, Inventor, and Office files via PLM. Note: We recommend referring to the "Operations Manual of HaloCAD Add-on for AutoCAD/Inventor" to know more about standalone HaloCAD protection scenarios.

Fulfill the Requirements

1. HaloCAD for Autodesk Vault must be installed and configured.
2. HaloENGINE must be installed and configured.
3. The Classification Engine must be configured. For illustration purposes, a simple classification profile is explained here.
 - a. Step 1: Enter a name for the profile.



Sample profile

- b. Step 2: Configure classification properties and their values.

Classification Schema Configuration

Property Name *
Sensitivity i

Property Value i +

Enable tree structure

Secret	
Confidential	
Internal	

Default Property Value *
Secret ▼

Deactivate Property

SAVE CLOSE

Classification properties

- c. Step 3: Create classification rules based on metadata types. Note: If you want to use your metadata, specify it on the Custom Metadata page of the HaloENGINE admin portal. Please refer to the Custom Metadata section of the HaloENGINE Installation and Configuration manual.

Secude

Download Classification Rules

Note: Any change in the Download Classification Rules requires "RELOAD CONFIGURATION".

Property List:
Choose a property

Overview:
Priority of rules is from top to bottom

Sensitivity

Countries

Departments

Sensitivity.Confidential

VAULT.folder_name == Designs

+

✎

🗑

⬆

⬇

Rules

- d. Step 4: Create an action rule to label and block.

ACTION RULE OVERVIEW

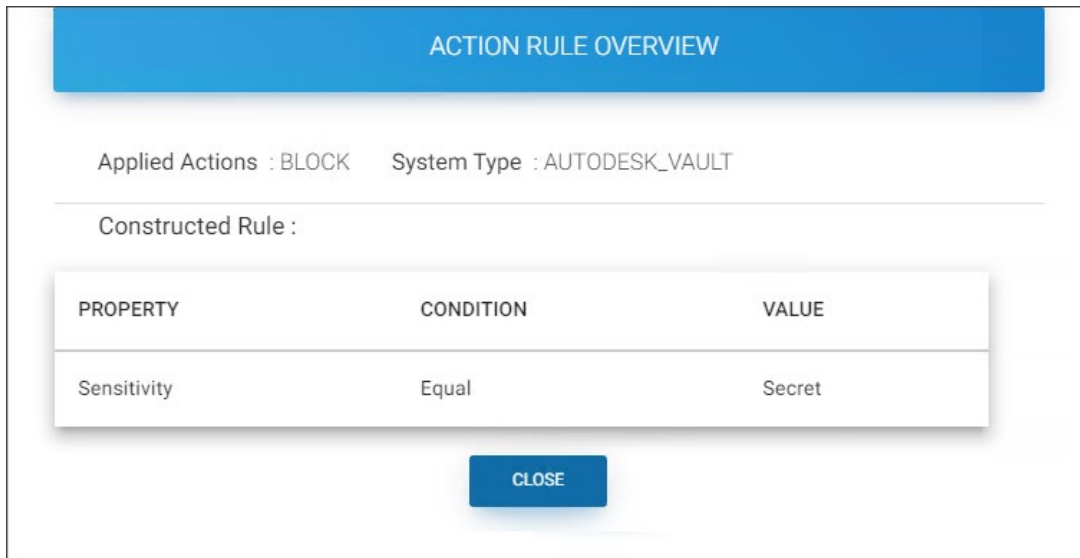
Applied Actions : LABEL System Type : VAULT Label Name : HCAD Confidential

Constructed Rule :

PROPERTY	CONDITION	VALUE
Sensitivity	Equal	Confidential

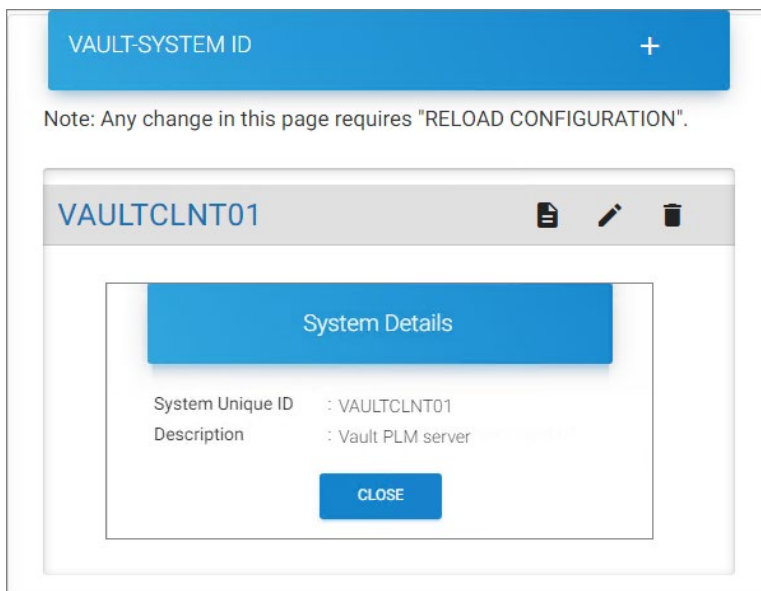
CLOSE

Action rule for labeling



Action rule for blocking

- e. Step 5: Assign Systems to the profile.



Assign Systems

- 4. HaloCAD add-on must be installed.

3.1. Download a Protected File

Files can be exported from the Autodesk Vault server using multiple methods. The following options describe how to download (check out) a file using different clients and applications.

Option 1: Autodesk Vault Professional Client

1. Log in to the **Autodesk Vault Professional Client** (Standalone Vault Client).
2. In the **Project Explorer** screen, navigate to the required folder.

3. Select a file.
4. Right-click the file and select **Get** to download it.

Option 2: Autodesk Vault Thin Client

1. Open the **Autodesk Vault Thin Client**.
2. Select the workspace.
3. Click **Sign In** and enter your credentials.
4. Navigate to the required folder.
5. Select the file.
6. Download the file using one of the following options:
 - Click the **three dots** menu.
 - Click the **Download** button.

Option 3: AutoCAD or Inventor Application

1. Open the **AutoCAD** or **Inventor** application.
2. Go to the **Vault** tab.
3. Click **Log In** and enter your credentials.
4. Click **Open**.
5. Select a file to download.

Results

- The downloaded file is labeled according to the configuration in HaloENGINE.
- The label-based encryption settings are enforced and remain with the file regardless of its storage location.
- All upload and download events are recorded in the HaloENGINE audit log, regardless of file protection status.

3.2. Block a File Download

1. Log in to the **Autodesk Vault Professional Client**.
2. In the **Project Explorer** screen, navigate to the required folder.
3. Attempt to download a file. Note: You can also attempt to download the file using any other supported method.

Results

- The block action rule configured in HaloENGINE prevents the file from being downloaded.
- No file is downloaded.
- Refer to the HaloENGINE Monitor log file for additional details.

4. Common Scenarios

This section presents some common scenarios for illustrative purposes and provides general guidelines.

4.1. Open a Protected CAD File

Prerequisite: Ensure that the HaloCAD Add-on is installed before opening a protected file.

1. Double-click the protected file to open it.
2. When you open a labeled file for the first time, the system prompts you to connect to the Microsoft Entra tenant using the **Microsoft Sign-In Assistant**.
3. Click **OK** when prompted that the Microsoft Sign-In Assistant will be invoked and user credentials will be cached.
4. Follow the on-screen instructions to complete the authentication process.

Results

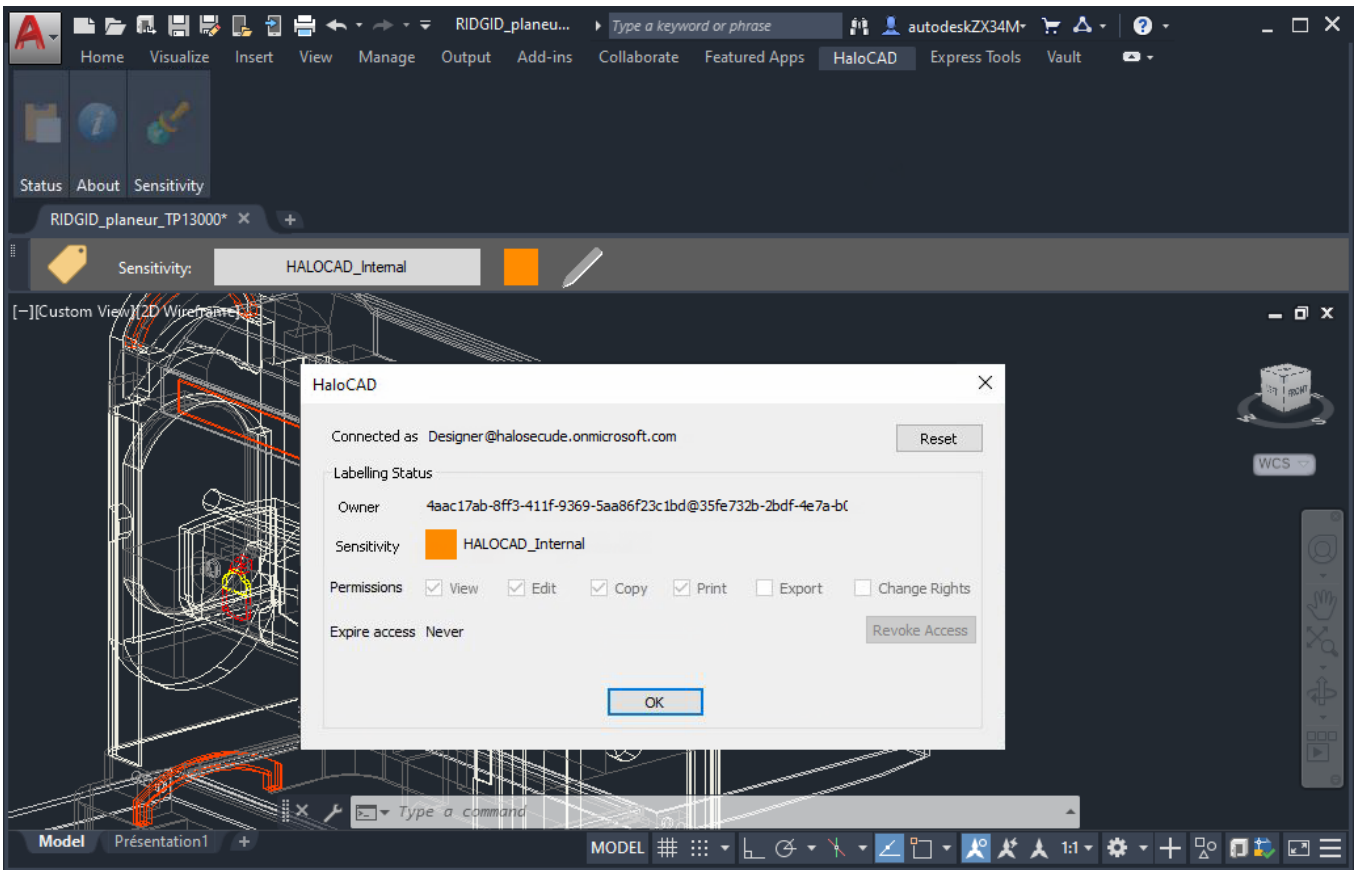
- After successful authentication, the file opens.
- Access to the document may vary depending on the configured policy settings.
- For more information about access behavior, refer to the Operations Manual of the respective add-ons.

4.2. Integrate with the AutoCAD Application

Below are some examples of the functionality of HaloCAD in the AutoCAD application.

4.2.1. Example 1: Application ID as the Owner of the File

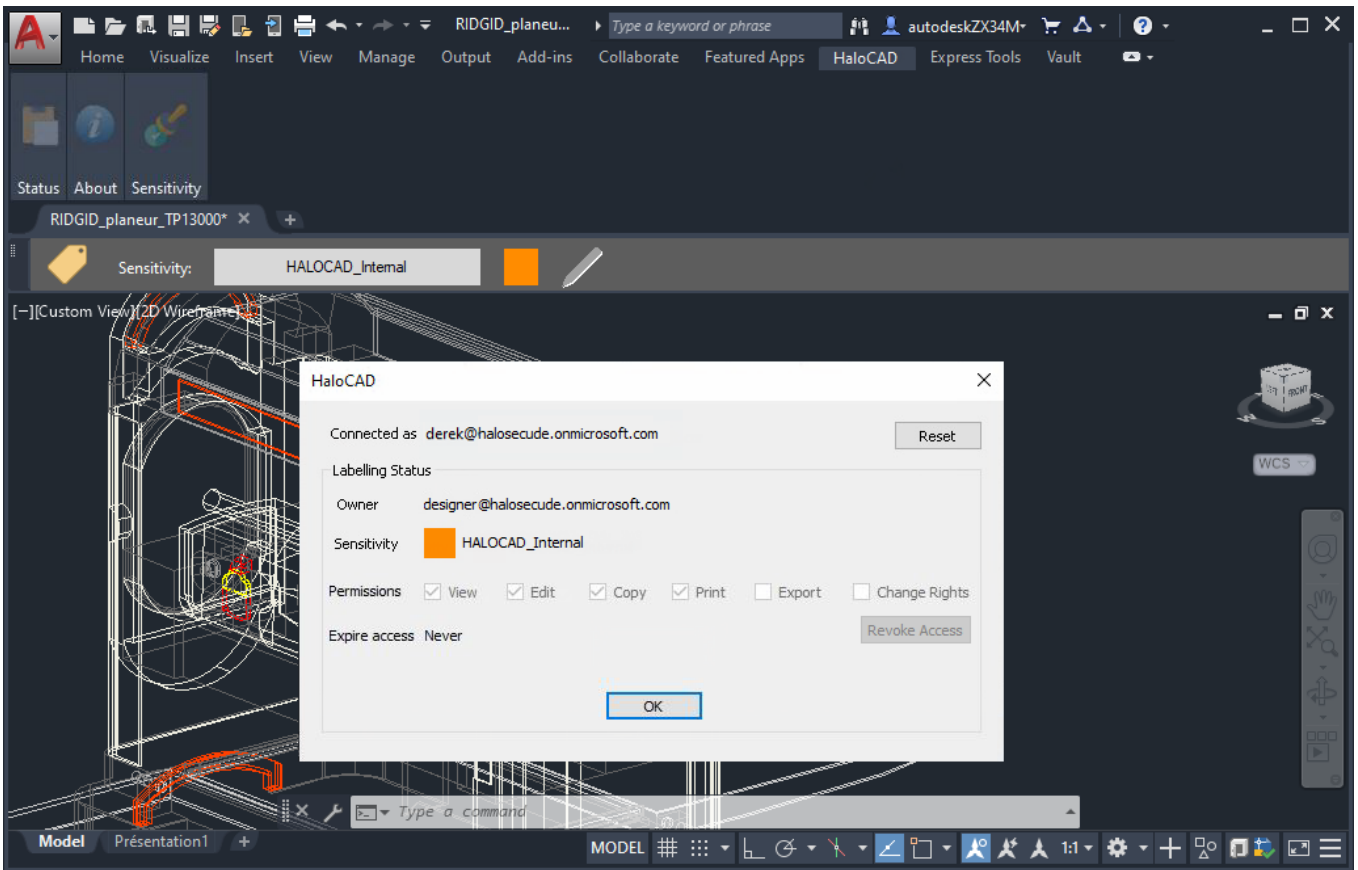
The following figure shows an example of an Application ID that is used to initialize the HaloENGINE. This Application ID will be the owner of the document by default, however, a static email can also be an owner of the downloaded file if specified in the HaloENGINE. Please refer to example 2.



Application ID as the owner of the file

4.2.2. Example 2: Static Email as the Owner of the File

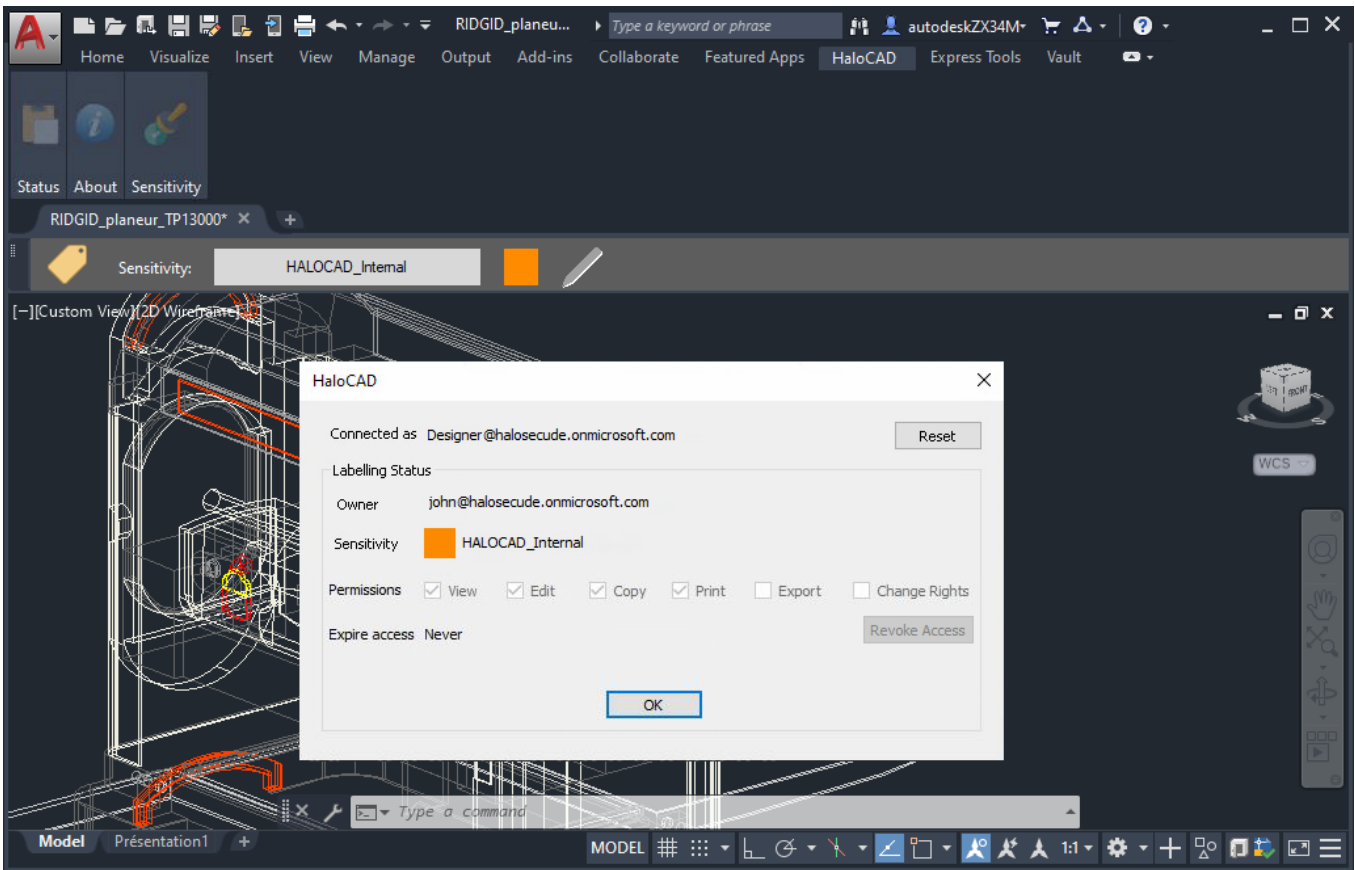
The following figure shows an example of an email address configured in the HaloENGINE. This email address will be the owner of the exported document.



Static Email as the Owner of the File

4.2.3. Example 3: User as the Owner of the File

The following figure shows an example of a PLM logged-in user who has become the owner of the document. To achieve this, the Owner configuration must be set to "user" on the HaloENGINE Admin portal. The exported document will have the email address of the currently logged-in user as its owner.



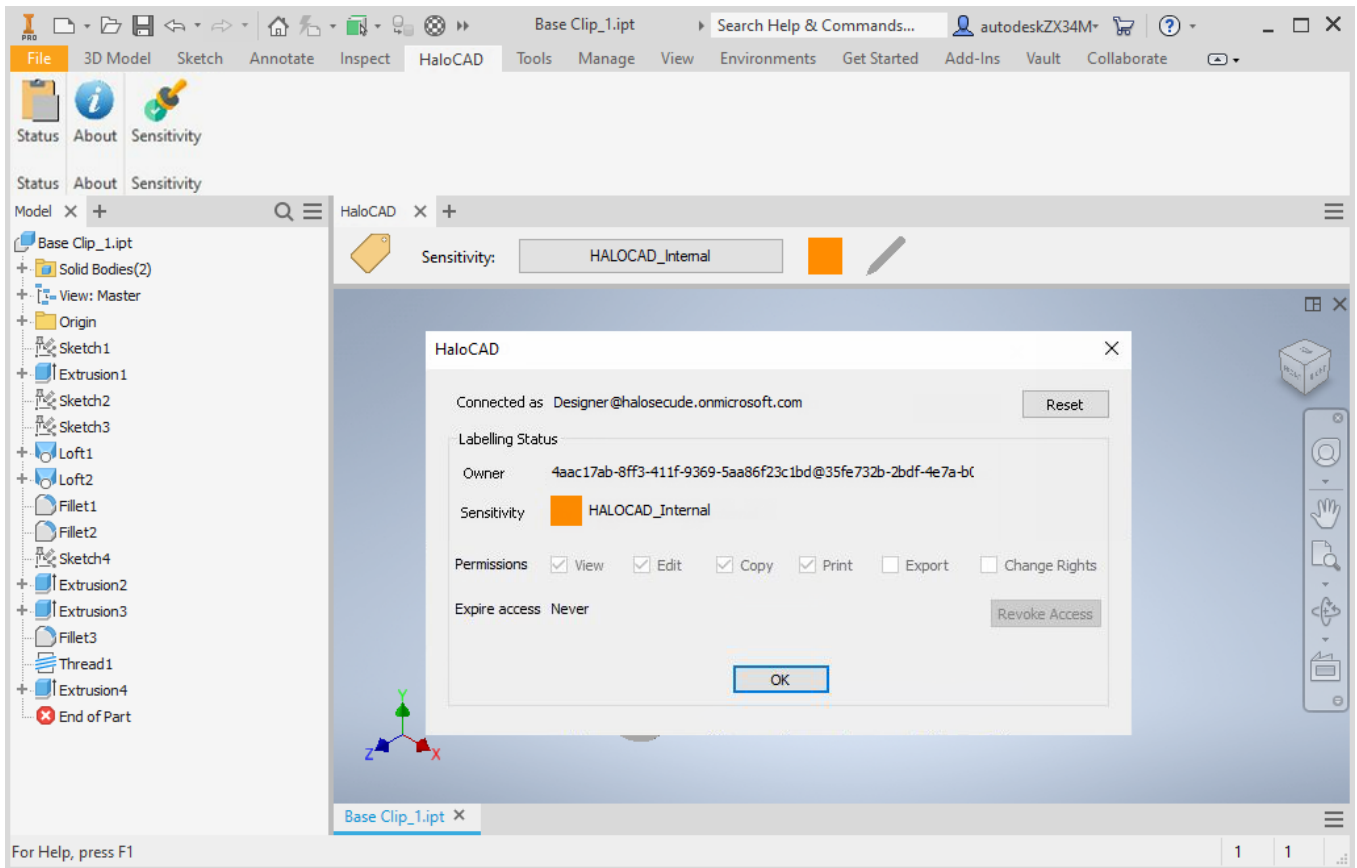
User as the Owner of the File

4.3. Integrate with the Inventor Application

Below are some examples of the functionality of HaloCAD in the Inventor application.

4.3.1. Example 1: Application ID as the Owner of the File

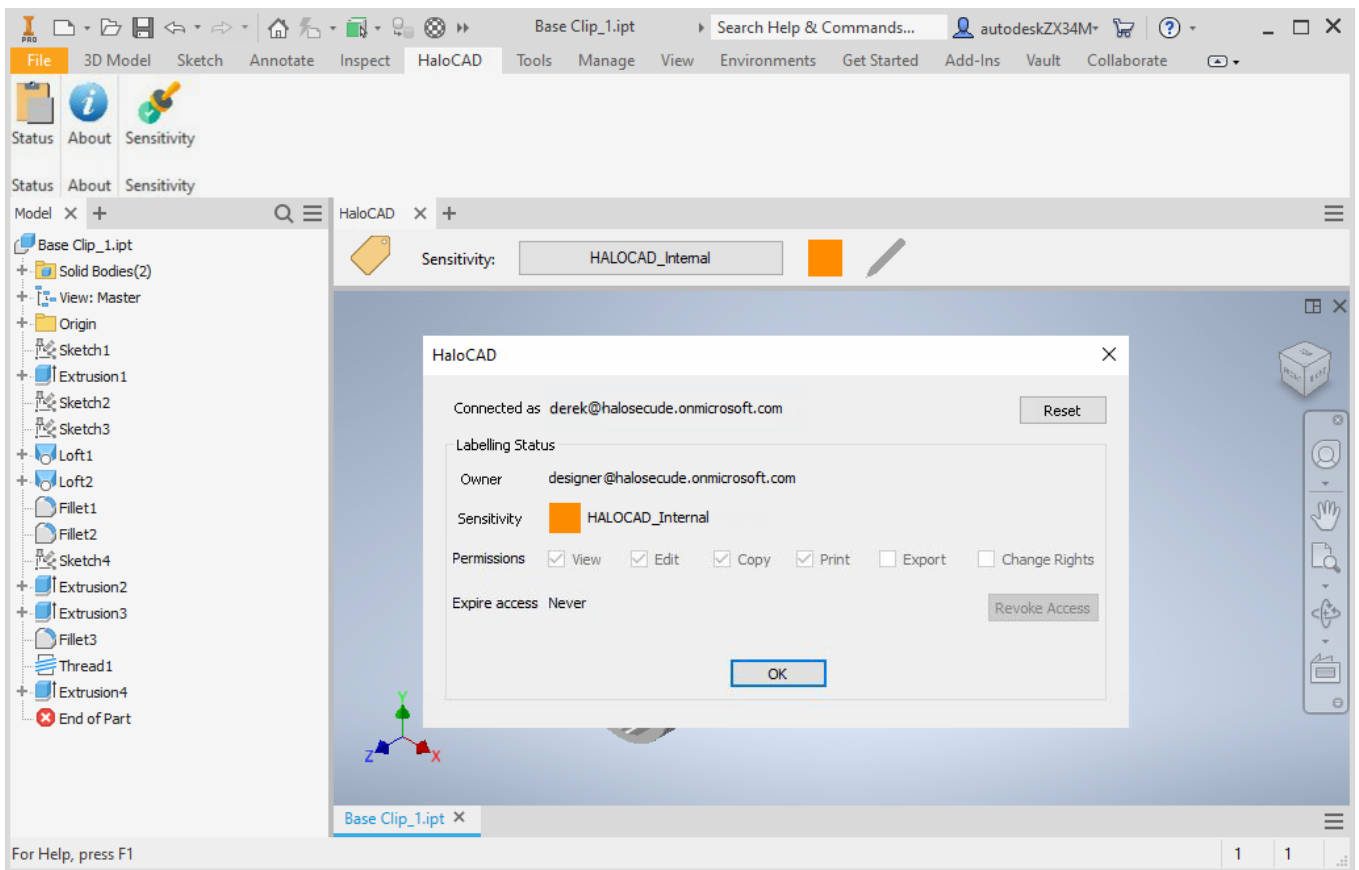
The following figure shows an example of an Application ID that is used to initialize the HaloENGINE. This Application ID will be the owner of the document by default, however, a static email can also be an owner of the downloaded file if specified in the HaloENGINE. Please refer to example 2.



Application ID as the owner of the file

4.3.2. Example 2: Static Email as the Owner of the File

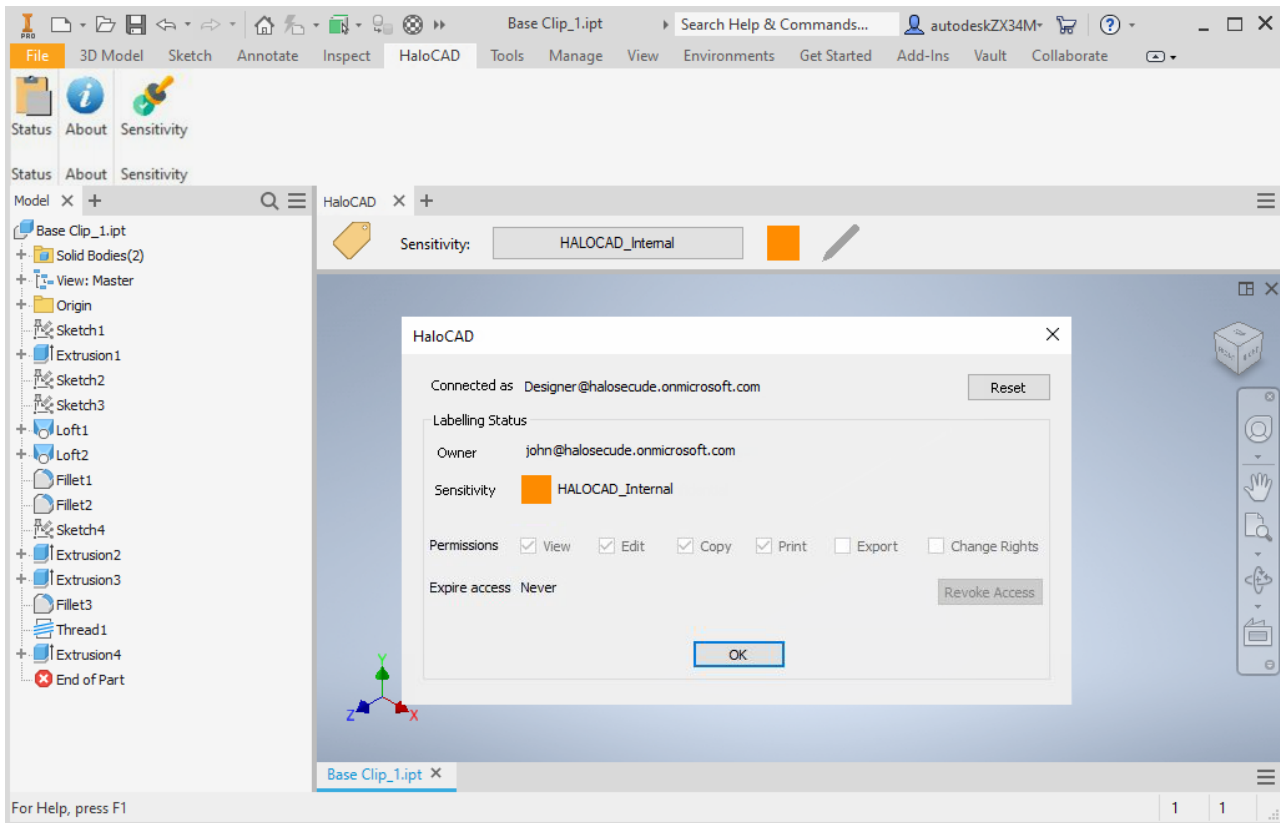
The following figure shows an example of an email address configured in the HaloENGINE. This email address will be the owner of the exported document.



Static Email as the Owner of the File

4.3.3. Example 3: User as the Owner of the File

The following figure shows an example of a user whose name is configured in the HaloENGINE. This user is considered the owner of the document. In case the user who logged in to Autodesk Vault PLM Server does not have an email ID, then the Application ID (which is used to initialize HaloENGINE) will be the owner of the document.



User as the Owner of the File

4.4. Integrate with MS Office Applications (File Upload and Download)

The following example describes the upload and download sequence in Autodesk Vault PLM integrated with HaloCAD. Although non-Office files (for example, .txt and .pdf) are also supported, this procedure uses an Excel file for illustration.

Upload a File (Check-in Sequence)

1. Create a new Microsoft Office file (Word or Excel).
2. Select a label from the **Sensitivity** ribbon.
3. Click **Save**.
4. Alternatively, open an existing protected file. Note: In this example, the file (Bill of Materials.xlsx) is already protected with the **HALOCAD_INTERNAL** label.
5. Go to the **Autodesk Vault** tab.
6. Click **Log In** and enter your credentials.
7. Click **Check-in**.
8. Select the destination folder in Autodesk Vault Server.
9. The **Check-in** dialog box appears.
10. Select the **Close files and delete working copy** check box.

11. Click **OK**.
12. When prompted, "Do you wish to delete the file xxxxx.xlsx from its original location 'C:\xxxx\xxxx\xxxx'?" click **Yes** or **No**.

Results

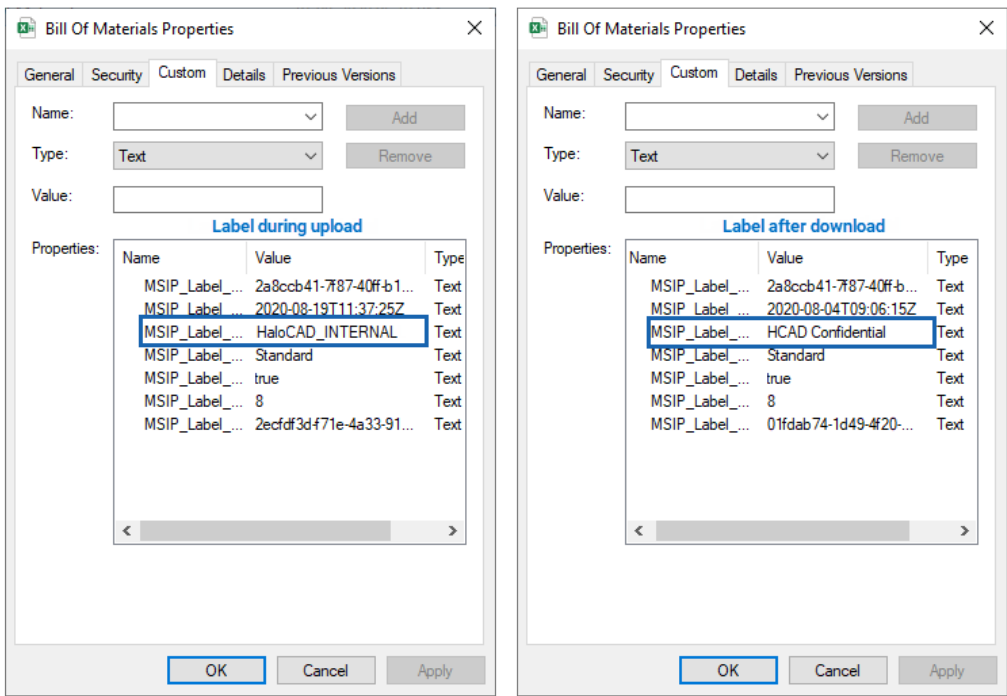
- During the upload (check-in) process, the original label is removed.
- The decrypted file is stored (checked in) in Autodesk Vault PLM.
- The upload (check-in) event is logged in the HaloENGINE Monitor log file.

Download the File (Check-out Sequence)

1. Go to the **Autodesk Vault** tab.
2. Click **Open**.
3. Select the previously uploaded file from the Vault server.
4. Click **Open**.
5. When prompted, "File S/xxxxx/logs/xxx.xlsx is not checked out. Do you want to check it out now?"
6. Click **Yes** to check out the file directly
7. Alternatively, click **No**, and then click **Check-out** from the **Autodesk Vault** tab.

Results

- During the download (check-out) process, the file is exported from Vault with a new label defined in HaloENGINE.
- The download (check-out) event is logged in the HaloENGINE Monitor log file.



File upload and download Sequence

5. Technical Support

Before contacting Technical Support, ensure that you have the following information available.

Providing this information helps the support team investigate and resolve your issue more efficiently.

- Full contact details
- Product build version
- Date, time, and description of the error (include screenshots, if possible)
- Details of any third-party software used with the product
- Any additional information required to reproduce the issue

Contact Technical Support

Secude provides technical support through email support@secude.com. When contacting Technical Support by email, include your company details, a detailed description of the issue, and the relevant log files (if available). A support representative will respond to your inquiry.

Additional Resources

Visit the Secude website <https://secude.com> to learn about upcoming events, press releases, and to download white papers.

Documentation Feedback

Secude values your feedback and continuously strives to improve product documentation. To provide feedback, send an email to: documentation@secude.com

Include the following details in your feedback:

- Product name and version
- Documentation topic
- Description of the suggestion or error

The technical documentation team reviews all feedback and incorporates relevant updates in future documentation releases.



www.secude.com

About Secude

Secude, a trusted Microsoft and Siemens Digital Industries Software partner, is a global leader in Zero Trust data protection and data governance.

Our solutions extend Microsoft Purview Information Protection (MPIP) to secure sensitive files—including CAD and PLM assets—from the moment of creation. By embedding persistent protection and access controls directly into design and engineering data, we help enterprises prevent Intellectual Property (IP) theft, data leakage, reputational damage, and compliance risks. With operations in Europe, North America, and Asia, Secude supports global manufacturers, defense contractors, and AEC firms in implementing robust IT security strategies across the product lifecycle and digital supply chain.