



**HaloCAD**

HaloCAD for Viewers  
Installation and Usage Manual  
Version 1.5

## Copyright

© 2024-2025 Secude Solutions AG. All Rights Reserved.

This Secude-branded software and its corresponding documentation are the exclusive property of Secude Solutions AG of Luzern, Switzerland and are protected under the various copyright laws around the world and by various other intellectual property laws. The use of this software and/or its documentation and any copying thereof by end users is subject to the terms of a license agreement with Secude Solutions AG. The wrongful use or copying of this software and/or documentation subjects infringers to both criminal and civil liabilities.

ANY USE, COPYING, REPRODUCTION, ALTERATION, TRANSMISSION, OR TRANSLATION OF THESE MATERIALS, IN WHOLE OR IN PART, IN ANY FORM OR BY ANY MEANS, IS STRICTLY PROHIBITED WITHOUT THE PRIOR WRITTEN PERMISSION OF SECUDE SOLUTIONS AG. IF THIS MATERIAL IS PROVIDED WITH SOFTWARE LICENSED BY SECUDE, THE INFORMATION HEREIN IS PROVIDED SUBJECT TO THE TERMS OF THE WARRANTY PROVIDED WITH THE PRODUCT LICENSE. IF THIS MATERIAL IS NOT PROVIDED WITH LICENSED SOFTWARE, THE INFORMATION HEREIN IS PROVIDED "AS IS" WITHOUT WARRANTY OF ANY KIND. IN EITHER CASE, THERE ARE NO OTHER WARRANTIES, EITHER EXPRESS OR IMPLIED, INCLUDING, BUT NOT LIMITED TO THE IMPLIED WARRANTIES OF MERCHANTABILITY, FITNESS FOR A PARTICULAR PURPOSE, NONINFRINGEMENT, OR QUALITY. IN NO EVENT SHALL SECUDE SOLUTIONS AG OR ANY OF ITS AFFILIATES BE LIABLE FOR ANY DIRECT OR INDIRECT, SPECIAL, INCIDENTAL, CONSEQUENTIAL, PUNITIVE, OR EXEMPLARY DAMAGES ARISING OUT OF THE USE OR INABILITY TO USE THE MATERIALS AND/OR INFORMATION CONTAINED HEREIN. Some jurisdictions do not allow the exclusion of implied warranties, so the above exclusion may not apply to you.

Secude Solutions AG takes reasonable measures to ensure the quality of the data and other information produced herein. However, these materials may contain technical inaccuracies or typographical errors, and are not guaranteed to be error-free. Information may be changed or updated without notice. Secude Solutions AG has no obligation to update these materials based on changes to its products or services or those of third parties. Secude Solutions AG may also make improvements or changes to the products or services described in this information at any time without notice. Secude Solutions AG frequently releases new versions and updates to its software, and therefore images shown in this document may be slightly different from what you see on screen.

As with any security product, Secude Solutions AG highly recommends the back up of data as well as passwords on a regular basis. Secude Solutions AG is not responsible for the loss of passwords or data that cannot be retrieved based upon a user's failure to adhere to stringent backup and safe-keeping conventions.

## Contact

Secude Solutions AG  
Landenbergstrasse 34  
6005 Luzern  
Switzerland  
Tel: +41 41 510 70 70  
Mail: [info@secude.com](mailto:info@secude.com)

## Support

Web: <https://support.secude.com>  
Mail: [support@secude.com](mailto:support@secude.com)

# Table of Contents

<b>1. INTRODUCTION</b>	<b>1</b>
<b>2. GENERAL FAQs</b>	<b>2</b>
<b>3. QUICK START INSTALLATION SUMMARY</b>	<b>3</b>
<b>4. ARCHITECTURE</b>	<b>4</b>
<b>5. SYSTEM REQUIREMENTS</b>	<b>5</b>
<b>6. SECURE INSTALLATION (RECOMMENDED)</b>	<b>7</b>
<b>7. INSTALLATION MODES</b>	<b>9</b>
7.1. Graphical Mode	9
7.2. Registry Settings	18
7.3. Silent Mode	19
7.4. Via System Center Configuration Manager	20
<b>8. OPERATING INSTRUCTIONS</b>	<b>21</b>
8.1. How does it work?	21
8.2. How to Open a Protected File in HaloCAD for Viewers?	22
8.2.1. What Happens if You Try to Copy Data or Print Screen?	23
8.2.2. What Happens if You Try to Export or Print?	24
8.2.3. What Happens if You Try to Write or Send the File via Email?	24
<b>9. CUSTOMER SUPPORT</b>	<b>25</b>
<b>10. DOCUMENTATION FEEDBACK</b>	<b>26</b>
<b>11. APPENDIX</b>	<b>27</b>
11.1. Enable Support for TLS 1.2 at the Client Workstation for Microsoft Entra ID	27
11.2. Third-Party Libraries	28
11.3. Uninstalling the HaloCAD for Viewers	29

# Typographic Conventions

This guide uses the following typographic conventions to distinguish types of in-text information and icons to alert you to important information.

Convention	Description
<b>Boldface type</b>	<ul style="list-style-type: none"><li>• Items you must select, such as menu options, command buttons, or items in a list.</li><li>• Titles of sections, sub-sections, etc.</li></ul>
<i>Italic type</i>	<ul style="list-style-type: none"><li>• To emphasize a word</li><li>• Error messages</li><li>• Table and Figure captions</li></ul>
Consolas Font	<ul style="list-style-type: none"><li>• Package names</li><li>• Filenames and directory names</li><li>• XML element names and attribute names</li><li>• Parameters</li><li>• File type</li><li>• Code examples</li></ul> <p>Example:</p> <pre>hesadm.exe start -user &lt;domain\user&gt; -pwd &lt;password&gt;</pre>
Hyperlink	Provides quick and easy access to cross-referenced topics. Hyperlinks are highlighted in blue and underlined.
Admonitions	<div data-bbox="416 1171 1394 1279" style="border: 1px solid yellow; padding: 5px;"><p><b>Note</b> Provides additional information relevant to the topic.</p></div> <div data-bbox="416 1335 1394 1518" style="border: 1px solid red; padding: 5px;"><p><b>Warning</b> Contains information about circumstances, parameters, and so on that <b>MUST</b> be fulfilled. Failure to comply will have consequences for the current operation.</p></div> <div data-bbox="416 1574 1394 1682" style="border: 1px solid green; padding: 5px;"><p><b>Tip</b> Contains useful information about the operation of the application.</p></div> <div data-bbox="416 1738 1394 1883" style="border: 1px solid blue; padding: 5px;"><p><b>Info</b> Contains information, guidelines, or suggestions for performing tasks more effectively.</p></div>

# 1. Introduction

As a part of the digital process chain, CAD files are highly valued, such as drawings, blueprints, and prototypes that need to be shared with suppliers, partners, or vendors on a day-to-day basis. There is always a high risk of data being lost or stolen, knowingly or unknowingly, when collaborating with suppliers or partners. With Secude's HaloCAD for Viewers, you can ensure your design files are secure with persistent access controls without any risk of data getting stolen or lost.

## **About this Manual**

This manual walks you through the process of installing, configuring, and operating HaloCAD for Viewers.

## 2. General FAQs

This chapter provides answers to the most frequently asked questions (FAQ). If you have any further inquiries, please contact our sales representative or our support team.

### 1. **What can HaloCAD for Viewers offer a user?**

HaloCAD for Viewers is a lightweight application to view the protected files in other CAD-Viewer applications with “View only” access to all users who have access to it.

### 2. **Is it possible to view all types of CAD files that are protected?**

You can only access HaloCAD-protected CAD files that are mentioned as supported file types in the Release Notes.

### 3. **What languages are supported by the HaloCAD add-on?**

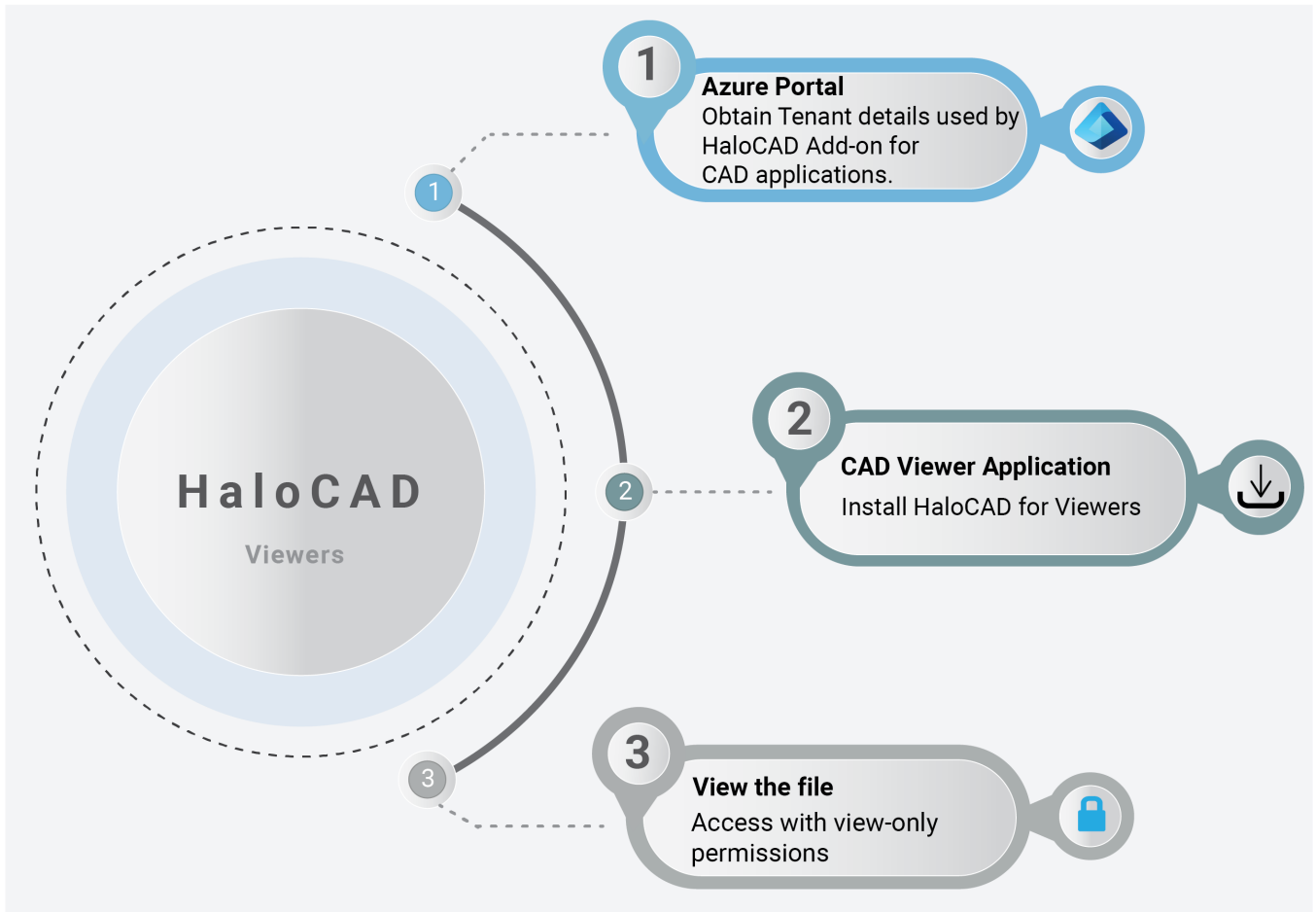
Currently, the HaloCAD add-on only supports the English language.

### 4. **What happens if an unauthorized person tries to open a HaloCAD-protected CAD file?**

At first, user authentication takes place. It is a process of verifying the identity of the user. If the user fails during the authentication, he/she will be prompted with an error message and access will be denied.

### 3. Quick Start Installation Summary

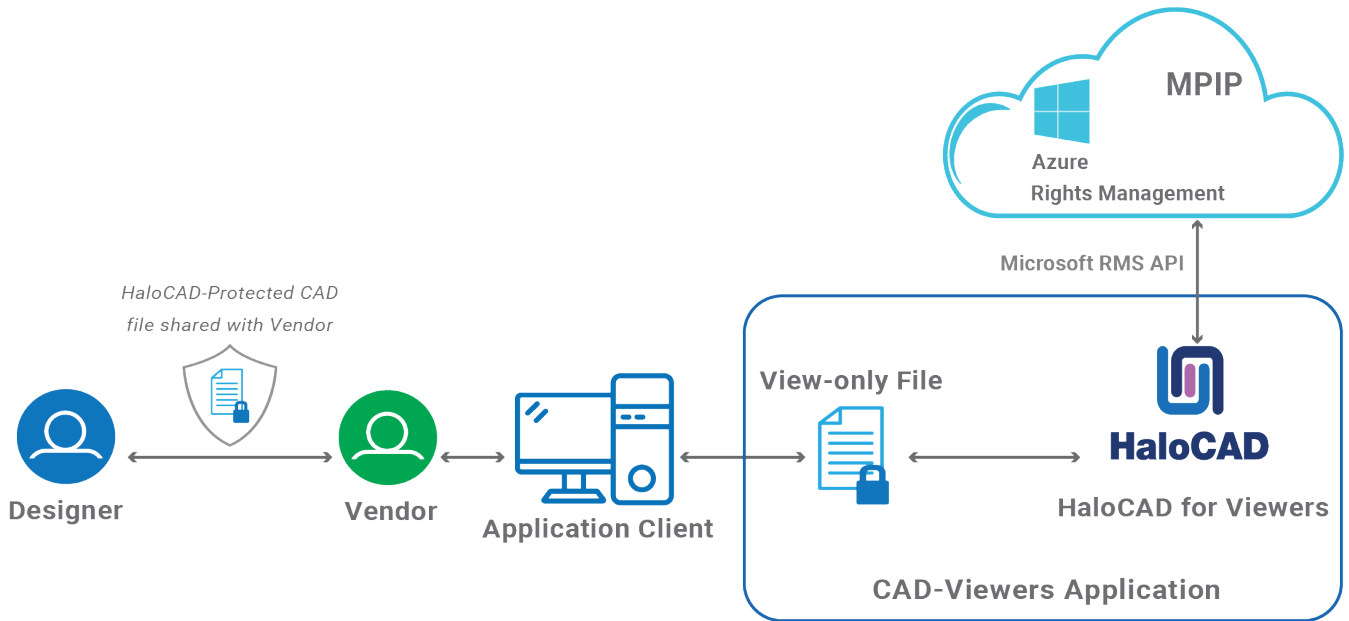
The following image shows the high-level idea of setting up HaloCAD.



*HaloCAD quick start installation steps*

## 4. Architecture

HaloCAD for Viewers is a lightweight application designed to view HaloCAD-protected files in other CAD-Viewer applications with “View only” access to all users who have access to it. This application is useful for suppliers or partners who need to access HaloCAD-protected models or drawings in their environment. The high-level architecture of HaloCAD for Viewers is illustrated in the following figure.



*HaloCAD for Viewers*

## 5. System Requirements

The following system requirements table specifies the minimum and recommended technical specifications, such as software and network resources, necessary to run the product.

Components	Details
Supported Operating Systems	Windows 11 or above with updates installed.
Supported File Types	<ol style="list-style-type: none"> <li>1. Creo: .pvs, .pz, .ed, .edz, .dwg, .dxf, and .step</li> <li>2. SolidEdge: .dft and .jt</li> <li>3. AutoCAD: .dwg and .dxf</li> <li>4. Teamcenter: .jt</li> </ol> <p>Note: Extensions will be evaluated and added to the list in response to user requirements.</p>
Office 365 Subscription	<ol style="list-style-type: none"> <li>1. An Azure subscription is required to use Azure RMS and the MPIP functionality.</li> <li>2. A working Microsoft Entra ID service must be available.</li> <li>3. Use the same <b>Application ID</b> and <b>Redirect URI</b> which is used by HaloCAD Add-on for CAD.</li> <li>4. TLS 1.2 or higher must be enabled to ensure the use of cryptographically secure protocols at all client workstations.</li> <li>5. Audit logging: Your Azure subscription must include Log Analytics on the same tenant as Microsoft Entra ID.</li> </ol>

### Requirements

#### Recommended URLs, addresses, and ports for MPIP

MIP SDK doesn't support the use of authenticated proxies. So, make sure you set the Microsoft 365 endpoints to bypass the proxy. View a list of endpoints at "[Microsoft Online Documentation](#)". However, Microsoft recommends the following:

Addresses	Ports
*.protection.outlook.com	TCP 443

## Secude

Addresses	Ports
40.92.0.0/15, 40.107.0.0/16, 52.100.0.0/14, 52.238.78.88/32, 104.47.0.0/17, 2a01:111:f403::/48	
*.aadrm.com, *.azurerms.com, *.informationprotection.azure.com, ecn.dev.virtualearth.net, informationprotection.hosting.port al.azure.net, *.office.com (add <a href="https://substrate.office.com">substrate.office.com</a> if you don't want to add all sub-domains), cr13.digicert.com, cr14.digicert.com.	TCP 443, 80
<b>For event logging</b>  *.events.data.microsoft.com	TCP 443
<b>National Cloud</b>	<b>Microsoft Entra ID authentication endpoint</b>
Microsoft Entra ID for the US Government	<a href="https://login.microsoftonline.us">https://login.microsoftonline.us</a>
Microsoft Entra ID (global service)  For details on Microsoft Entra ID endpoints, please refer to " <a href="#">Microsoft Online Documentation</a> ".	<a href="https://login.microsoftonline.com">https://login.microsoftonline.com</a>

*Recommended endpoints*

## 6. Secure Installation (Recommended)

As a best practice, any application secrets should not be shared with end-users, third parties, or any trusted vendors. However, to avail of HaloCAD features, there is a need to share such sensitive information for a successful installation.

To overcome this challenge, Secude offers an admin utility tool that can write and encrypt data including Azure application specifics (Application ID, Tenant ID, and Redirect URI), and Cloud type details in an encrypted configuration file. It uses the RSA algorithm for cryptography, allowing only the HaloCAD installer to access the configuration file with the private key during the initialization process, effectively masking the Initialization screen from the user.

Thus, the administrator can share this encrypted JSON file with internal/external parties without disclosing the original tenant details.

### HaloCAD Admin Utility Tool

The HaloCAD product package comprises an additional component—`hc.admintool.exe`.

**Prerequisites:** Before executing the admin tool, make sure you have the necessary information.

1. Azure application details for initialization
2. Cloud type details

### How to Encrypt the Configuration File

1. From the product package, move the **admintool** folder to your preferred location. For example, `C:\Users\superdocs\Desktop\admintool`.
2. Open the Command Prompt with elevated rights (Run as Administrator).
3. Navigate to the directory of the **admintool** folder and type `hc.admintool.exe` and press **Enter**.
4. Enter the required details. For example,

**Cloud type: Commercial** - `hc.admintool.exe v6ca776-c74e-437d-98ef-`

`662ecb5751tt https://localhost 9c1cfc28-1ec6-44ea-bec6-e3492ef0cd16 Commercial`

**Cloud type: US\_DoD** - `hc.admintool.exe v6ca776-c74e-437d-98ef-`

`662ecb5751tt https://localhost 9c1cfc28-1ec6-44ea-bec6-e3492ef0cd16 US_DoD`

**Cloud type: Custom** - `hc.admintool.exe v6ca776-c74e-437d-98ef-662ecb5751tt`

`https://localhost 9c1cfc28-1ec6-44ea-bec6-e3492ef0cd16 Custom https://api.aadrm.com`

`https://dataservice.protection.outlook.com`

5. The output window will now look as follows:

```

Administrator: Command Prompt
C:\Users\superdocs\Desktop\admintool>hc.admintool.exe
Usage:
  hc.admintool.exe <application_id> <redirect_uri> <tenant_id> <<cloud_type[Commercial|
Custom|Germany|US_DoD|US_GCC|US_GCC_High|US_Sec|US_Nat|China]> [protectioncloudurl] [po
licycloudurl]>
Example:
  hc.admintool.exe abcd123-45ed-678abc1234ab https://example:12345 abcd123-45ed-678abc
1234ab Cloudtype protectioncloudurl policycloudurl

C:\Users\superdocs\Desktop\admintool>hc.admintool.exe v6ca776-c74e-437d-98ef-662ecb
5751tt https://localhost 9c1cfc28-1ec6-44ea-bec6-e3492ef0cd16 Custom https://api.aadrm.
com/ https://dataservice.protection.outlook.com/
You have entered
  application_id: v6ca776-c74e-437d-98ef-662ecb5751tt
  redirect_uri: https://localhost
  tenant_id: 9c1cfc28-1ec6-44ea-bec6-e3492ef0cd16
  cloud_type: Custom
  protection_ep: https://api.aadrm.com/
  policy_ep: https://dataservice.protection.outlook.com/
ENC File Generation Successful: File has been encrypted.

```

Admin tool output

**6. Results:**

- a. The hc.conf.json file will be replaced by an encrypted file named hc.conf.enc.
- b. You can now share the configuration file with external users. With this file, users can install the HaloCAD add-on on their workstations seamlessly, without requiring any additional configuration details.
- c. Configuration files created with earlier releases are not supported. Always use the admin tool included in the installation package to generate a new configuration file.

**What to do next**

- 1. Place the encrypted file hc.conf.enc along with the HaloCAD installer.
- 2. To begin the interactive installation, double-click the installer and follow the instructions as mentioned in the section "Installation Modes".
- 3. By reading data from the hc.conf.enc file, the installer bypasses the "Initialization" screen where it would ask for Azure details.

## 7. Installation Modes

You can install the HaloCAD for Viewers in the following modes:

### 1. Graphical Mode

Graphical mode installation is an interactive, graphical user interface-based method that is driven by a wizard.

### 2. Silent Mode

Silent-mode installation is a non-interactive method of installing the add-on using command lines.

### 3. Via System Center Configuration Manager

With System Center Configuration Manager (SCCM), the add-on is deployed on the targeted computers across your enterprise.

## 7.1. Graphical Mode

### Before you begin

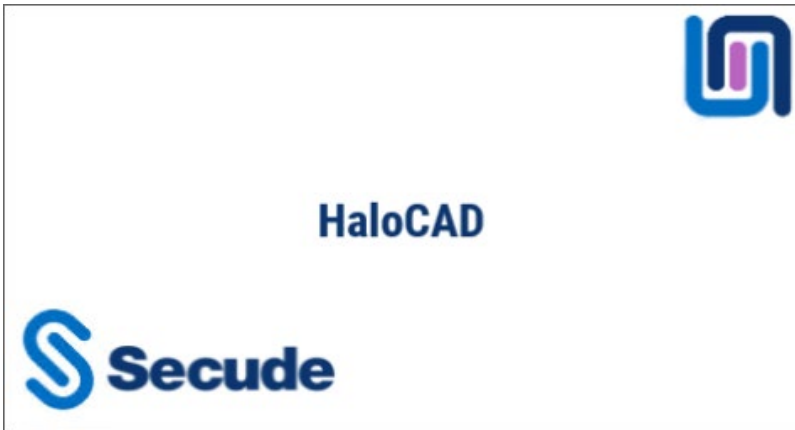
The following prerequisites must be met:

1. A user who installs HaloCAD for Viewers must have administrator rights.
2. Make sure your Microsoft Entra tenant information is ready to enter when the setup process prompts for a manual installation. Alternatively, use `hc.conf.enc` for a secure installation.

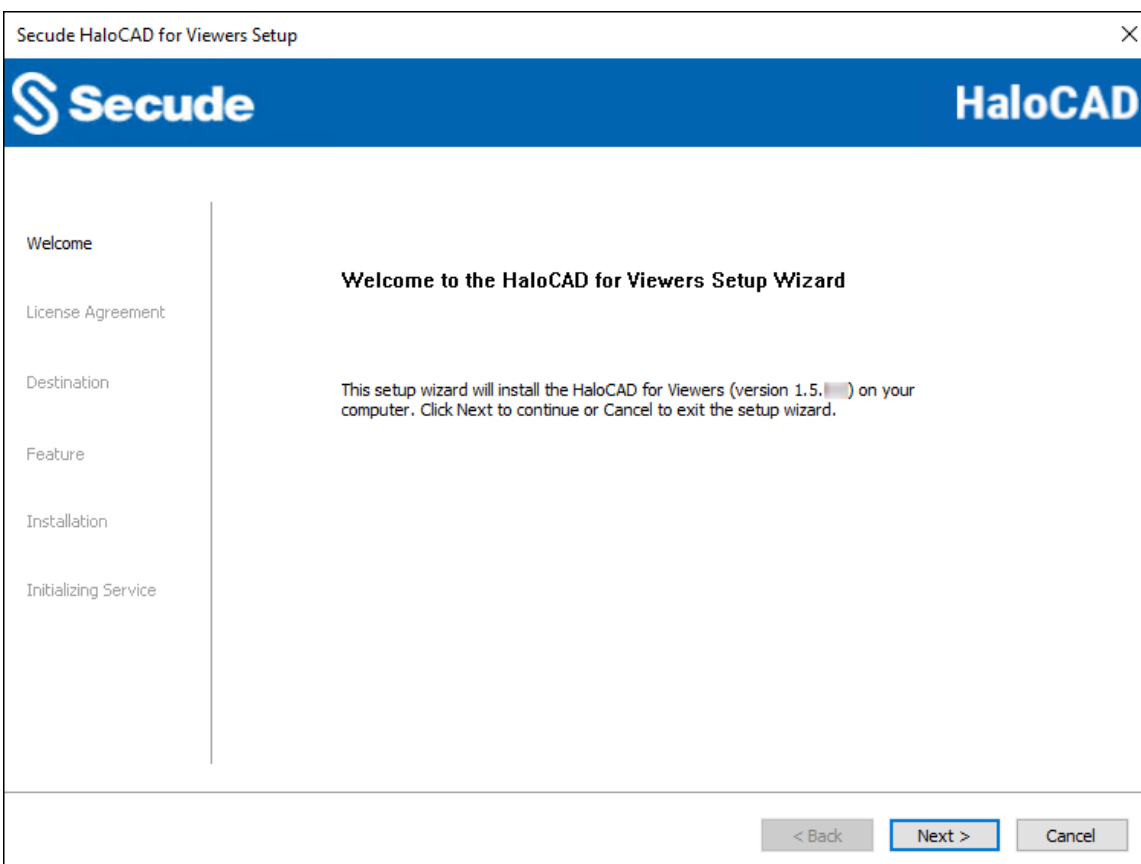
### Installation Procedure

Install the HaloCAD for Viewers using the GUI-based setup program provided in the installation package.

1. To begin the interactive installation, double-click the installer `HaloCAD_Viewers_Shield_Setup.exe` file.
2. Depending on your Windows security settings, you may get a warning such as *"Do you want to allow the following program to make changes to this computer?"*. If you get this security warning, click the **Yes** button to continue the installation.
3. When the installer starts, the **Startup** dialog appears, followed by the **Welcome** dialog.

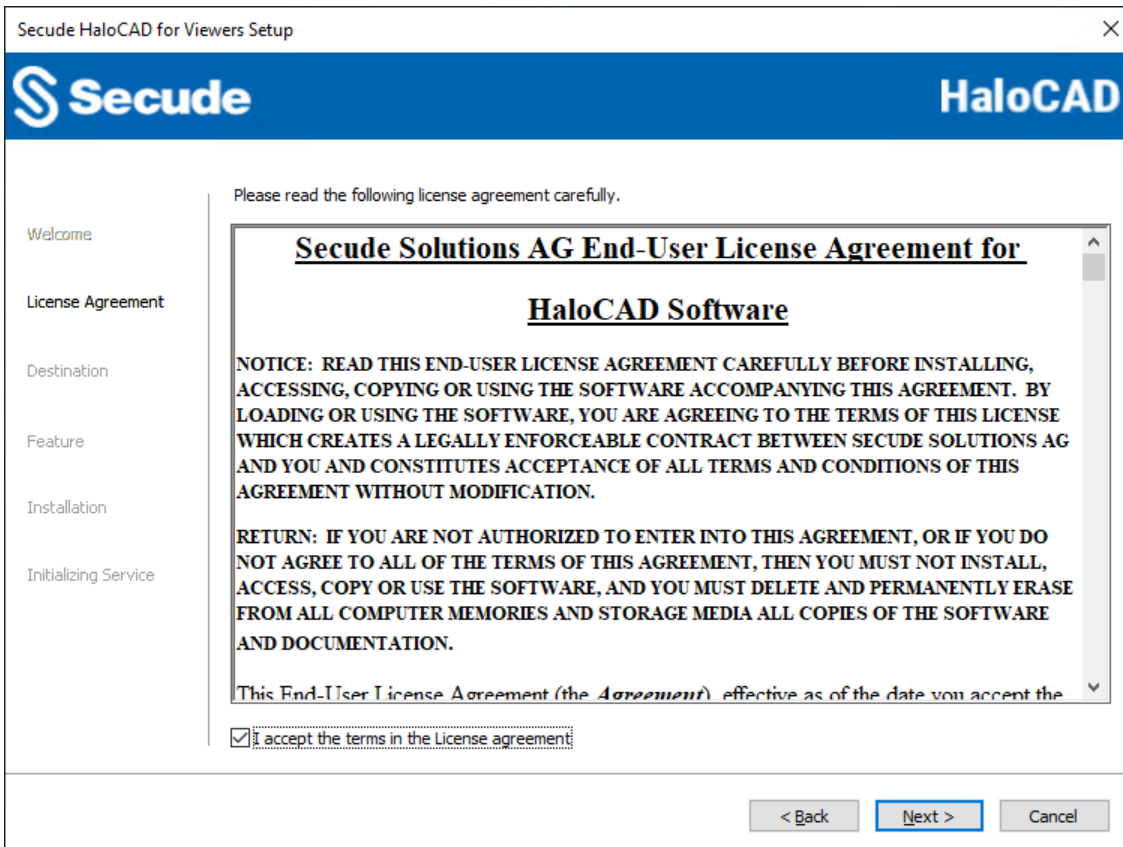


Startup dialog



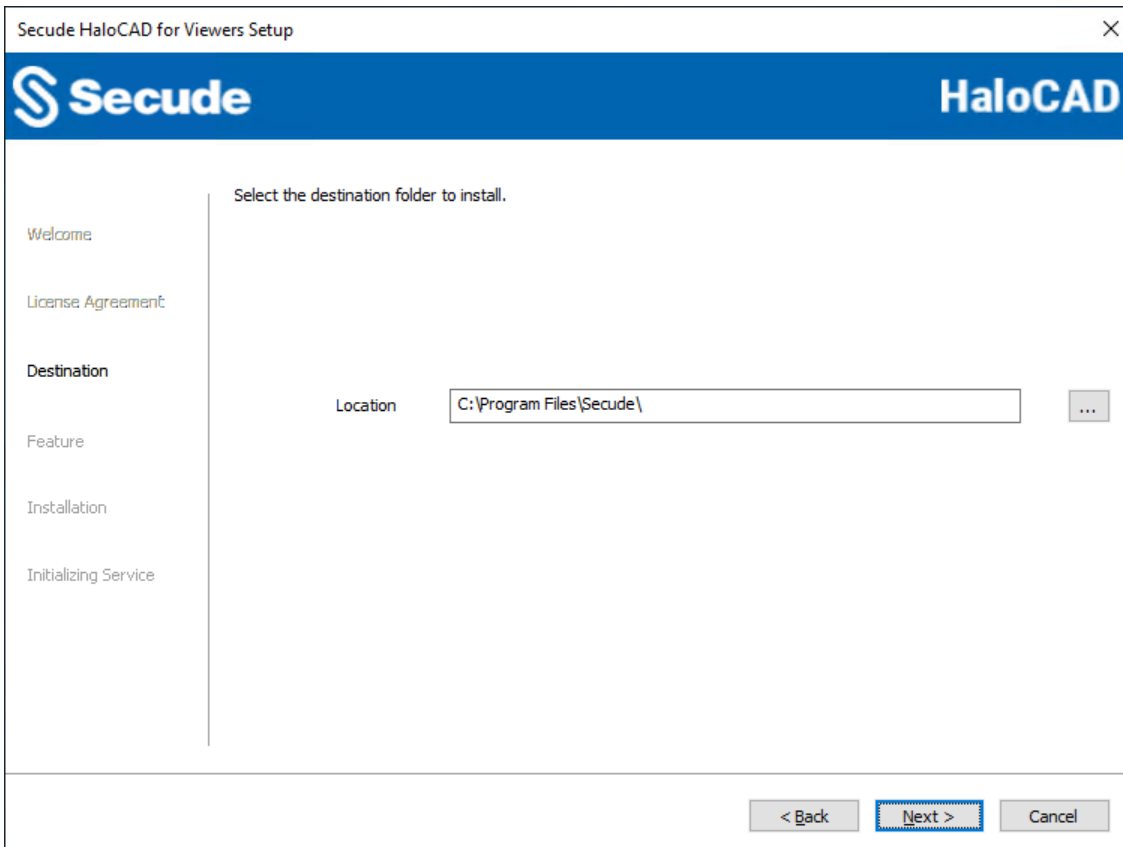
Welcome dialog

4. Click **Next** to continue the installation.
5. The **End-User License Agreement (EULA)** dialog appears.



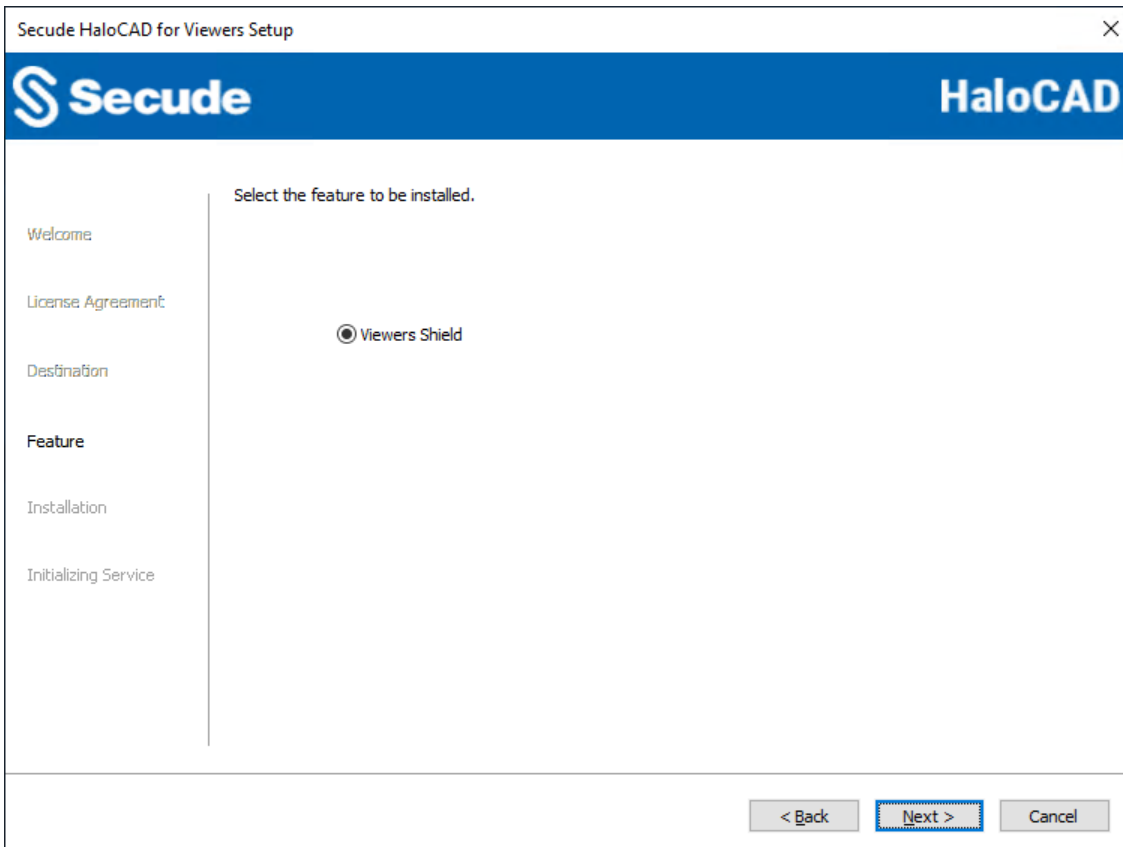
*End-User License Agreement dialog*

6. Read the **End-User License Agreement**. If you agree, select **I accept the terms in the License Agreement**, and click **Next** to continue.
7. The destination folder selection dialog appears:



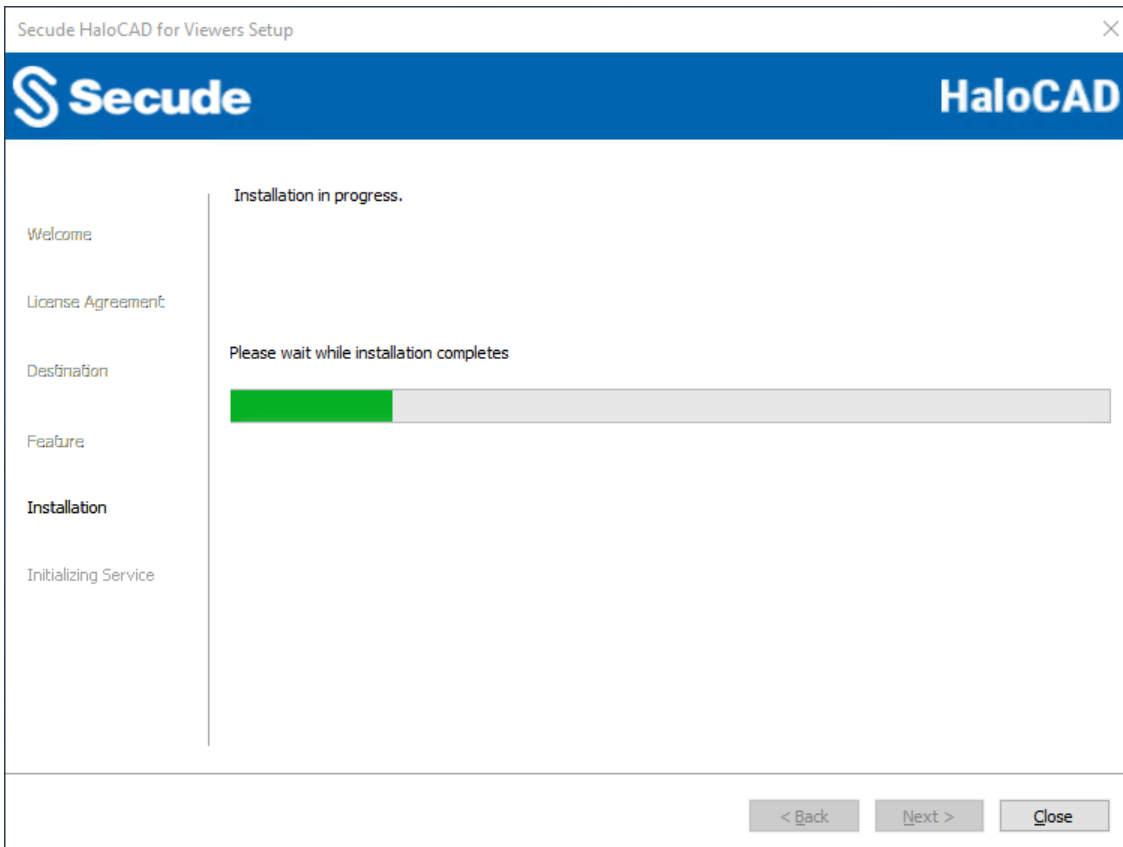
*Destination folder selection dialog*

8. By default, application files are stored in the program files directory (C:\Program Files\Secude\). If you would like to choose an alternate location, click the **Browse** button and select your location preference. When you are finished, click **Next**.
9. The feature selection dialog appears.



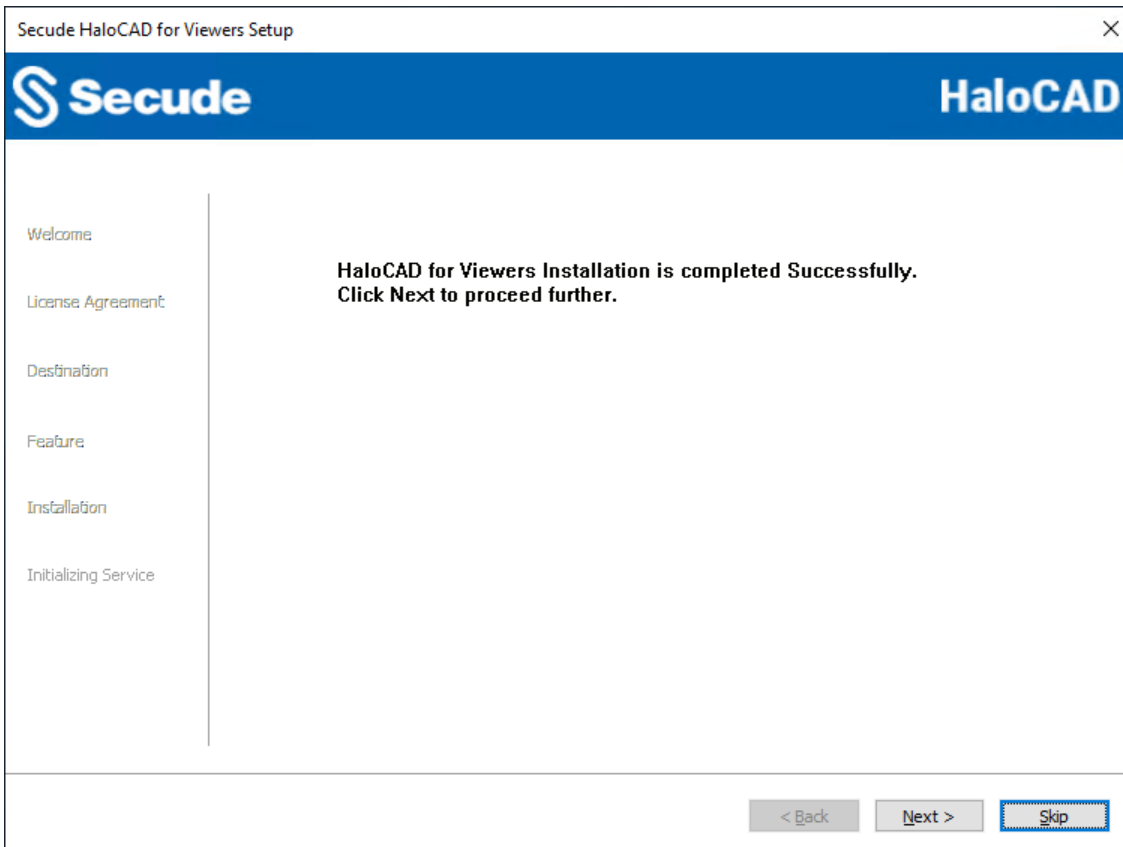
*Feature selection dialog*

10. The **Viewers Shield** option is selected by default.
11. To review or modify any installation settings, click **Back** to return to the previous screens. If you are ready to proceed, click **Next** to begin installing the application.
12. The installation begins, and the progress is displayed in the dialog.



*Installation progress dialog*

13. When the installation is complete, a message appears confirming that the add-on has been successfully installed. Click **Next** to proceed.

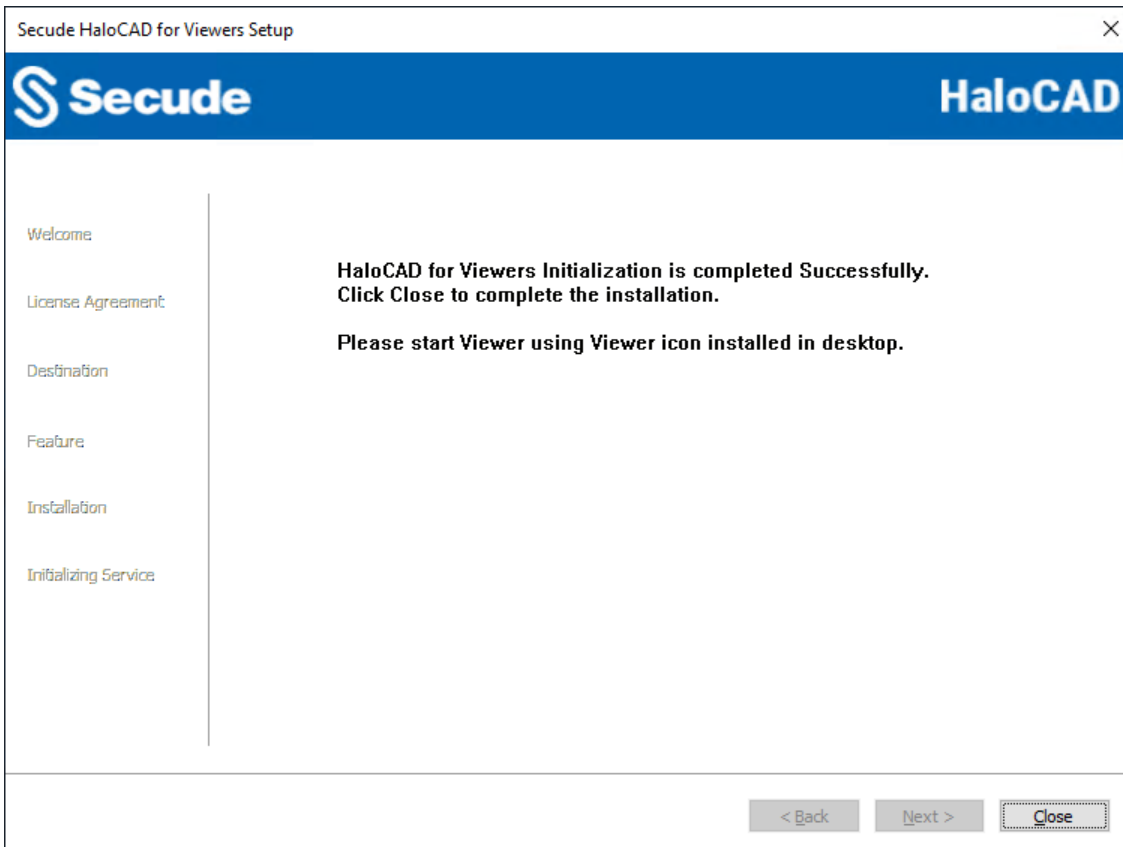


*Installation completed dialog*


14. The initialization dialog appears. To avoid connectivity issues, make sure to enter the correct Azure application registration information in the screen below. Note: If you have included the `hc.conf.enc` file with the installer, the following initialization screen will not appear, and you will just see the completion dialog. The initialization screen appears only if the `hc.conf.enc` file is not included in the installer folder.

*Initialization dialog*

- a. **Application ID:** Enter the unique identifier of your registered application. For example, v6ca776-c74e-437d-98ef-662ecb5751tt
  - b. **Redirect URI:** Enter the URI which was provided when registering the native application in the Azure portal. For example, https://localhost
  - c. **Tenant ID:** If the registered application is **Single tenant**, you need to enter the globally unique identifier of your tenant if not, you can leave it empty. For example, 9c1cfc28-1ec6-44ea-bec6-e3492ef0cd16.
  - d. **Cloud Type:** By default, Commercial will be set. However, based on your Azure subscription and configuration, you can change the cloud type from the list – Commercial / Custom / Germany / US\_DoD / US\_GCC / US\_GCC\_High / US\_Sec / US\_Nat / China\_01. In the case of **Custom** cloud type, you need to enter the appropriate URLs in **Protection Cloud URL** (for example, https://api.aadrm.com) and **Policy Cloud URL** (for example, https://dataservice.protection.outlook.com).
  - e. Click **Next**.
15. Once the initialization is completed, you will get the success message as shown below.

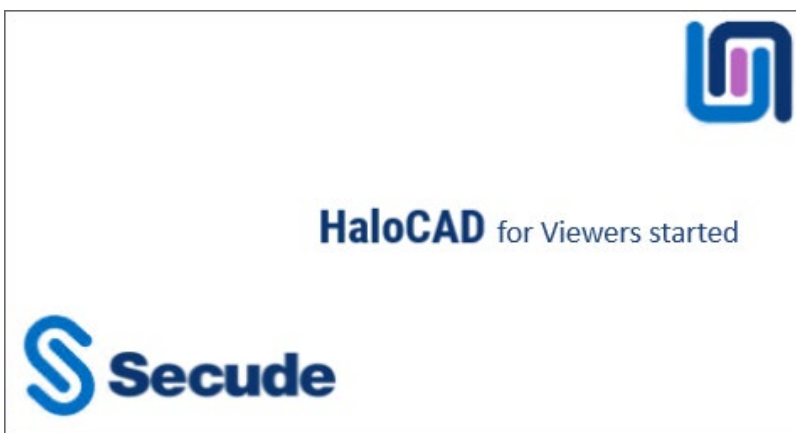


*Initialization completed dialog*

16. Click **Close** to close the installation wizard.
17. After the installation, a shortcut icon  is created on the desktop to provide easy access to the application. It is also loaded on the startup menu.

**Post-installation steps**

1. To launch the application, you need to double-click on the **HaloCAD\_Viewers** icon or open the **Start menu** and go to **All apps** > select **HaloCAD\_Viewers**. You will see the startup dialog as shown below:



*Viewers Startup dialog*

2. If the machine has restarted or a new login session has started, the Viewers application will start automatically.

3. Double-clicking on the **HaloCAD\_Viewers** icon when the Viewers application is already running, HaloCAD will display a message as *"HaloCAD for Viewer already running"*.
4. After logging into the HaloCAD session and signing in through the Microsoft Account Sign-in Assistant, you can access the following log files
  - a. HaloCAD logs at %AppData%\Roaming\Secude\HaloCAD\viewers\halocad.log
  - b. MIP SDK logs at %AppData%\Roaming\Secude\HaloCAD\viewers\mip\logs\mip\_sdk.miplog

## 7.2. Registry Settings

Prerequisite: Make sure to back up the registry before making any changes, in case you need to restore it later.

### Modifying the Registry

The following section explains how the registry is used to store settings related to HaloCAD. To modify the registry value, open Registry Editor, navigate to this path Registry Root Directory = KEY\_LOCAL\_MACHINE\SOFTWARE\Secude\HaloCAD for Viewers, locate the registry key you want to update, and modify it as needed. You can also view general configuration information for HaloCAD in the same registry path. Note: Only the registry entries listed in the table below should be modified.

Name	Default Value	Type	Description
log_enable	on	REG_SZ	Defines the status of the log. <ul style="list-style-type: none"> <li>• On = Log file will be generated in the default location</li> <li>• Off = Log file will not be generated</li> <li>• Clean = Log files will be deleted. This parameter deletes only the logs and does not modify the log_enable to "Clean" from "on/off".</li> </ul>
log_level	3	REG_SZ	Log level information is logged in the halocad.log file. <ul style="list-style-type: none"> <li>• Log level: 1: Error and Info</li> <li>• Log level: 2: Error, Warning, and Info</li> <li>• Log level: 3: Error, Warning, and Info</li> <li>• Log level: 4: Error, Warning, Info, and Debug</li> </ul>
log_purge	7	REG_SZ	It indicates removing files older than a defined time frame. By default, the log files older than 7 days will be deleted.

Name	Default Value	Type	Description
log_rollover	100	REG_SZ	Defines the log rollover time, i.e., a new log file will be generated based on the specified minute(s). By default, a new log file will be generated every 100 minutes.
mipallowpii	false	REG_SZ	<p>Enable or disable the visibility of Personally Identifiable Information (PII) such as Email names and IP addresses in the MIP SDK logs.</p> <ul style="list-style-type: none"> <li>• true—PII will be visible in clear text in the MIP SDK logs.</li> <li>• false (default)—PII will be masked with asterisks in the MIP SDK logs. This helps to protect the PII's confidentiality.</li> </ul>

*Registry value*

### Next Steps

HaloCAD for Viewers has been successfully installed and initialized in your environment. You may now proceed to open protected files using the supported CAD Viewer applications. For more information, please refer to the section "[Operating Instructions](#)".

## 7.3. Silent Mode

In addition to the graphical mode, HaloCAD for Viewers can be installed in silent mode, which does not display a user interface and requires no user interaction. This provides a convenient way to streamline the installation by executing the command once.

1. Open the Command Prompt with elevated rights (Run as Administrator).
2. Navigate to the installer directory.
3. To know the list of options available in silent mode, follow the steps given below:

**Type** HaloCAD\_Viewers\_Shield\_Setup.exe -help

**Press** Enter

### Output

...

```
HaloCAD_Viewers_Shield_Setup.exe [-install [-viewersshield] [-dir
<destination_directory>] <ApplicationID> <Redirect URI> <TenantID/Name> <Cloud Type
("Commercial"|"Custom"|"Germany"|"US_DoD"|"US_GCC"|"US_GCC_High"|"US_Sec"|"US_Nat"|"C
hina_01"|"" )> [(if Custom) <Protection Cloud Url> <Policy Cloud url> ] ]
```

For Silent Mode Installation, if ENC file already exists in the same location

```
HaloCAD_Viewers_Shield_Setup.exe [-install [-viewersshield] [-dir
```

```
<destination_directory>]
```

```
HaloCAD_Viewers_Shield_Setup.exe [-uninstall -silent <true|false>]
```

4. The following is an example to install HaloCAD for Viewers using the command line.

```
HaloCAD_Viewers_Shield_Setup.exe -install -viewersshield -dir "C:\Program  
Files\Secude" v6ca776-c74e-437d-98ef-662ecb5751tt https://localhost 9c1cfc28-1ec6-  
44ea-bec6-e3492ef0cd16 Custom https://api.aadrm.com  
https://dataservice.protection.outlook.com
```

5. The example below shows how to install the add-on using the `hc.conf.enc` file located in the same installation location as mentioned.

```
HaloCAD_Viewers_Shield_Setup.exe -install -viewersshield -dir "C:\Program  
Files\Secude"
```

6. Press Enter.

7. Installation is completed.

## 7.4. Via System Center Configuration Manager

The Microsoft System Center Configuration Manager (SCCM) is an administration tool that enables organizations to push out relevant operating systems and applications to Windows users quickly and cost-effectively within its environment.

Using SCCM, the add-on can be installed silently and automatically on the specifically targeted computers across your enterprise.

### Before you begin

1. Make sure that you have read the prerequisites given in the section "[Graphical Mode](#)".
2. We recommend familiarizing the best practices for creating a deployment procedure.
3. For information about preparing your environment, please refer to the online Microsoft documentation.

Follow the steps below to deploy using SCCM:

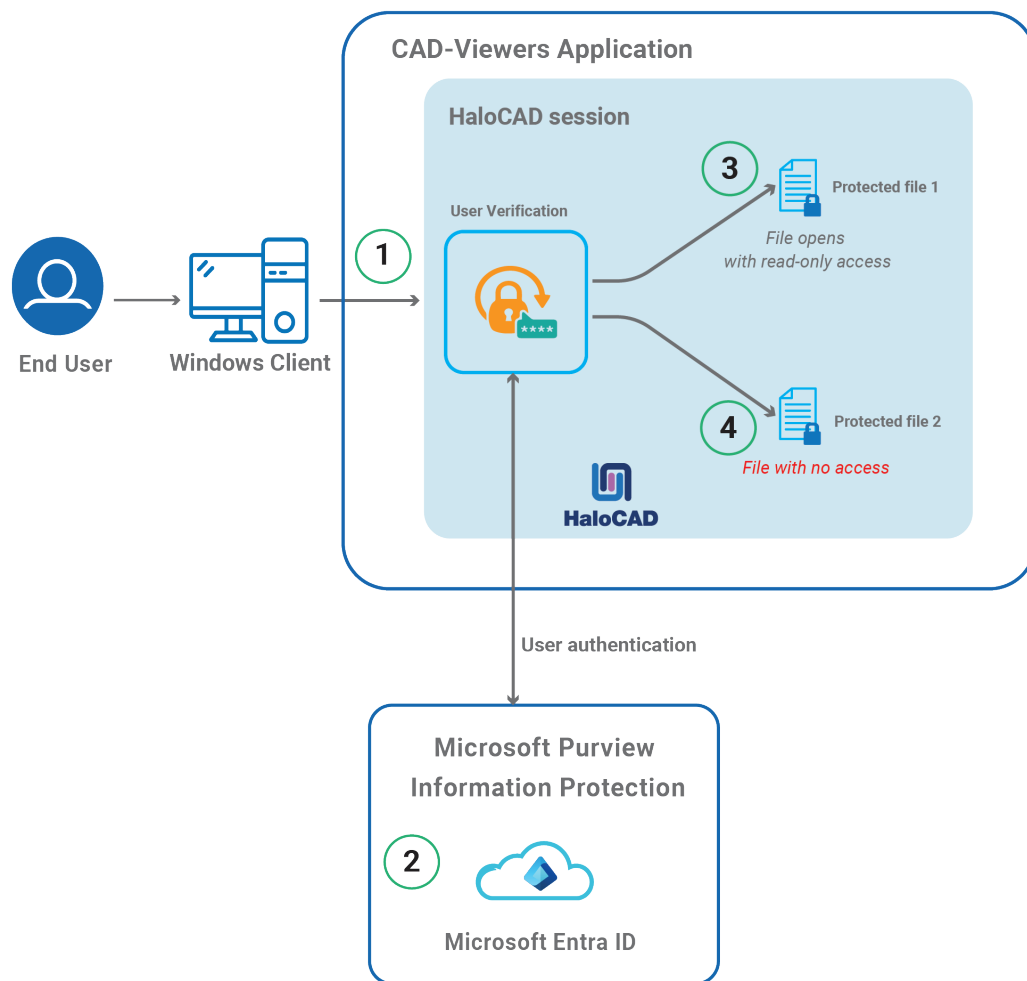
1. This guide assumes that you have already set up a SCCM environment.
2. Use the silent mode commands mentioned in the section "[Silent Mode](#)" when needed.

## 8. Operating Instructions

This section outlines key operations procedures for working with HaloCAD for Viewers.

### 8.1. How does it work?

At a high level, HaloCAD workflow involves the following steps:



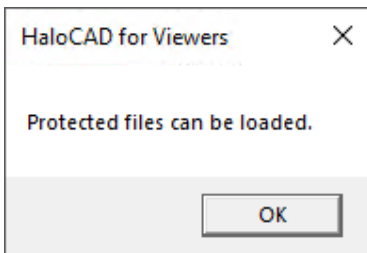
#### *HaloCAD for Viewers*

1. The user opens the CAD-Viewers application, HaloCAD loads, and displays the message *'Protected files can be loaded'*.
2. The first time logging in to the HaloCAD session requires a connection to Microsoft Azure, which verifies the authenticity of the user. In our scenario, the user intends to open two HaloCAD-protected files (File 1 and File 2) using the CAD-Viewers application.
3. The user is authorized to open File 1 with view-only permission.
4. However, the user does not have sufficient permissions to open File 2, therefore, the file cannot be opened.

## 8.2. How to Open a Protected File in HaloCAD for Viewers?

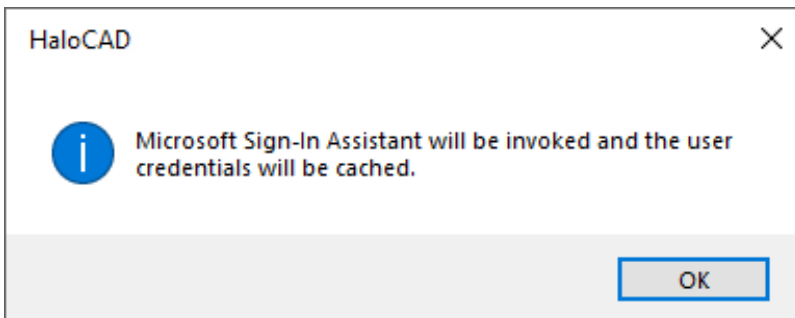
Prerequisite: Make sure that HaloCAD for Viewers is installed.

1. Open any supported Viewer application. For Example, Teamcenter Visualization Base.
2. HaloCAD for Viewers loads automatically whenever a viewer application is launched, and you will receive the following message.



*Protected files can be loaded*

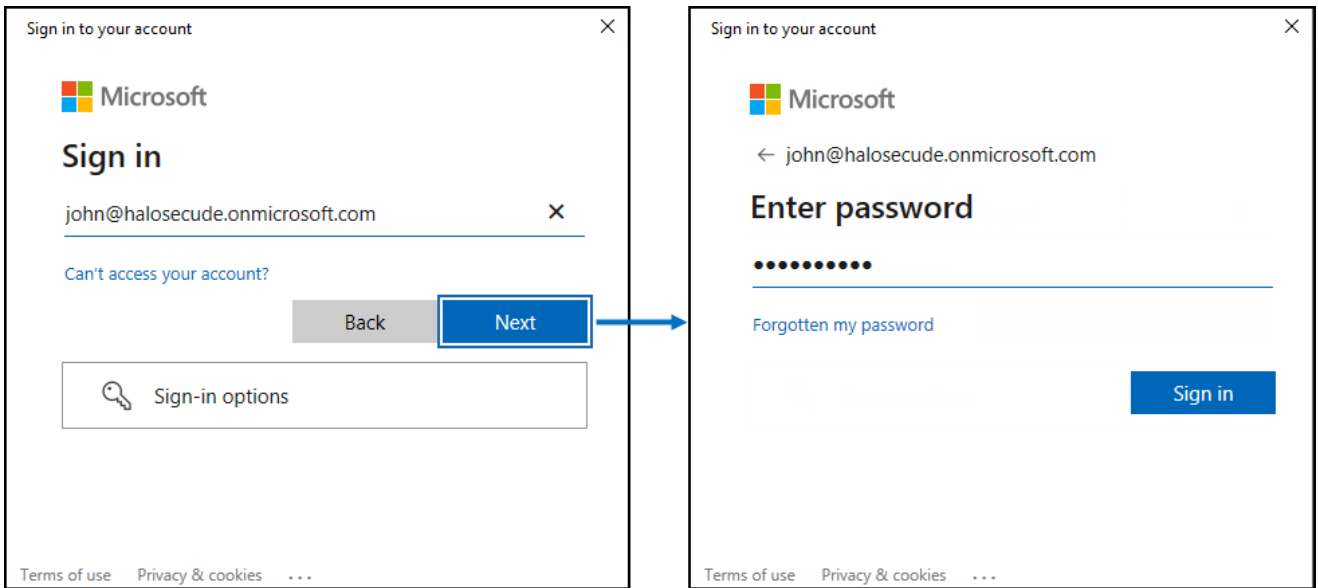
3. Click **OK**.
4. Open a HaloCAD-protected file via **File > Open**. The first time you log into a HaloCAD session, you will need to connect to Azure RMS. As a result, the HaloCAD Microsoft Sign-In window prompts you to enter your login credentials to start a new session.



*Microsoft Sign-In Assistant invoking message*

5. Click **OK**. Enter your credentials.

## Secude



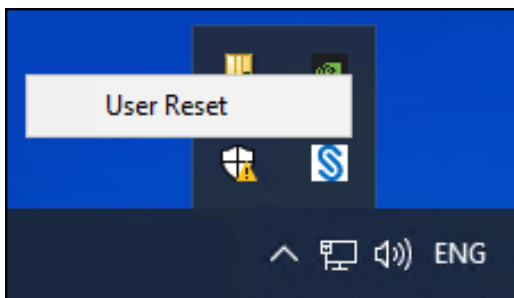
*Authentication sign-in prompt*

6. Upon successful verification, a connection is established with the Microsoft Entra tenant used during the initialization process.

**Result:** A view-only version of the file will open.

### User Reset

The login credentials are stored in a cache after a user logs into the HaloCAD session, making it easier to access Azure RMS. A user may want to clear the cached credentials for many reasons. To accomplish this, select **show hidden icons** from the taskbar, then right-click on the **Secude** icon and choose **User Reset**.



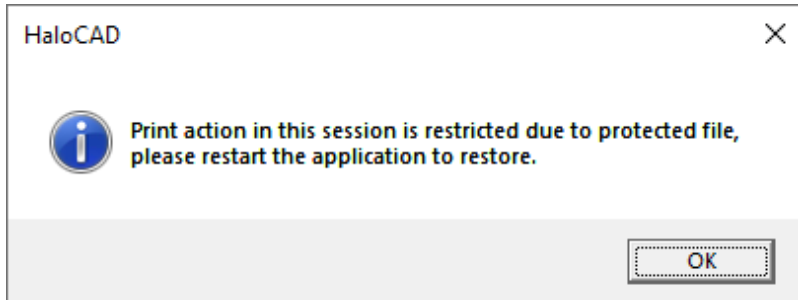
*User Reset button*

### 8.2.1. What Happens if You Try to Copy Data or Print Screen?

The most common way to sneak sensitive information out is by copying it (Ctrl + C) and taking a screenshot by Print Screen (PrtScn) or by using the snipping tool. The moment a viewer application is launched, HaloCAD for Viewers is invoked automatically and starts preserving the attributes of both unprotected and protected files. This protection ensures that any attempt to take a screenshot or copy content results in the displayed data being blanked out.

### 8.2.2. What Happens if You Try to Export or Print?

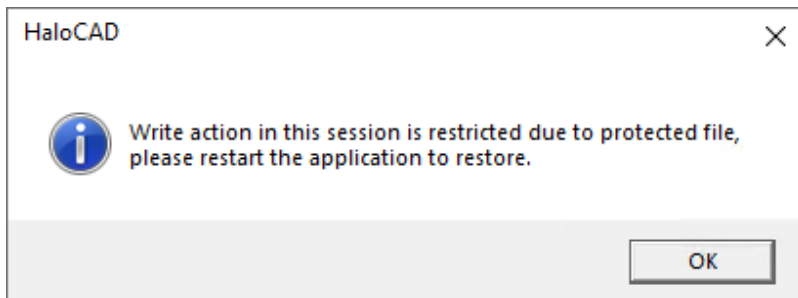
With "View-only" rights, you can only view the content, and other options are restricted, such as printing. So, when attempting to export via **Print > Microsoft Print to PDF**, you will receive the following warning message:



*Warning message for the print action*

### 8.2.3. What Happens if You Try to Write or Send the File via Email?

With "View-only" rights, you can only view the content, and other options are restricted, such as Email, Edit, Save, and Save As. So, trying to edit a file of any kind or mail a file via **File > Send > Email** will result in the following warning message:



*Warning message for the write or email action*

#### **Warning message in an unprotected file**

You will receive the same warning message while exporting/editing/emailing with an unprotected file if a protected file is already opened in the same session. Here, you need to restart the application and try again.

It is designed in such a way that when opening a protected file, HaloCAD for Viewers does not allow exporting / editing / emailing data, even from an unprotected file. Therefore, please edit a file before opening a HaloCAD-protected file in a HaloCAD session.

## 9. Customer Support

Please be ready with the information listed below before contacting our team to help you with the issue you are experiencing. The data that you provide will help us serve you better.

1. Full contact details.
2. HaloCAD Add-on build version.
3. Date, time, and description of the error (if possible, provide screenshots).
4. What (if any) third-party products (software or other) were used in conjunction with our product?
5. Any other information necessary to reproduce the error.

### Secude offers help and support through

1. Technical support email: [support@secude.com](mailto:support@secude.com)

If you choose to contact us by email, please provide your company details and a detailed description of the issue, as well as the log file (if any). Our representative will respond to your email inquiry.

2. Phone support: Call +41 41 510 70 70 to talk to our representative to diagnose and resolve the technical problem.

### Other resources

Please visit <https://secude.com> to know about upcoming events, press releases, and to download whitepapers.

## 10. Documentation Feedback

Secude understands the importance of technical content when attempting to gain product knowledge and strives to continuously improve product documentation to ensure that users receive the information they want. To provide feedback on the documentation, please send an email to [documentation@secude.com](mailto:documentation@secude.com). Please include the following details in your feedback:

1. Product name and version
2. Documentation topic
3. Details of the suggestion or error

The technical documentation team will consider your feedback and address it in future documentation updates.

# 11. Appendix

This section provides supplemental information.

## 11.1. Enable Support for TLS 1.2 at the Client Workstation for Microsoft Entra ID

To improve the security posture of the tenant and to remain in compliance with industry standards, Microsoft Entra ID stopped supporting the following Transport Layer Security (TLS) protocols and ciphers:

1. TLS 1.1
2. TLS 1.0
3. 3DES cipher suite (TLS\_RSA\_WITH\_3DES\_EDE\_CBC\_SHA)

In order for the HaloCAD for CAD add-on to be able to authenticate to Microsoft Entra ID, TLS 1.2 must be activated on the respective client workstation. Please see this [Microsoft article to enable TLS 1.2](#).

### Microsoft documentation

The information in the Microsoft documentation overrides any information published in this section.

Secude is not liable for changes to the content of this section because it was extracted from the Microsoft article at the time when the HaloCAD manual was prepared. Do check the most recent updates in this regard from the Microsoft documentation.

In summary, the following steps must be performed:

1. Update the Windows Operating System
2. Update .NET Framework
3. Set the following registry settings:

S.No	Windows Registry	Values
1	[HKEY_LOCAL_MACHINE\SOFTWARE\WOW6432Node\Microsoft\.NETFramework\v4.0.30319]	"SystemDefaultTlsVersions"=dword:00000001 "SchUseStrongCrypto"=dword:00000001
2	[HKEY_LOCAL_MACHINE\SOFTWARE\Microsoft\.NETFramework\v4.0.30319]	"SystemDefaultTlsVersions"=dword:00000001 "SchUseStrongCrypto"=dword:00000001

*Registry entries*

## 11.2. Third-Party Libraries

Third-party software/code is included or bundled with Secude's products according to its appropriate license. Secude conducts testing to make sure the third-party products are compatible with and perform as intended with Secude applications.

The third-party libraries and dependencies used by HaloCAD for Viewers are shown in the table below.

Library	Version	Source Code	License Link
Mhook	2.5.1	<a href="https://github.com/apriorit/mhook">https://github.com/apriorit/mhook</a>	<a href="https://github.com/apriorit/mhook#license">https://github.com/apriorit/mhook#license</a>
Boost	1.75.0	-	-
Protobuf Library	3.15.6	<a href="https://github.com/protocolbuffers/protobuf">https://github.com/protocolbuffers/protobuf</a>	<a href="https://github.com/protocolbuffers/protobuf/blob/master/LICENSE">https://github.com/protocolbuffers/protobuf/blob/master/LICENSE</a>
OpenSSL	3.4.1	<a href="https://github.com/openssl">https://github.com/openssl</a>	<a href="https://github.com/openssl/openssl/blob/master/LICENSE.txt">https://github.com/openssl/openssl/blob/master/LICENSE.txt</a>
Rapidxml	1.13	<a href="https://sourceforge.net/projects/rapidxml/files/latest/download">https://sourceforge.net/projects/rapidxml/files/latest/download</a>	<a href="http://rapidxml.sourceforge.net/license.txt">http://rapidxml.sourceforge.net/license.txt</a>
tbb	2021.6.0	<a href="https://github.com/oneapi-src/oneTBB">https://github.com/oneapi-src/oneTBB</a>	<a href="https://github.com/dwaddington/tbb-2018/blob/tbb_2018/LICENSE">https://github.com/dwaddington/tbb-2018/blob/tbb_2018/LICENSE</a>
MSAL	4.72.1	<a href="https://github.com/AzureAD/microsoft-authentication-library-for-dotnet">https://github.com/AzureAD/microsoft-authentication-library-for-dotnet</a>	<a href="https://github.com/AzureAD/microsoft-authentication-library-for-dotnet/blob/master/LICENSE">https://github.com/AzureAD/microsoft-authentication-library-for-dotnet/blob/master/LICENSE</a>
Confuser Ex	1.0.0.0	<a href="https://github.com/yck1509/ConfuserEx">https://github.com/yck1509/ConfuserEx</a>	<a href="https://github.com/yck1509/ConfuserEx/blob/master/LICENSE">https://github.com/yck1509/ConfuserEx/blob/master/LICENSE</a>
WTL	10.0.10320	<a href="https://www.nuget.org/packages/wtl/10.0.10320">https://www.nuget.org/packages/wtl/10.0.10320</a>	<a href="https://opensource.org/licenses/cpl1.0.txt">https://opensource.org/licenses/cpl1.0.txt</a>
MIP SDK	1.17.158	<a href="https://learn.microsoft.com/en-us/information-protection/develop/version-release-history">https://learn.microsoft.com/en-us/information-protection/develop/version-release-history</a>	<a href="https://docs.microsoft.com/en-us/information-protection/develop/">https://docs.microsoft.com/en-us/information-protection/develop/</a>

*Third-party libraries*

### 11.3. Uninstalling the HaloCAD for Viewers

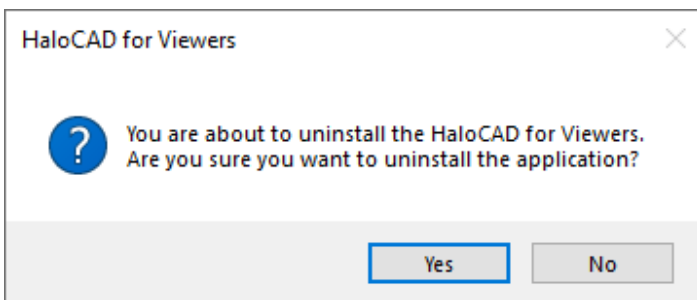
When you no longer use HaloCAD for Viewers, you may uninstall the application. Uninstalling removes all files and registry settings that were added to your computer during the initial installation.

#### Installer Version Requirement

When uninstalling the HaloCAD add-on, use the installer for the currently installed version, whether you run it by double-clicking or via the command line. Using a different installer version may cause errors.

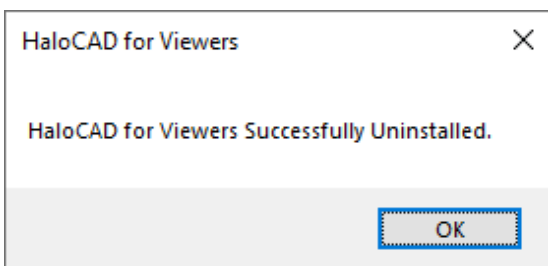
#### Method #1

1. Click **Start** menu > go to **Control Panel > Programs > Programs and Features > Uninstall a Program** > select **HaloCAD for Viewers** application from the list > right-click and select **Uninstall** option or double-click on the installer `HaloCAD_Viewers_Shield_Setup.exe` file.
2. Depending on your Windows security settings, you may get a security warning as "Do you want to allow the following program to make changes to this computer?". If you get this security warning, click the **Yes** button to confirm that you want to uninstall the add-on.
3. The HaloCAD installer first scans the current user session for any supported CAD Viewer applications running in the background. If it detects any, it displays a notification prompting you to close those applications before continuing with the uninstallation.
4. Click **OK** and close all HaloCAD-supported CAD Viewer applications.
5. Redo [step 1](#), and the following confirmation message appears.



*Uninstall Message #1*

6. Click **Yes** to confirm the uninstallation of HaloCAD from your computer.



*Uninstall Message #2*

7. The HaloCAD component has been successfully uninstalled. Click **OK** to close the dialog box.

### Method #2

The following is an example of uninstalling HaloCAD for Viewers using the command line.

1. Open a command prompt.
2. Navigate to the directory of the add-on installer.

**Example:** HaloCAD\_Viewers\_Shield\_Setup.exe -uninstall -silent true

3. The uninstalling process is complete.

# Index

<b>A</b>	
Application_id.....	1
Azure.....	1
<b>C</b>	
Cad-viewer.....	1
Cloud-type .....	1
<b>M</b>	
Microsoft_intra_id.....	1
Microsoft-entra-tenant.....	1
Mpip .....	1
<b>R</b>	
Redirect_uri.....	1
<b>S</b>	
Sccm .....	1
<b>T</b>	
Transport-layer-security.....	1



[www.secude.com](http://www.secude.com)

## About Secude

Secude, a trusted Microsoft and Siemens Digital Industries Software partner, is a global leader in Zero Trust data protection and data governance.

Our solutions extend Microsoft Purview Information Protection (MPIP) to secure sensitive files—including CAD and PLM assets—from the moment of creation. By embedding persistent protection and access controls directly into design and engineering data, we help enterprises prevent Intellectual Property (IP) theft, data leakage, reputational damage, and compliance risks. With operations in Europe, North America, and Asia, Secude supports global manufacturers, defense contractors, and AEC firms in implementing robust IT security strategies across the product lifecycle and digital supply chain.